

Suitability of a Novel Diet for a Parasitic Wasp, *Cotesia plutellae*

Author: Soyelu, Olalekan J.

Source: Journal of Insect Science, 13(86) : 1-11

Published By: Entomological Society of America

URL: <https://doi.org/10.1673/031.013.8601>

BioOne Complete (complete.BioOne.org) is a full-text database of 200 subscribed and open-access titles in the biological, ecological, and environmental sciences published by nonprofit societies, associations, museums, institutions, and presses.

Your use of this PDF, the BioOne Complete website, and all posted and associated content indicates your acceptance of BioOne's Terms of Use, available at www.bioone.org/terms-of-use.

Usage of BioOne Complete content is strictly limited to personal, educational, and non - commercial use. Commercial inquiries or rights and permissions requests should be directed to the individual publisher as copyright holder.

BioOne sees sustainable scholarly publishing as an inherently collaborative enterprise connecting authors, nonprofit publishers, academic institutions, research libraries, and research funders in the common goal of maximizing access to critical research.



Suitability of a novel diet for a parasitic wasp, *Cotesia plutellae*

Olalekan J. Soyelu^{1, 2}

¹Department of Zoology and Entomology, University of Fort Hare, Alice, South Africa

²Present address: Insect Physiology Laboratory, Department of Crop Production and Protection, Obafemi Awolowo University, Ile-Ife 220005, Osun State, Nigeria

Abstract

The braconid *Cotesia plutellae* (Kurdjumov) (Hymenoptera: Braconidae) is a major solitary, larval endoparasitoid of the diamondback moth, *Plutella xylostella* (L.) (Lepidoptera: Plutellidae). The impact of dietary protein was investigated in the laboratory by comparing performance of *C. plutellae* on honey, which is commonly used to rear the parasitoid, to that on a novel diet made of honey and protein-rich beebread. *Cotesia plutellae* was highly stimulated by honey and honey-beebread, with a feeding response exceeding 95%, a level that is comparable with its responses to fructose, glucose, and sucrose. The ability of honey-beebread to support host-parasitoid colonies was also comparable with that of honey. However, parasitoids raised on honey-beebread suppressed diamondback moths in rearing cages 3 weeks before the honey-fed wasps. The development time of *C. plutellae* reared on honey with or without beebread showed no significant difference, but adult wasps lived longer on honey-beebread. Mean developmental periods from oviposition to pupation and from pupation to adult emergence were 8 and 6 days, respectively. Adult wasps raised on honey-beebread outlived their conspecifics that were raised on honey by at least 4 days. Honey-beebread showed potential as a good food for rearing *C. plutellae* in the laboratory, and its benefit in parasitoid production is discussed.

Keywords: beebread, development time, feeding response, longevity, parasitism

Correspondence: jlekan2001@yahoo.co.uk

Received: 3 February 2012 **Accepted:** 16 April 2012

Copyright: This is an open access paper. We use the Creative Commons Attribution 3.0 license that permits unrestricted use, provided that the paper is properly attributed.

ISSN: 1536-2442 | Vol. 13, Number 86

Cite this paper as:

Soyelu OJ. 2013. Suitability of a novel diet for a parasitic wasp, *Cotesia plutellae*. *Journal of Insect Science* 13:86. Available online: <http://www.insectscience.org/13.86>

Introduction

The mass production of insects for biological control of pests has become a common technique for permanent establishment, periodic colonization, or inundative releases of agents (Etzel and Legner 1999). The importance of natural enemies, particularly parasitoids, as biological control agents has fostered dietetic studies for the development of artificial diets as a way to augment numbers and reduce production costs in mass rearing facilities (Li 1992; Cônsoli and Parra 1997, 1999). Artificial diets for insects have been developed to maximize insect growth and reproduction by meeting or surpassing their minimum nutritional requirements. There is a wide range of diets and published formulations. Insects thrive on ideal artificial diets, making it possible to economically raise hundreds of thousands of insects to release in fields for management of damaging crop pests.

Honey is the most common diet used in the laboratory for rearing *Cotesia plutellae* (Kurdjumov) (Hymenoptera: Braconidae), but being mostly sugars (95-99% per dry matter; FAO 1996) with trace amounts of vitamins or minerals, it is assumed to be inadequate for maximum performance in a synovigenic parasitoid. The present study aimed at improving the quality of honey without hampering the performance of *C. plutellae* by adding a protein source, namely beebread, to honey to form a paste (honey-beebread), which was then used to rear *C. plutellae* in the laboratory. Beebread is a stable yellowish-brown mixture of pollen and nectar collected by the honeybee, *Apis mellifera*, and stored in honeycombs. It is formed when collected pollen undergoes lactic acid fermentation, a process that improves nutritional value of pollen and renders the end product more

digestible (Loper et al. 1980). Unlike honey, beebread is rich in essential amino acids, carbohydrates, fatty acids, vitamins, minerals, trace elements, enzymes, and hormone precursors (FAO 1996).

Cotesia plutellae is the most common larval endoparasitoid attacking diamondback moth, *Plutella xylostella* (L.) (Lepidoptera: Plutellidae), in South Africa (Mosiane et al. 2003). It accounts for more than 80% of total parasitism on *P. xylostella* (Smith and Villet 2003), which is a destructive pest of cruciferous vegetables in many parts of the world. The parasitoid is synovigenic in nature (Soyelu 2010) and it always egresses from a still-living L4 (the final instar) of *P. xylostella* to pupate externally, irrespective of the host instar at oviposition (Shi et al. 2002). Synovigenic females emerge with a fraction of their total egg complement and they continue to mature eggs for some time or throughout their adult life (Jervis et al. 2001). Many synovigenic parasitoids feed on host body fluids in order to achieve maximal lifetime reproduction, a phenomenon termed 'host-feeding' (Heimpel and Collier 1996). By feeding upon hosts, females can gain nutrients such as proteins and vitamins, acquiring resources for producing eggs (Collier 1995). However, this feeding habit is destructive, as parasitized hosts, often in considerable proportion, are usually not suitable for offspring development. Host-feeding can also cause significant mortality in host populations, in some cases causing more host deaths than by parasitism (Kidd and Jervis 1989). Provision of a protein supplement to an artificial diet could, therefore, be important in the diet of *C. plutellae* to reduce the need for host body fluid as a protein source.

The goal of this study was to provide a dietary protein that is available to *C. plutellae* without

having adverse effects on *C. plutellae* feeding response, sustainability, reproduction, development, or longevity. It was hypothesized that an ideal protein additive to honey would enhance performance of *C. plutellae*. The study was divided into 3 parts. The first part assessed acceptability of the honey-beebread paste by comparing feeding response of *C. plutellae* to honey, honey-beebread, dilute sugar solutions, and sugar-deprived sources. The second part compared sustainability of *P. xylostella*-*C. plutellae* colonies on honey and honey-beebread. The third phase compared rate of development and longevity of *C. plutellae* on honey and honey-beebread.

Materials and Methods

Food and chemical reagents

Honey produced by *A. mellifera* from Karoo wildflowers was purchased from Speelmanskop Honey, Cradock, South Africa. Beebread was obtained from honeycombs donated by Makana Meadery (www.iqhilika.co.za). One part of the cake-like beebread was crushed in 3 parts of honey (w/w), resulting in the honey-beebread. The insects were able to utilize beebread in this state. The sources and purity of sugars used are presented in Table 1. Yeager's physiological salt had the following composition (g/L dH₂O): NaCl 10.93, KCl 1.57, CaCl₂ 0.85, MgCl₂ 0.17, and NaHCO₃ 0.17.

Experiment I: Feeding response

The method of Winkler et al. (2005) was used to test the feeding response of 2-day-old mated, unfed but water-satiated female *C. plutellae* to honey, honey-beebread, 1 M sugar solutions (fructose, glucose, sucrose, maltose, trehalose), physiological salt, and distilled water. To ensure water satiation at the time of the

experiment, wasps were provided with soaked cotton wool for a period of 30 min prior to the trials. Subsequently, each wasp was transferred to a separate, inverted, 6.0 cm × 2.5 cm (height × diameter) glass vial with a tiny drop of test food in it. As soon as the wasp's tendency to walk upwards had brought it in contact with the test material, its feeding response was recorded. The reaction was scored as acceptance (if feeding lasted more than 5 sec) or rejection (feeding for less than 5 sec). Observations were made for a maximum of 10 min for each wasp, beginning at the time the parasitoid first came in contact with the food. Durations of successful feeding bouts within the period were summed-up to assess relative acceptance time to each treatment. Each treatment was assessed using 30–41 female wasps, and each individual was tested once. Feeding outcome was expressed as percent positive response to each treatment. Replicated feeding duration was then subjected to one-way analysis of variance (Program GLM, SAS Institute 1999), and sample means were compared among treatments using Duncan's multiple range tests.

Experiment II: Host-parasitoid population dynamics in the laboratory

Larvae of *P. xylostella* and parasitoid cocoons were collected from cabbage fields in the vicinity of Alice (32° 46' S, 26° 50' E, 540 m a.s.l.), East Cape Province of South Africa, and emerging insects were used to establish standardized host-parasitoid colonies in December 2008. Colonies were established inside ten rearing cages (53 × 53 × 53 cm); 5 cages were provided with honey while the other 5 were supplied honey-beebread. Each cage was started with 40 second instar *P. xylostella* larvae, 6 newly emerged *C. plutellae* (2 females, 4 males), and 24 cabbage seedlings (4 × 6 plastic cups). The parasitoids were removed from cages after 4 days, and each

cage was supplied with 10 second instar larvae 13, 14, 19, and 20 days after cage establishment to serve as oviposition substrates for emerging parasitoids. Insect colonies were maintained in the laboratory at $25.1 \pm 0.7^\circ \text{C}$ (mean \pm SD), $49.3 \pm 8.3\%$ RH, and with a 15:9 L:D photcycle. Food was streaked thinly on the interior top surface of the cages, while water was provided through a wick of cotton wool in water-filled glass vials. Cabbage seedlings grown in a compost medium were regularly supplied in the rearing cages to serve as host plant food for larvae. Control cages were established for each treatment, where *P. xylostella* was reared without the parasitoid.

Weekly performance assessment of *C. plutellae* on each treatment commenced 4 weeks after cage establishment. The number of *P. xylostella* and *C. plutellae* present in each cage was counted every Monday between 10:00 and 11:00 from 12 January to 28 September 2009. Correlation analysis was carried out to determine relationships between the number of moths and *C. plutellae* on each diet (SAS Institute 1999). Student's *t*-test was used to test the null hypothesis that equal number of moths/wasps emerged in honey and honey-beebread cages (GenStat for Windows 2007).

Experiment III: Development and longevity

A sample of newly emerged parasitoids (< 24 hr) from parent insects that were fed honey or honey-beebread was used to set up 30 pairs (replicates) for each corresponding food treatment. Each pair (1 male and 1 female) was confined in a 24.5 cm \times 14.5 cm glass jar containing 2 or 3 cabbage seedlings infested with a batch of thirty second instar *P. xylostella* larvae. The *P. xylostella* larvae served as oviposition substrate for female parasitoids, and food (similar to that fed to parent wasps)

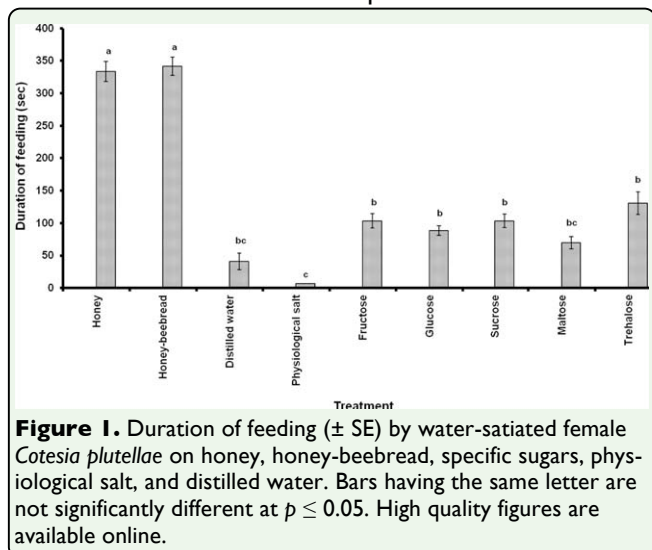
was provided to serve as a source of energy. Wasps were removed after 24 hr, and glass jars were examined on a daily basis for the presence of parasitoid cocoons. Cocoons collected were kept inside separate Petri dishes until parasitoid eclosion. Emerged parasitoids were maintained in separate jars and given food, similar to that fed to their parents, until death to assess longevity. The rate of development from egg to pupa was measured as the number of days from oviposition to cocoon appearance. The number of days from cocoon appearance to adult eclosion was also recorded for each wasp.

Longevity was also determined among freshly emerged wasps that were provided with water alone, physiological salt, and those that were left without any provision. Parasitoid development was compared between honey and honey-beebread only. Obtained data were analyzed using one-way analysis of variance (Program GLM, SAS Institute 1999) to determine diet effect on longevity. Sample means were then compared using Duncan's multiple range tests. The null hypotheses that rate of parasitoid development on honey was equal to that on honey-beebread, and that males do not outlive females, were tested using *t*-test procedure (GenStat for Windows 2007).

Results

Experiment I: Feeding response

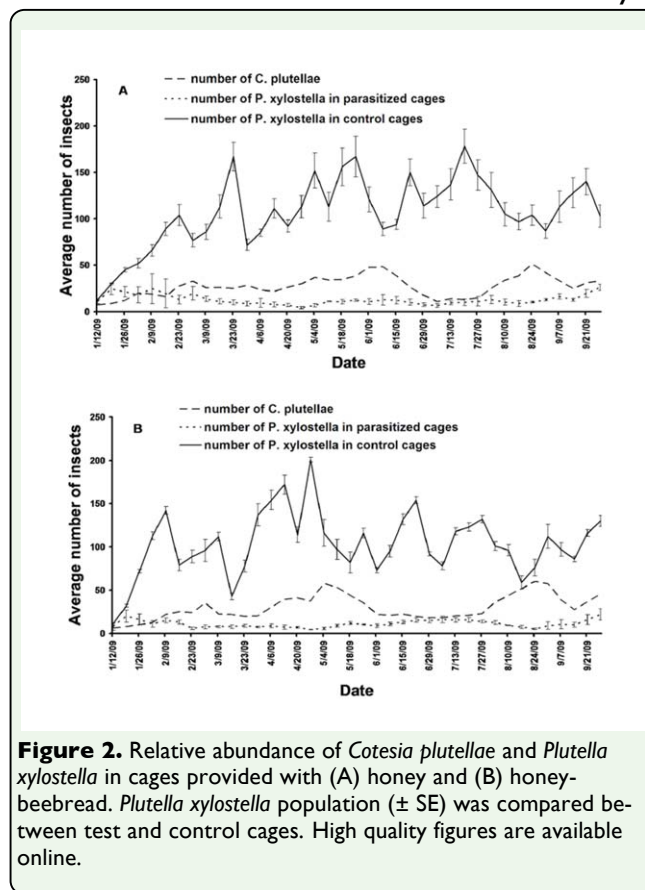
Honey, honey-beebread, sucrose, fructose, and glucose evoked > 90% feeding response, while maltose and trehalose elicited < 50% response in *C. plutellae*. The response to distilled water was < 10%, and physiological salt was the least stimulatory of the treatments, evoking an acceptance of < 5% (Table 2). In general, feeding occurred in discontinuous



bouts, and the total time spent by each wasp within the 10 min of observation was summed up. The wasps fed for < 10 sec on physiological salt and < 50 sec on distilled water. Feeding duration on specific sugars (maximum 130 sec) was significantly lower than time spent (maximum 330 sec) on honey and honey-beebread (Figure 1). With the exception of maltose, all sugars tested led to longer durations of feeding than did the distilled water control.

Experiment II: Host-parasitoid population dynamics in the laboratory

The first set of *C. plutellae* emerged in established cages 13 days after larvae were parasitized. Emerging wasps suppressed the *P. xylostella* population, and this became evident in honey-beebread cages 3 weeks (February 2) before the same effect was observed in those fed honey alone (February 23) (Figure 2). The number of moths in control cages was consistently higher than the number in parasitized cages. The host-parasitoid population varied with diet over the rearing period, and peak population of *C. plutellae* was usually followed by a sharp decline, after which the number increased again to reach another peak. There was a significant negative correlation between the number of moths and wasps that



emerged in honey-beebread cages ($c = -0.38$; $df = 37$; $p = 0.019$), while an insignificant relationship was observed in honey cages ($c = -0.15$; $df = 37$; $p = 0.376$). An equal number of *C. plutellae* emerged in honey and honey-beebread cages over the test period ($t = 1.67$; $df = 37$; $p = 0.102$), but the number of moths in honey cages was slightly higher than that in honey-beebread cages ($t = 2.19$; $df = 37$; $p = 0.035$).

Experiment III: Development and longevity

Development times of *C. plutellae* eggs and larvae (from oviposition to pupation) and pupae (from pupation to adult emergence) were not significantly different on honey and honey-beebread (eggs and larvae: $t = 1.30$; $df = 539$; $p = 0.19$; pupae: $t = 1.50$; $df = 479$; $p = 0.14$). Also, overall development times of *C. plutellae* from oviposition to adult emergence did not differ on the 2 diets ($t = 1.67$; $df = 475$; $p = 0.17$) (Table 3).

Adult male and female *C. plutellae* lived significantly longer on honey-beebread than they did on honey, whereas there was no significant difference between the lifespan of wasps that were not fed at all and those that were deprived of sugar sources (Table 4). Longevity of fed wasps was about ten-fold that of unfed conspecifics. Median longevity (day at which 50% of the initial number of wasps were still alive) was highest, and risk of starving to death was lowest, in wasps reared on honey-beebread. There was no sexual effect on longevity except among sugar-deprived wasps, where females lived significantly longer than males.

Discussion

A feeding response is elicited by stimulating gustatory chemoreceptors, which contain neurons that are specialized for either sugar, water, or salt (Nation 2008). In the present study, acceptance or rejection of a treatment was typically preceded by contact with mouthparts, suggesting a role of the mouth apparatus for sugar perception in parasitic Hymenoptera. However, involvement of taste receptors in other parts of the insect body cannot be ruled out. Honey and honey-beebread were highly stimulatory food sources, as were fructose, glucose, and sucrose. Maltose and trehalose could be categorized as moderately stimulatory sugars, while the physiological salt could be regarded as an antifeedant of *C. plutellae*. The poor acceptance of distilled water was due to the fact that wasps were water-satiated prior to the trials. The obtained results corroborate earlier ones, which showed that most hymenopterous parasitoids readily accept fructose, glucose, and sucrose, which are abundant in honey, nectar, and honeydew (Beach et al. 2003; Winkler et al. 2005). An excellent feeding re-

sponse to component sugars is imperative to successful utilization of a food source. Positive feeding response is a vital behavior in insect rearing, and a good fit between response and longevity has been shown for a number of insects (Irvin et al. 2007).

Feeding durations on honey and honey-beebread were longer than on sugar solutions, suggesting a reduced rate of fluid intake due to high viscosity (Wyckhuys et al. 2008). An exponential increase in viscosity is a major characteristic of increasing sugar concentration (Borrell 2006), a factor that affects the handling of food in insects (Heyneman 1983). Though a parasitoid is more satisfied the longer it feeds on a food source, the prolonged stay may be disadvantageous in the field, as a wasp spending a long time on a highly concentrated sugar source could be an easy target for predators (Morse 1986). It might also have a strong impact on daily time allocation of the wasp, as less time is devoted to host searching and egg laying activities. Application of diluted supplementary food spray, therefore, becomes pertinent in this respect, as a high amount of sugar can be consumed in a relatively short feeding time when diluted solutions are applied in the field (Siekman et al. 2001).

Honey-beebread sustained *P. xylostella*-*C. plutellae* colonies in the laboratory in a manner that is comparable with honey. However, wasps in honey-beebread cages attained adequate fitness faster than those in honey cages, and the numbers of diamondback moths were subdued much earlier in the former. This disparity could be due to quality of diet, as honey-beebread is more nutritious than honey. It is evident that pest population remained perpetually low in test cages, indicating that the parasitoid was successfully established in the 2 treatments. The negative

correlation between the number of diamondback moths and *C. plutellae* in test cages together with a consistently higher number of *P. xylostella* in control cages confirmed that reduction in pest population was due to parasitism.

The sharp decline in the number of *C. plutellae* after each peak population and the subsequent increase could be attributed to the phenomenon of density-dependent parasitism. Mortality factors, such as parasitism, acting on an insect population can cause 3 possible dynamic changes. They can: (i) affect the average population density, (ii) induce fluctuations in numbers, and (iii) contribute to the regulation of population numbers (Kidd and Jervis 2007). For a factor to regulate, the strength of its action must be dependent on the density of the population affected. Thus, its proportional effect has to be greater at high population densities and smaller at low densities. Given that the parasitoid needs its host to multiply, it would be disadvantageous to the parasitoid to eradicate the host in its entirety. In the present study, *C. plutellae* attacked more larvae at high larval densities, and when the larval population was depleted, the parasitoid reduced the rate of parasitism. This reduction allowed diamondback moth larvae to increase in number, accompanied by an increase in rate of parasitism, until the peak attack was attained and the process of number regulation re-started. The emergence of wasps from eggs laid at high larval densities gave rise to the peaks (Figure 2), which were followed by the sharp descent recorded for fewer wasps that emerged from a reduced number of eggs laid at low larval densities. It could, therefore, be said that this regulatory activity of the parasitoid partly kept colonies alive in the laboratory.

The development time of *C. plutellae* did not vary with or without protein supplement in the diets. It took an average of 8 days from oviposition to pupation, and an additional 6 days before adults eclosed on both diets. The average development time of *C. plutellae* from oviposition to adult emergence was, therefore, about 14 days. The life span of an individual insect can be divided into 2 phases: (i) the development from hatching of the egg until adult eclosion, and (ii) the period of adult life, usually referred to as longevity (Blackburn 1991). The subject of longevity is crucial to the success of biological control because (a) the longer a male can live, the more females he can inseminate, and therefore the more eggs he can fertilize; and (b) the longer a female can live, the more eggs she will lay (Roitberg et al. 2001; Rivero and West 2002). The results of our study showed that sugar-satiated wasps lived significantly longer than their sugar-deprived cohorts. This observation is in agreement with Onagbola et al. (2007), who noted a significant reduction in longevity of unfed wasps. Starved wasps lived for just 2 days, suggesting that resources acquired during immature development were rapidly exhausted for somatic maintenance. On average, food availability increased parasitoid longevity by a factor of 10 relative to wasps that were not fed at all. However, *C. plutellae* lived longer on honey-beebread than it did on honey, while physiological salt appeared to be the most unsuitable food for this parasitoid. Since beebread is very rich in essential amino acids, it is reasonable to suggest that the presence of amino acids led to the longer life span recorded for the *C. plutellae* that were raised on honey-beebread. Rojas et al. (1995) observed an increase in longevity of *Bracon thurberiphagae* reared on *Heliothis virescens* when the adult diet (30% solution of 50:50 glucose:fructose) was fortified with several amino acids. Provision of protein sources as

supplemental food could be the key to improving mass rearing efficiency of *C. plutellae*. In the field, where hosts are presumably more difficult to find and the rate of parasitoid oviposition may, therefore, be lower, it seems likely that longevity would have a stronger influence on parasitoid fitness.

General life history models predict that age at maturity and adult lifespan should be positively correlated (Stearns 1992), but studies have shown that hymenopteran parasitoids are an exception. In the present study, diet affected longevity, but it did not influence development time. Eijs and van Alphen (1999) and Seyahooei et al. (2011) observed no correlation between development time and adult lifespan among 5 species of the parasitoid genera *Leptopilina* and *Asobara*. Specifically, the latter reported that the shortest-lived species, *Asobara japonica*, had a development time that was longer than that of *A. pleuralis* which, on the contrary, had an adult lifespan that was about 4 times longer. Laboratory bioassays also showed a negative relationship between longevity and metabolic rate in *Asobara*. It was, therefore, concluded that lifespan and development time in parasitoids are genetically and physiologically uncoupled. This allows adult lifespan to evolve independently from development rate. It was suggested that metabolic rate and the ability to use adult food could determine adult lifespan but not development time.

In conclusion, these results showed that honey-beebread is a suitable supplementary food that could be used in place of pure honey for rearing *C. plutellae*. The excellent feeding response elicited by this diet is an indication that the addition of beebread to honey did not affect attraction to the food. The physiological salt caused a drastic reduction in feeding response of *C. plutellae*, indicating a need for

caution when formulating artificial diets for this parasitoid. The suitability of honey-beebread for rearing *C. plutellae* in the laboratory has the potential to greatly expand the use of biological control agents in agriculture while reducing dependence on chemical products.

Acknowledgements

The author is grateful to Govan Mbeki Research and Development Centre, University of Fort Hare, Alice, South Africa, for supporting this research. Dr. Garth Cambray (co-founder, Makana Meadery, Grahamstown) is also appreciated for donating the beebread.

References

- Beach JP, Williams III L, Hendrix DL, Price LD. 2003. Different food sources affect the gustatory response of *Anaphes iole*, an egg parasitoid of *Lygus* spp. *Journal of Chemical Ecology* 29: 1203–1222.
- Blackburn TM. 1991. Evidence for a 'fast-slow' continuum of life-history traits among parasitoid hymenoptera. *Functional Ecology* 5: 65–74.
- Borrell BJ. 2006. Mechanics of nectar feeding in the orchid bee *Euglossa imperialis*: pressure, viscosity and flow. *The Journal of Experimental Biology* 209: 4901–4907.
- Collier TR. 1995. Host-feeding, egg maturation, resorption and longevity in the parasitoid *Aphytis melinus* (Hymenoptera: Aphelinidae). *Annals of the Entomological Society of America* 88: 206–214.
- Cônsoli FL, Parra JRP. 1997. Development of an oligidic diet for *in vitro* rearing of *Trichogramma galloi* Zucchi and

Trichogramma pretiosum Riley. *Biological Control* 8: 172–176.

Cônsoli FL, Parra JRP. 1999. *In vitro* rearing of parasitoids: constraints and perspectives. *Trends in Entomology* 2: 19–32.

Eijs IEM, van Alphen JJM. 1999. Life history correlations: why are hymenopteran parasitoids an exception? *Ecology Letters* 2: 27–35.

Etzel LK, Legner EF. 1999. Culture and colonization. In: Bellows TS, Fisher TW, Editors. *Handbook of Biological Control*. pp. 125–197. Academic Press.

FAO. 1996. Value-added products from bee-keeping. *FAO Agricultural Services Bulletin No. 124*.

GenStat 2007. *The GenStat Discovery Edition 3*. VSN International.

Heimpel GE, Collier TR. 1996. The evolution of host-feeding behaviour in insect parasitoids. *Biological Reviews* 71: 373–400.

Heyneman AJ. 1983. Optimal sugar concentrations of floral nectars: dependence on sugar intake efficiency and foraging costs. *Oecologia* 60: 198–213.

Irvin NA, Hoddle MS, Castle SJ. 2007. The effect of resource provisioning and sugar composition of foods on longevity of three *Gonatocerus* spp., egg parasitoids of *Homalodisca vitripennis*. *Biological Control* 40: 69–79.

Jervis MA, Heimpel GE, Ferns PN, Harvey JA, Kidd NAC. 2001. Life-history strategies in parasitoid wasps: a comparative analysis of

‘ovigeny’. *Journal of Animal Ecology* 70: 442–458.

Kidd NAC, Jervis MA. 1989. The effects of host-feeding behaviour on the dynamics of parasitoid-host interactions, and the implications for biological control. *Researches in Population Ecology* 31: 235–274.

Kidd NAC, Jervis MA. 2007. Population dynamics. In: Jervis MA, Editor. *Insects as natural enemies: a practical perspective*. pp. 435–523. Springer.

Li L. 1992. *In vitro* rearing of parasitoids of insect pests in China. *Korean Journal of Applied Entomology* 31: 241–246.

Loper GM, Standifer LN, Thompson MJ, Gilliam M. 1980. Biochemistry and microbiology of bee collected almond (*Prunus dulcis*) pollen and beebread. I. Fatty acids, sterols, vitamins, and minerals. *Apidologie* 11: 63–73.

Morse DH. 1986. Predatory risk to insects foraging at flowers. *Oikos* 46: 223–228.

Mosiane MS, Kfir R, Villet MH. 2003. Seasonal phenology of the diamondback moth, *Plutella xylostella* (L.) (Lepidoptera: Plutellidae), and its parasitoids on canola, *Brassica napus* (L.), in Gauteng Province, South Africa. *African Entomology* 11: 277–285.

Nation JL. 2008. *Insect Physiology and Biochemistry*, 2nd Edition. CRC Press.

Onagbola EO, Fadamiro HY, Mbata GN. 2007. Longevity, fecundity, and progeny sex ratio of *Pteromalus cerealellae* in relation to diet, host provision, and mating. *Biological Control* 40: 222–229.

Rivero A, West SA. 2002. The physiological costs of being small in a parasitic wasp. *Evolutionary Ecology Research* 4: 407–420.

Roitberg BD, Boivin G, Vet LEM. 2001. Fitness, parasitoids, and biological control: an opinion. *The Canadian Entomologist* 133: 429–438.

Rojas MG, Vinson SB, Williams HJ. 1995. Supplemental feeding increases the utilization of a factitious host for rearing *Bracon thurberiphagae* Muesebeck (Hymenoptera: Braconidae) a parasitoid of *Anthonomus grandis* Boheman (Coleoptera: Curculionidae). *Biological Control* 5: 591–597.

SAS Institute. 1999. *SAS/STAT User's Guide*, version 8. SAS Institute.

Seyahooei MA, van Alphen JJM, Kraaijeveld K. 2011. Metabolic rate affects adult life span independently of developmental rate in parasitoid wasps. *Biological Journal of the Linnean Society* 103:45–56.

Shi ZH, Liu SS, Li YX. 2002. *Cotesia plutellae* parasitizing *Plutella xylostella*: host-age dependent parasitism and its effect on host development and food consumption. *BioControl* 47: 499–511.

Siekmann G, Tenhumberg B, Keller MA. 2001. Feeding and survival in parasitic wasps: sugar concentration and timing matter. *Oikos* 95: 425–430.

Smith TJ, Villet MH. 2003. Parasitoids associated with the diamondback moth, *Plutella xylostella* (L.), in the Eastern Cape, South Africa. *Proceedings of the Fourth International Workshop on The Management of Diamondback moth and other crucifer pests*.

Soyelu OJ. 2010. *Effect of nutrition on Cotesia plutellae (Hymenoptera: Braconidae) and its parasitism on the diamondback moth, Plutella xylostella (Lepidoptera: Plutellidae)*. PhD Dissertation, University of Fort Hare, Alice, South Africa.

Stearns SC. 1992. *The Evolution of Life Histories*. Oxford University Press.

Winkler K, Wäckers FL, Stingli A, van Lenteren JC. 2005. *Plutella xylostella* (diamondback moth) and its parasitoid *Dia-degma semiclausum* show different gustatory and longevity responses to a range of nectar and honeydew sugars. *Entomologia Experimentalis et Applicata* 115: 187–192.

Wyckhuys KAG, Strange-George JE, Kulhanek CA, Wäckers FL, Heimpel GE. 2008. Sugar feeding by the aphid parasitoid *Binodoxys communis*: how does honeydew compare with other sugar sources? *Journal of Insect Physiology* 54: 481–491.

Table 1. Sources and purity of sugars used in the feeding experiment.

Specific sugar	Bond linkage	Source	Purity (%)
Monosaccharide			
D-(+)-Glucose		Minema	> 99
D-(-)-Fructose		Saarchem	> 99
Disaccharide			
D-(+)-Maltose monohydrate	α -D-glucopyranosyl-(1 \rightarrow 4)-D-glucose	Sigma	> 98
D-(+)-Sucrose	β -D-fructofuranosyl-(2 \leftrightarrow 1)- α -D-glucopyranoside	Fluka	> 99
D-(+)-Trehalose	α -D-glucopyranosyl-(1 \leftrightarrow 1)- α -D-glucopyranoside	BDH	> 98

Table 2. Feeding response of water-satiated *Cotesia plutellae* to honey, honey-beebread, physiological salt, and specific sugars compared to distilled water during 10 min observation periods.

Treatment	Number of wasps tested	Number of wasps that fed	Percent positive response
Honey	33	32	96.97
Honey-beebread	41	39	95.12
Physiological salt	32	1	3.13
Fructose	31	30	96.77
Glucose	30	29	96.67
Sucrose	31	29	93.55
Maltose	30	14	46.67
Trehalose	30	11	36.67
Distilled water	32	3	9.38

Table 3. Development time of *Cotesia plutellae* reared on honey and honey-beebread.

Diet	Days \pm SD		
	Egg to pupa	Pupa to adult emergence	Egg to adult emergence
Honey	7.67 \pm 0.80	5.86 \pm 0.57	13.52 \pm 0.81
Honey-beebread	7.76 \pm 0.77	5.95 \pm 0.67	13.57 \pm 0.75

Table 4. Indices of adult *Cotesia plutellae* longevity on 5 nutritional treatments. Values in the same column followed by the same letter are not significantly different at $p \leq 0.05$.

Treatment	Days \pm SD		<i>t</i> -test for male vs. female longevity (n = 58)	Median longevity (days)		Relative death rate (log rank test)	
	Male	Female		Male	Female	Male	Female
	Honey	13.37 \pm 5.18b		12.4 \pm 5.06b	$t = 0.73, p = 0.468$	13	13
Honey-beebread	19.40 \pm 9.11a	16.07 \pm 8.38a	$t = 1.47, p = 0.146$	18	14	0.47	0.5
Physiological salt	2.13 \pm 0.35c	2.43 \pm 0.50c	$t = 2.69, p = 0.010$	2	2	2.42	2.48
Distilled water	2.63 \pm 0.81c	3.13 \pm 0.73c	$t = 2.51, p = 0.015$	2	3	1.92	1.66
No food	2.57 \pm 0.50c	2.60 \pm 0.50c	$t = 0.26, p = 0.798$	3	3	1.84	2.14