

Ultrastructure of the Antennal Sensillae of Male and Female Peach Fruit Fly, *Bactrocera zonata*

Authors: Awad, Azza A., Ali, Nashat A., and Mohamed, Hend O.

Source: Journal of Insect Science, 14(45) : 1-15

Published By: Entomological Society of America

URL: <https://doi.org/10.1673/031.014.45>

BioOne Complete (complete.BioOne.org) is a full-text database of 200 subscribed and open-access titles in the biological, ecological, and environmental sciences published by nonprofit societies, associations, museums, institutions, and presses.

Your use of this PDF, the BioOne Complete website, and all posted and associated content indicates your acceptance of BioOne's Terms of Use, available at www.bioone.org/terms-of-use.

Usage of BioOne Complete content is strictly limited to personal, educational, and non - commercial use. Commercial inquiries or rights and permissions requests should be directed to the individual publisher as copyright holder.

BioOne sees sustainable scholarly publishing as an inherently collaborative enterprise connecting authors, nonprofit publishers, academic institutions, research libraries, and research funders in the common goal of maximizing access to critical research.



Ultrastructure of the antennal sensillae of male and female peach fruit fly, *Bactrocera zonata*

Azza A. Awad^{1a}, Nashat A. Ali², Hend O. Mohamed²

¹Zoology Department, Faculty of Science, Assiut University, Egypt

²Plant Protection Res. Institute, Agricultural Research Center, Giza, Egypt

Abstract

Antennal morphology and funicular sensillae of male and female peach fruit flies, *Bactrocera zonata* (Saunders) (Diptera: Tephritidae), were studied with scanning electron microscopy (SEM). This study focused on the sensillae found on the antennal segments (scape, pedicel, and flagellum or funiculus that bears the arista) of *B. zonata*. Antennal segments of females tended to be larger than those of the males. The first two antennal segments, scape and pedicel, were heavily covered with microtrichia and bear bristles. Numerous microtrichia as well as trichoid (I, II), basiconic, clavate, and coeloconic sensillae were observed on the funiculus. SEM studies showed some differences in size and also in position of some sensillae on the antennae of the females of *B. zonata*. The sensillae found on the funiculus, such as trichoid and basiconic sensillae, were significantly larger in females.

Keywords: antennae, funicular sensilla, scanning electron microscopy

Correspondence: ^a awadazza@yahoo.com

Received: 23 June 2012 **Accepted:** 19 December 2012 **Published:** 23 March 2014

Editor: Henry Hagedorn was editor of this paper.

Copyright: This is an open access paper. We use the Creative Commons Attribution 3.0 license that permits unrestricted use, provided that the paper is properly attributed.

ISSN: 1536-2442 | Vol. 14, Number 45

Cite this paper as:

Awad AA, Ali NA, Mohamed HO. 2014. Ultrastructure of the antennal sensillae of male and female peach fruit fly, *Bactrocera zonata*. *Journal of Insect Science* 14:45. Available online: <http://www.insectscience.org/14.45>

Introduction

The peach fruit fly, *Bactrocera zonata* (Saunders) (Diptera: Tephritidae), is considered one of the most destructive fruit pests in several regions of the world (Drew 1989). It has been recorded on more than 50 cultivated and wild plant species (Kapoor and Agarwal 1982; White and Elson-Harris 1992; EPPO 2003). It attacks ripe fruits and inflicts damage to the fruits directly (through oviposition punctures and subsequent larval feeding on pulp) or by creating blemishes on fruits, which limit marketing possibilities (especially export of fruits) (Aluja et al. 1996; EPPO 2003). The infestation may reach up to 50% in summer crop of guava in Pakistan. The fruit attacked by this pest become malformed, misshaped, undersized, and rotted inside (Atwal 1976).

Antennae of insects play great roles in their chemical communication, host preference, and chemoreception of sex pheromones, which are of primary importance in pest management strategy. Insect's antennae have various types of sensilla with different functions that play important roles in various behaviors during adult life. Antennal sensillae are important sensory receptors used in host location and discrimination behaviors (Schneider 1964; Ochieng et al. 2000). The antenna is the major channel of sensory input, including receptors for volatile odors and pheromones, contact chemoreception, water vapor, carbon dioxide, sound perception, and touch (Ehmer and Gronenberg 1997; Renthal et al. 2003). The feeding and reproductive behavior in tephritid fruit flies depends greatly on the chemical stimuli they receive and process (e.g., pheromones and plant volatiles, such as methyl eugenol). The primary structures involved in the initial reception of semiochemical information are the antennal chemoreceptors (Rice 1989; Keil 1999). Therefore, in order to

achieve successful control of agricultural pests using synthetic sex pheromones, it is essential to have a better understanding of the peripheral sensory structure involved in the perception of pheromones, the antenna being the primary sensory structure.

The antennal morphology and types of sensilla have been described for several tephritid species of economic importance. Among these are *Bactrocera (Dacus) oleae* Gmelin (Hallberg et al. 1984); *Bactrocera (Dacus) tryoni* Froggatt (Gianakakis and Fletcher 1985; Hull and Cribb 1997); *Ceratitis capitata* Wiedemann (Levinson et al. 1987; Mayo et al. 1987; Dickens et al. 1988; Bigiani et al. 1989); *Anastrepha ludens* Loew, *Bactrocera (Dacus) cucurbitae* Coquillett, *Bactrocera (Dacus) dorsalis* Hendel (Dickens et al. 1988), *Eurosta solidaginis* Fitch (Vasey and Ritter 1987), *Anastrepha serpentine* Wiedemann (Castrejón-Gomé 2006), and *Bactrocera tau* Walker, *Bactrocera cucurbitae* Coquillett, *Bactrocera minax* Enderlein, *Bactrocera diaphora* Hendel, and *Bactrocera scutellata* Hendel (Hu et al. 2010). However, very little is known about *B. zonata*.

According to the various types of insect's sensilla, their positions, and functions, one can differentiate between the different species or even between morphs of the same species (dimorphism). Generally, sensillae are considered as the main communication system in insects, and with them individuals locate their partners and host plants. According to their functions, the antennal sensillae may be divided into chemoreceptors, mechanoreceptors, and thermo-/hygroreceptors (Zacharuk 1985; Clements 1999). Moreover, sensilla can play an important role in insect control (biological or chemical control). Therefore, the studying of chemoreceptor sensilla can be used in control by using insecticides that block the

function of these sensilla. The aim of this paper is to investigate the antennal sensory structures of peach fruit fly (*B. zonata*), with the goal of identifying and characterizing sensillae types involved in chemoreception. We present here the first examination of the morphology, abundance, and distribution of antennal sensillae in both male and female *B. zonata*. It is anticipated that this study will facilitate future research on the electrophysiology and neurobiology of olfaction in peach fruit flies.

Materials and Methods

Collection and rearing the flies

Larvae of *B. zonata* were obtained from infested mango fruit (*Mangifera indica* L. (Sapindales: Anacardiaceae)), which were collected from the field and placed in plastic plates containing sand at the bottom. The jumping larvae, which pupated in the sand, were collected and transferred to adult rearing cages until adult emergence. The newly emerged flies were separated by sex, provided with adult food consisting of sugar mixed with hydrolyzate protein (yeast) at a ratio of 3:1 by weight, and then introduced to the microscopy studies.

Scanning electron microscopy

Both male and female adult flies (seven days old) were picked to be examined for ultrastructure and morphological characters by scanning electron microscopy (SEM). Scanning electron microscopy was performed as described by Azza (1999). The four following steps were performed:

1) Fixation. Two fixation techniques were used: (1) glutaraldehyde + osmium tetroxide fixation (using critical point drying). This first fixation was by using GTA technique, but it was not the proper fixative for that specimen.

(2) Khal's solution fixation (using freeze-drying). In this study Khal's solution was used as a fixative and it was prepared as follows: 30 mL 95% EtOH + 12 mL formaldehyde + 4 mL glacial acetic acid + 60 mL distilled water. Specimens were ready for fixation directly after mixing these components. Fixation by Khal's solution lasted 7–8 days.

2) Dehydration. After fixation, the fixative was washed by three washes in the same buffer vehicle as used for the fixative. Ethanol is the most widely used dehydration agent. After secondary fixation, specimens were left in a series of ascending alcohols (30% for 2 hr, 50% for 2 hr, 70% for 2 hr, 90% with two changes for 2 hr, and 100% with three or four changes for 2 hr) in order to eliminate the small amount of water remaining in the tissue. Then excess alcohol was drained off, and specimens were put in amylacetat for 1–2 days.

3) Drying. Because of their hard outer shell, the specimens were air-dried.

4) Final mounting. After a specimen was dried, it was mounted on an SEM holder called a specimen stub. The surface of the stub was as smooth and free of structure as possible in order to prevent confusing backgrounds with sticky-taps (adhesive). The specimen was then carefully placed onto the adhesive, and clean air was used to press it into the adhesive. The specimen holder was labeled from the underside with a permanent marker pen and stored until was needed for sputter coating. The specimen was then coated with gold film with 150 Å thickness using an JFC-1100E sputtering device (JEOL, www.jeol.com) for 2–3 minutes. The specimen was examined using a JEOL 5400LV scanning electron microscope. Identification

of sensilla was carried out according to Snodgrass (1944) and Zacharuk (1985).

Statistical Analysis

Sensilla on the dorsal surfaces of the antennae of *B. zonata* were identified and measured. Measurements (μm) obtained from photomicrographs of at least 10 individual sensilla of the same type were used to calculate the means. Data obtained on the different segments of the antenna on male and female *B. zonata* were analyzed using a *t*-test with SPSS 12.0 for Windows (IBM, www.ibm.com) to determine any significant differences (*P* < 0.05).

Results

Morphology of the fly antennae

The antennae of peach fruit fly, *B. zonata*, are situated in a frontal depression between com-

pound eyes (the antennal fossa). The antenna is composed of three segments, the scape, pedicel, and funiculus. The scape (short basal segment, semicircle shape) attaches to the pedicel and is movable with it to allow the movement of antenna. Both the scape and the pedicel are heavily covered with microtrichia and bear bristles. The funiculus (third antennal segment) is unsegmented flagellum, while the arista was found on the dorso-proximal end of the funiculus (Figure 1A, B). The total length of the antenna and the length of each segment are shown in Table 1. The antennal segments of females (~1000 μm) tended to be larger than those of males (~846.15 μm)

A) The scape (Sc; basal antennal segment). The scape is a very narrow area that attaches the antennae to the head capsule. It is reinforced by some bristles and carries the following sensilla (Table 2, Figure 2A, B):

- 1) Trichoid sensilla (TrI, II): Scattered over the surface area of the scape in both sexes, but in males more densely distributed than in of females.
- 2) Basiconica sensilla (BSII): Scattered over the surface area in both sexes, with a swollen base and short neck shaft. More densely distributed in females than in males.
- 3) Cheatica sensilla (Ch): One row of bristle-like structure, the cheatica sensilla run in the middle area of the scape. It has a stout and very long shaft, which arises from a rounded cavity in the surface of the cuticle.

B) The pedicel (P; second antennal segment). The pedicel is a cone-like structure that measures ~284.5 μm in its maximum length, slightly longer than the scape, movable with

Table 1. Measurements (μm) of antennae of male and female peach fruit fly, *Bactrocera zonata*.

Segment	Length (μm)	
	Males	Females
Scape	100 ± 7 a	138.46 ± 9 b
Pedicel	230.76 ± 11 a	269.23 ± 10 b
Funiculus	553.84 ± 9 a	576.92 ± 6 a
Total length of antenna	846.15 ± 20 a	1000 ± 18 b

Values are mean ± standard error; n = 5. The values for each segment within a parameter by sex followed by the same letter are not significantly different (Student's *t*-test, *P* > 0.05).

Table 2. Different types of sensilla observed on the scape of male and female peach fruit fly, *Bactrocera zonata*. + to +++ indicate relative numbers of sensilla.

Types of sensilla	Male	Female
Trichoid sensilla (TrI, II)	+++ (dense)	+
Basiconica sensilla (BSII)	+	+++ (dense)
Cheatica sensilla (Ch)	+(n ≈ 11)	+(n ≈ 11)

Table 3. Different types and measurements (μm) of sensilla observed on the pedicel of male and female peach fruit fly, *Bactrocera zonata*, derived from at least ten measurements of each sensillar type for each sex. + to +++ indicate relative numbers of sensilla.

Types of sensillae	Male	Female
Trichoid Sensilla (TrI, II)	+++ (dense; ~10–13.6 μm)	+(slight; ~10–13.6 μm)
Basiconica sensilla (BSII)	+	++
Campaniform sensilla	++	absent
Cheatica sensilla (Ch)	+(larger; ~19–40.9 μm)	+(~15.4–23.6 μm)

scape to allow the movement of antenna. It is reinforced and fringed with many types of sensilla (Table 3, Figure 3A, B). The total number of sensilla observed in males was greater than in females. Numerous microtrichia as well as trichoid (TrI, II), cheatica, and basiconica (II) sensilla were observed on the pedicel.

- 1) Trichoid sensilla (Tr I, II): The most conspicuous sensilla observed in both sexes, but thicker in males than in females.
- 2) Basiconica sensilla (BSII): Basically trichoid hairs that are much reduced in length and changed in form to be swollen at the base with short neck. Found in both sexes.
- 3) Campaniform sensilla (dome-like structure): Found in males but absent in females.
- 4) Cheatica sensilla (Ch): Long, fluted spines or bristles that arise from a depression of the surface of the cuticle. Found at the periphery of the pedicel near the base of the funiculus. Found in both sexes, but larger and thicker in males than in females.

C) The funiculus (third antennal segment): The funiculus is the most important antennal segment. It is an elongate and un-segmented flagellum. A large protruding arista extends from the superior edge of the outer surface of the funiculus. The third antennal segment of females (~576.92 µm) tended to be larger than that of males (~553.84 µm). Numerous sensilla were found. It is densely covered with microtrichia, which gradually diminished in density from the base to the tip. Four major types of sensilla (trichoid, basiconica, clavate

Table 4. Different types of sensilla observed on the funiculus of male and female peach fruit fly, *Bactrocera zonata*, derived from at least ten measurements of each sensillar type for each sex. + to +++ indicate relative numbers of sensilla.

Types of sensilla	Male	Female
Trichoid sensilla (TrI, II)	++ (~7.3–9.5 µm)	++ (Larger; ~10.9–14.1 µm)
Basiconica sensilla (BSI)	++ (~5–7.3 µm)	++ (Larger; ~16.4 µm)
Coeloconica sensilla (Col)	absent	+ (~3.3 µm)
Coeloconica sensilla (ColI)	+ (~3.2–3.5 µm)	absent

and coeloconica sensillae) were observed on the flagellum (funiculus) of male and female *B. zonata*. All sensillae were oriented in a direction to the tip of antenna, giving the flagellum a velvety appearance. The funicular sensilla observed in males was greater than in females (Table 4, Figure 4A, B).

- 1) Trichoid sensilla (Tr I, II): The first type of trichoid sensilla (TrI) is the most numerous type found on the flagellum. Densely distributed over the dorsal surface, but rarely found on the proximal part of the ventral surface. The second type (TrII) is usually slightly curved, thin walled sensilla. Less numerous than the first type (I). Trichoid sensillae longer in females than in males, but thicker in males.
- 2) Basiconica sensilla (BS I): Basiconica sensillae were well distributed in the floor of the funicular surface. Characterized as digitiform (finger-like) with a rounded point and a smooth surface. Basiconic sensilla showed great variation in length, larger in females than in males.
- 3) Clavate sensilla: This type of sensilla is not a very common receptor type. Localized on the proximal end of the funiculus, close to the pedicel. Clavate sensilla similar to the basiconic sensilla but shorter and club-like. Found in both sexes.

- 4) Coeloconica sensilla: Coeloconic sensillae are the shortest and fewest sensillar types found on the flagellum of males and females. Scattered irregularly on the whole surface and arise from a depression of the integument or cavity called “sacculus.” Sacculus has a single opening with an irregular rounded margin at the cuticle surface. Males contain coeloconica sensilla type (II) (CoII), which are curved, while females have coeloconica sensilla type (I) (CoI).

Discussion

The antennae of *B. zonata* were very similar in terms of their general structure to those of other fruit flies studied, such as *A. ludens*, *C. capitata*, *D. cucurbitae*, *D. dorsalis*, and *A. serpentine* (Levinson et al. 1987; Dickens et al. 1988; Castrejón-Gómez 2006), which are composed of three segments, although the size of the various sensillar types varies from species to species. The significant conspecific morphometric difference was in the total length of the antennae of male and female *Dacus* species. However, the greater length of the female antenna might suggest females have more sensillae than males, as is true of the Queensland fruit fly, *D. tryoni* (Giannakakis and Fletcher 1985).

This study showed that in *B. zonata*, both sexes had three distinct types of the sensilla on the scape: trichoid, basiconic II, and cheatica. These sensillae were similar to *L. babiyari* (Ehab 2008). Sukontason et al. (2004) recorded only one type of trichoid sensillae on the scape of *P. dux*, while the basiconic type was absent. Also, Arzuffi et al. (2008) reported that both sexes of *T. curvicauda* had only trichoid sensilla. The results indicated that the pedicel had two types of trichoid (trichoid

sensillae are mechano-sensitive, chemo-sensitive, and olfactory receptors and could be daully mechano-/chemo-receptors), basiconic II, and cheatica sensilla (which function as mechanoreceptors) on both sexes. Also, the male only had campaniform sensilla (dome-like structure), which are mechano-receptors; these sensilla may be because males are strongly attracted to and compulsively feed on methyl eugenol, while no females are ever attracted to or captured in methyl-eugenol - baited clear-traps (Tan and Nishida 2012). However, three types of trichoid sensillae (Tr I, II and IV) were found on the pedicel of *L. babiyari* (Ehab 2008). Sukontason et al. (2004) reported the presence of only one type of trichoid sensillae on *P. dux*. However, Manoj and Sofian-Azirun (2002) found only sensilla chaetica (ch) on the scape and pedicel of *B. caraznbolae*. Trichoid sensillae function as a mechano-receptors in numerous insects, as stated by Fernandes et al. (2002) for *Dermatobia hominis*, by Merivee et al. (2002) for *Bembidion properans*, by Renthall et al. (2003) for *Solenopsis invicta*, and by Ochieng et al. (2000) for *Microplitis croceipes*.

Four morphologically distinct types of the sensillae were found on the funiculus: trichoid (I, II), basiconic (I), clavate, and coeloloconic. These sensilla are similar to the ones reported in other species of tephritids (Hallberg et al. 1984; Gianakakis and Fletcher 1985; Levinson et al. 1987; Mayo et al. 1987; Vasey and Ritter 1987; Dickens et al. 1988; Bigiani et al. 1989; Hull and Cribb 1997; Castrejón-Gómez 2006; Chen and Fadamiro 2008). Similar findings of the two types of trichoid sensillae present on the antenna were reported in *Calliphora erythrocephala* (Berned 1985; Kuhbandner 1984); in *Chrysomya penguins*, *C. megacephala*, *C. rufifacies*, and *Lucilia cuprina* by Sukontason et al. (2004); and in *Cochliomyia hominivorax* by Fernandes et al.

(2004). However, Giangiuliani et al. (1993) mentioned that *Trichopoda pennipes* completely lacked trichoid sensillae.

The results of our study showed that trichoid and basiconic sensilla of the females were significantly longer than those of the males. This difference may be related to the function of the female's chemo-receptors. On the other hand, this phenomenon could be related to the sex pheromones received by the antennae of males. Also, similar findings were reported on the basiconic (Bs I) on the funicle of *P. nigro-lineata* by Rahal et al. (1996); in *T. pennipes* by Giangiuliani et al. (1993); in *Calliphora erythrocephala* by Kuhbänder (1984); in *Chrysomya penguins*, *C. megacephala*, *C. rufifacies*, and *Lucilia cuprina* by Sukontason et al. (2004); and in *Cochliomyia hominivorax* by Fernandes et al. (2004). In contrast, Sukontason et al. (2008) noticed the presence of two types of large aporous and small porous basiconic sensillae on the funicle of *C. penguins*.

Sensilla are considered the main communication system in insects between individuals and their external environment, and individuals locate their partners and host plants by using their sensilla. In order to achieve successful control of agricultural pests using synthetic sex pheromones, it is essential to have a better understanding of the peripheral sensory structure involved in the perception of pheromones, especially those of the antenna. Therefore, the studying of chemoreceptor's sensilla can be useful for controlling these destructive flies by using insecticides that block the function of these sensilla.

References

- Aluja M, Celedonio-Hurtado H, Liedo P, Cabrera M, Castillo F, Guillen J, Rios E. 1996. Seasonal population fluctuations and ecological implications for management of *Anastrepha* fruit flies (Diptera: Tephritidae) in commercial mango orchards in southern Mexico. *Environ. Ent.* 89: 654-667.
- Arzuffi R, Robledo N, Jorge V. 2008. Antennal sensilla of *Toxotrypana curvicauda* (Diptera: Tephritidae). *Florida Entomologist* 91(4): 669-673.
- Atwal AS. 1976. *Agricultural pests of India and Southeast Asia*. Kalyani Publishers.
- Awad AA. 1999. *Ultrastructural and morphological discrimination of adult, pupal and larval stages of *Spodoptera exigua* (Huebner), Lepidoptera: Noctuidae*. Ph.D. Thesis in Entomology, Faculty of Science, Assiut University.
- Berned K. 1985. Ultrastructure of the doublewalled sensilla on the funicle of *Calliphora erythrocephala* Meigen (Diptera: Calliphoridae). *Int. J. Insect Morphol. Embryol.* 14(4): 227-242.
- Bigiani A, Scalera G, Crnjar R, Tomassini-Barbarossa I, Magherini PC, Pietra P. 1989. Distribution and function of the antennal olfactory sensilla in *Ceratitis capitata* Wied. (Diptera: Tephritidae). *Boll. Zool.* 56: 305-311.
- Castrejón-Gómez VR. 2006. *Comportamiento sexual y volátiles emitidos por dos especies de insectos asociados al chicozapote, *Manilkara zapota* L. Van Royen. (Ebenales: Sapotaceae)*. Tesis de doctorado, El Colegio de la Frontera Sur, Tapachula, Chiapas, México.
- Chen L, Fadamiro HY. 2008. Antennal sensilla of the decapitating phorid fly, *Pseudacteon tricuspis* (Diptera: Phoridae).

Micron 39: 517-525.

Clements AN. 1999. *The Biology of Mosquitoes, Sensory Reception and Behaviour*, volume 2. CABI.

Dickens C, Hart WG, Light DM, Jang EB. 1988. Tephritid olfaction: morphology of the antennae of four tropical species of economic importance (Diptera: Tephritidae). *Ann. Entomol. Soc. America* 81: 325-331.

Drew RAI. 1989. The tropical fruit flies (Diptera: Tephritidae: Dacinae) of the Australasian and Oceanian regions. *Memoirs of the Queensland Museum* 26: 1-521.

Abouzied EM. 2008. Antennal and maxillary palp sensillae of male and female *Liosarcophaga babyari* Lehrer (Diptera: Sarcophagidae). *Bull. Ent. Soc. Egypt* 85: 29-48.

Ehmer B, Gronenberg W. 1997. Proprioceptors and fast antennal reflexes in the ant *Odontomachus* (Formicidae, Ponerinae). *Cell Tissue* 290: 153.

EPPO (European and Mediterranean Plant Protection Organization). 2003. *Report of EPPO Workshop on Bactrocera zonata*. UNESCO.

Fernandes F, Linardi P, Chaiarini-Garcia H. 2002. Morphology of the antenna of *Dermatobia hominis* (Diptera: Cuterebridae) based on scanning electron microscopy. *J. Med. Entomol.* 39: 36-43.

Giangiuliani G, Lucchi A, Vinson B, Fernando B. 1993. External anatomy of adult antennal sensilla of the fly, *Trichopoda pennipes* F. (Diptera: Tachinidae). *Int. J. Insect Morphol. Embryol.* 23(2): 105-113.

Giannakakis A, Fletcher BS. 1985. Morphology and distribution of antennal sensilla of *Dacus tryoni* (froggatt) (Diptera: Tephritidae). *Australian J. of Entomology* 24(1): 31-35.

Hallberg E, Van der pers JNC, Haniotakis GE. 1984. Funicular sensilla of *Dacus oleae*: Fine structural characteristics. *Entomol. Hellenica* 2: 41-46.

Hu F, Zhang GN, Jia FX, Dou W, Wang JJ. 2010. Morphological characterization and distribution of antennal sensilla of six fruit flies (Diptera: Tephritidae). *Annals of the Entomological Society of America* 103(4): 661-670.

Hull CD, Cribb BW. 1997. Ultra structure of the antennal sensilla of Queensland fruit fly, *Bactrocera tryoni* (Frogart) (Diptera: Tephritidae). *Int. J. Insect Morph. Embryol.* 26: 27-34.

Kapoor VC, Agarwal ML. 1982. *Fruit flies and their increasing host plants in India*. Proc. CEC/IOBC Intern. Symp. Athens/Greece, 16-19, November, 1982.

Keil TA. 1999. Morphology and development of the peripheral olfactory organs. In: Hansson BS, Editor. *Insect Olfaction*. Springer.

Kuhbander B. 1984. Ultrastructure and ontogeny of the hair sensilla on the funicle of *Calliphora erythrocephala* (Insecta, Diptera). I. The basiconic sensilla. *Zoomorphology* 104: 373-85.

Levinson HZ, Levinson AR, Schafer K. 1987. Pheromone biology of the Mediterranean fruit fly *Ceratitis capitata* (Wied.) with emphasis on the functional anatomy of the pheromone glands and antennae as well as mating

behaviour. *J. Appl. Entomol.* 104: 448-461.

Manoj A, Sofian-Azirun M. 2002. Ultra Structure of the Antennal Sensilla of the Fruit Fly *Bactrocera carambolae* (Insecta: Diptera: Tephritidae). *Malaysian J. of Sci.* 21(1 and 2): 37-44.

Mayo I, Anderson M, Burguete J, Robles-Chillida EM. 1987. Structure of superficial chemoreceptive sensilla on the third antennal segment of *Ceratitidis capitata* (Wiedemann) (Diptera: Tephritidae). *Int. J. Insect Morph. Embryol.* 16: 131-141.

Merivee E, Ploom A, Rahi M, Bresciani J, Ravn H, Luik A, Sammelselg V. 2002. Antennal sensilla of the ground beetle *Bembidion properans* Steph (Coleoptera: Carabidae). *Micron* 33: 429-440.

Ochieng SA, Park KC, Zhu JW, Baker TC. 2000. Functional morphology of antennae chemo receptors of the parasitoid *Microplitis croceipes* (Hymenoptera: Braconidae). *Arthropod Struct. Dev.* 29: 231-240.

Rahal Y, Barry P, Renou M. 1996. Antennal olfactory sensilla of the parasitoid fly, *Pseudoperichaeta nigrolineata* Walker (Diptera: Tachinidae). *Int. J. Insect Morphol. embryol.* 25: 145-152.

Renthal R, Velasquez D, Hampton J, Wergin W. 2003. Structure and distribution of antennal sensilla of the red imported fire ant. *Micron* 34: 405-413.

Rice MJ. 1989. The sensory physiology of pest fruit flies: conspectus and prospectus, In: Robinson AS, Hooper G, Editors. *Fruit Flies,*

Their Biology, Natural Enemies and Control, Vol. 3A. pp. 249-272. Elsevier.

Schneider D. 1964. Insect antennae. *Annu. Rev. Entomol.* 9: 103-122.

Snodgrass RE. 1944. *Principles of Insect Morphology*. McGraw Hill.

Sukontason K, Sukontason H, Piangjai S, Boomchu N, Chaiwong T, Ngren-Klum Sripadee D, Vogtsberger R, Olson O. 2004. Antennal sensilla of some forensically important flies on families Calliphoridae, Sarcophagidae and Muscidae. *Micron* 35: 671-679.

Sukontason K, Methanitikorn R, Kurahashi H, Vogtsberger RC, Sukontason KL. 2008. External morphology of *Chrysomya pinguis* (Walker) (Diptera: Calliphoridae) revealed by scanning electron microscopy. *Micron* 39(2): 190-197.

Tan KH, Nishida R. 2012. Methyl eugenol: Its occurrence, distribution, and role in nature, especially in relation to insect behavior and pollination. *Journal of Insect Science* 12:56. Available online: www.insectscience.org/12.56

Vasey CE, Ritter E. 1987. Antennal sensilla and setal patterns of the goldenrod gall fly, *Eurosta solidaginis* (Fitch) (Diptera: Tephritidae). *J. New York Entomol. Soc.* 95: 452-455.

White IM, Elson-Harris MM. 1992. Fruit flies of economic significance: their identification and bionomics. *CABI*.

Zacharuk R. 1985. Antennae and sensilla. In:
Kerkut GA, Gilbert LI, Editors.
*Comprehensive Insect Physiology,
Biochemistry and Pharmacology*. Pergamon.

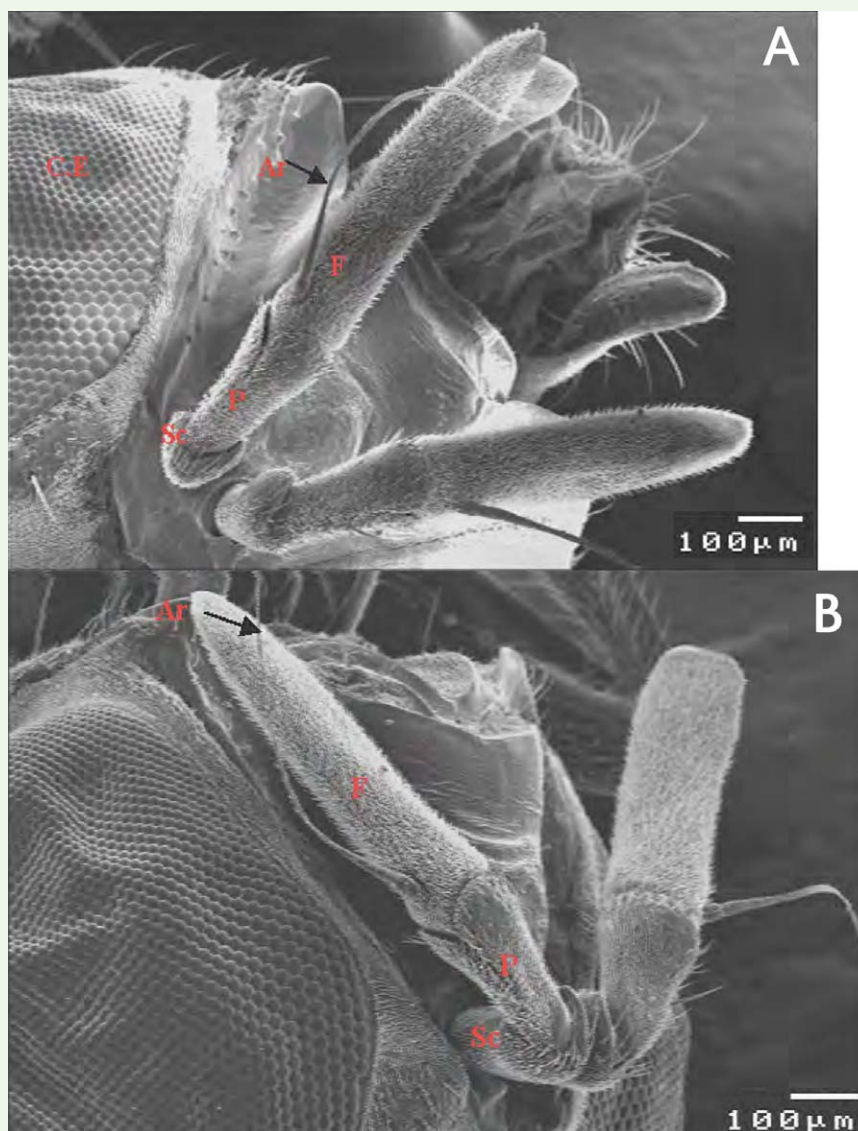
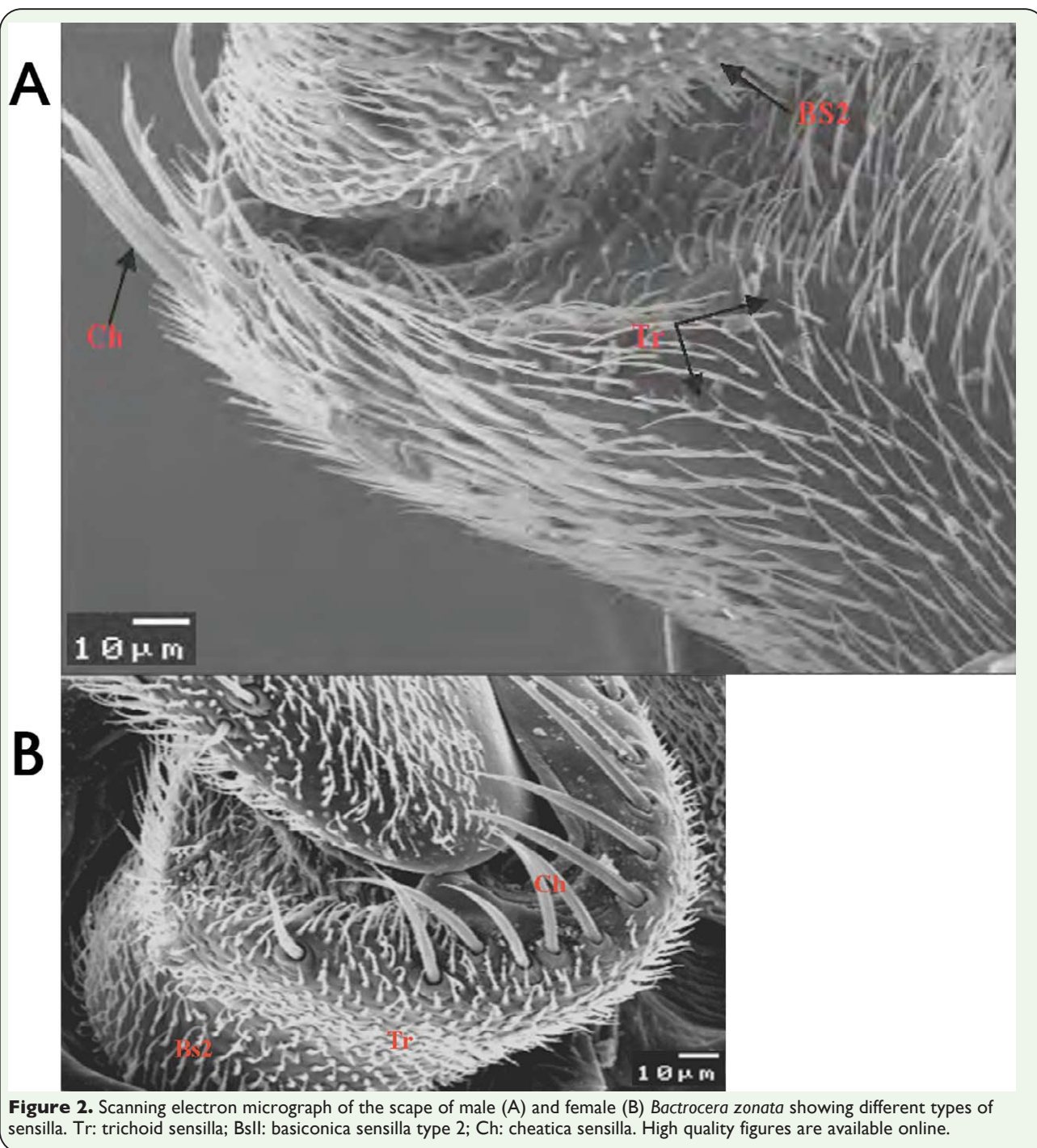


Figure 1. Scanning electron micrograph of the antennal segment of male (A) and female (B) *Bactrocera zonata*. Sc: scape; P: pedicel; F: funiculus; Ar: aristae. High quality figures are available online.



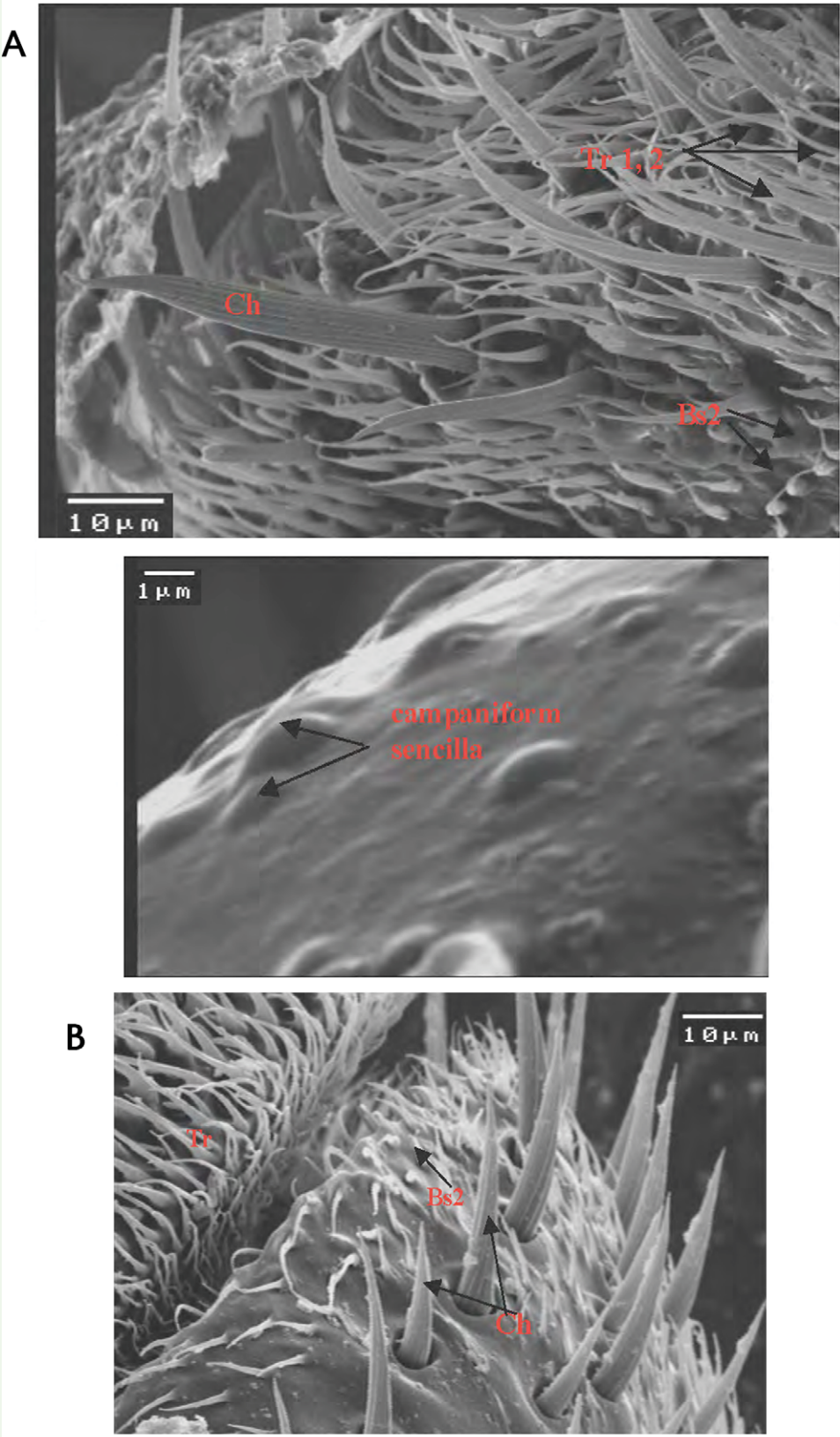


Figure 3. Scanning electron micrograph of the pedicel of male (A) and female (B) *Bactrocera zonata* showing different types of sensilla. TrI, II: trichoid sensilla type 1, 2; BsII: basiconica sensilla type 2; Ch: cheatichia sensilla. Campaniform sensilla only on the pedicel of male. High quality figures are available online.

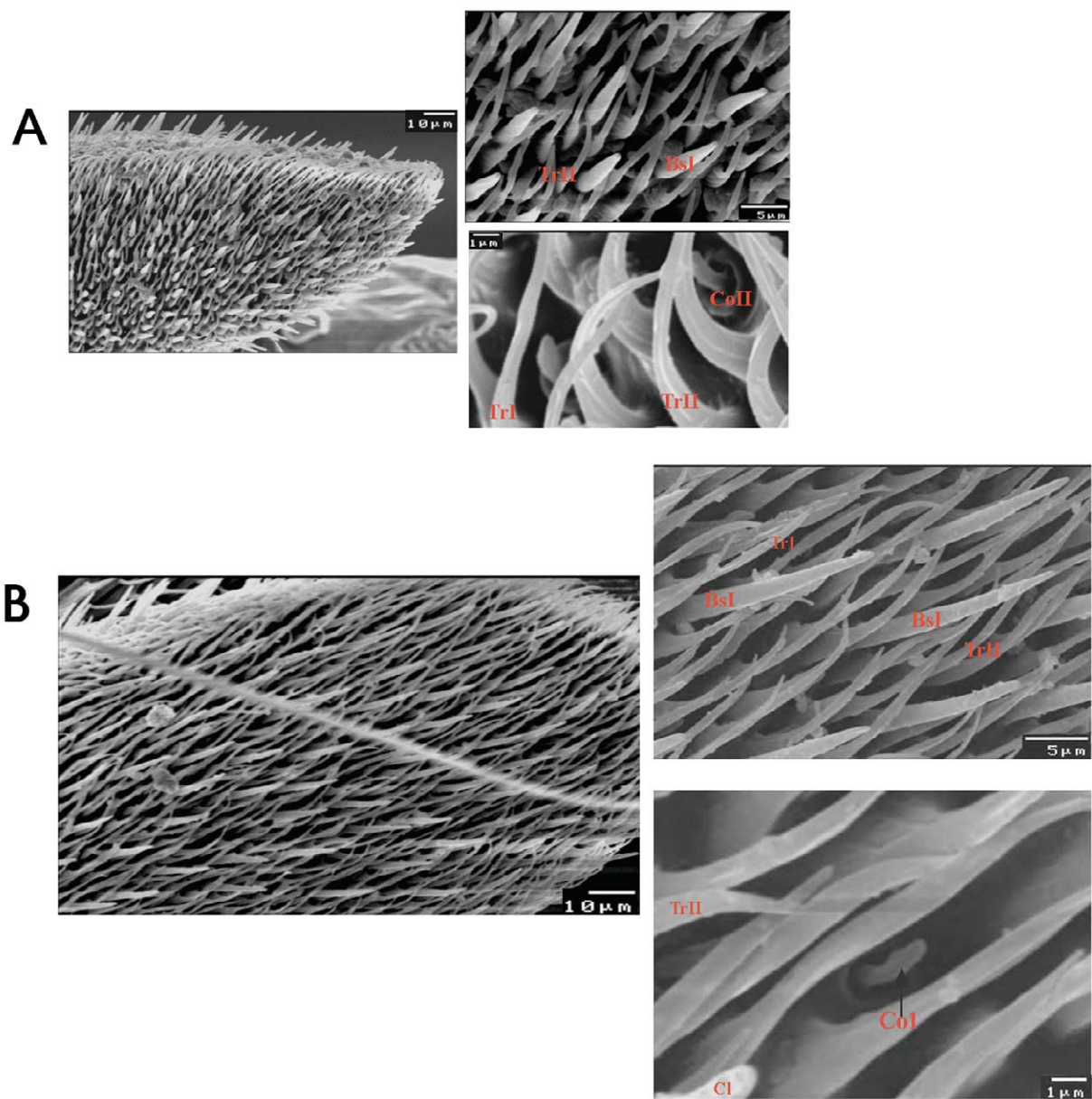


Figure 4. Scanning electron micrograph of the funiculus of male (A) and female (B) *Bactrocera zonata* showing different types of sensilla. TrI, II: trichoid sensilla type I, 2; BsI: basiconica sensilla type I; Cl: clavate sensilla; Col, II: coeloconica sensilla type I, 2. High quality figures are available online.