

## **The Initial Phase of Encapsulation of Silicone Oil Injected in *Samia cynthia ricini* (Lepidoptera, Saturniidae): The Innermost Structure of the Developing Capsule**

Authors: Takahashi, Sohji, and Enomoto, Ginko

Source: Zoological Science, 12(3) : 303-309

Published By: Zoological Society of Japan

URL: <https://doi.org/10.2108/zsj.12.303>

---

The BioOne Digital Library (<https://bioone.org/>) provides worldwide distribution for more than 580 journals and eBooks from BioOne's community of over 150 nonprofit societies, research institutions, and university presses in the biological, ecological, and environmental sciences. The BioOne Digital Library encompasses the flagship aggregation BioOne Complete (<https://bioone.org/subscribe>), the BioOne Complete Archive (<https://bioone.org/archive>), and the BioOne eBooks program offerings ESA eBook Collection (<https://bioone.org/esa-ebooks>) and CSIRO Publishing BioSelect Collection (<https://bioone.org/csiro-ebooks>).

Your use of this PDF, the BioOne Digital Library, and all posted and associated content indicates your acceptance of BioOne's Terms of Use, available at [www.bioone.org/terms-of-use](http://www.bioone.org/terms-of-use).

Usage of BioOne Digital Library content is strictly limited to personal, educational, and non-commercial use. Commercial inquiries or rights and permissions requests should be directed to the individual publisher as copyright holder.

---

BioOne is an innovative nonprofit that sees sustainable scholarly publishing as an inherently collaborative enterprise connecting authors, nonprofit publishers, academic institutions, research libraries, and research funders in the common goal of maximizing access to critical research.

## The Initial Phase of Encapsulation of Silicone Oil Injected in *Samia cynthia ricini* (Lepidoptera, Saturniidae): The Innermost Structure of the Developing Capsule

SOHJI TAKAHASHI and GINKO ENOMOTO

Department of Biology, College of Science, Nara Women's  
University, Nara 630, Japan

**ABSTRACT**—When 10  $\mu$ l of silicone oil was injected into the hemocoel of a 5-day-old 5th-instar larva of *Samia cynthia ricini*, the globular oil was encapsulated by hemocytes. The initial process of encapsulation was examined with scanning electron microscopy (SEM). Within 2 min after injection, granulocytes attached to the oil surface, and a thin membrane of amorphous substance occurred around the granulocytes. The cells immediately discharged numerous granules. A reticular network appeared around the degranulated cells, resulting in the formation of the innermost layer of the developing capsule. Compaction of capsule-forming hemocytes occurred after completion of the innermost layer of the developing capsule. These results suggest that a localized coagulation of hemolymph on the oil surface, which resembles ordinary hemolymph coagulation, constitutes the initial phase of encapsulation.

### INTRODUCTION

Cellular encapsulation is a common defense reaction in insects. In general, the reaction leads to an aggregation of hemocytes around parasites or biotic implants, and to disintegration and melanization of the innermost cells of the cellular envelope [7, 11, 13–16, 18, 19]. Abiotic implants are also encapsulated by hemocytes, sometimes, without melanization [7, 12, 18, 21, 23]. Brehélin *et al.* [5] reported the immediate occurrence of hemolymph coagulation around cellophane implants, involving coagulocytes in *Locusta migratoria* and *Melolontha melolontha*. Ennesser and Nappi [7] examined encapsulation of implants of altered allogenic nerve cords in *Periplaneta americana*, and observed that the initial-cellular response was the lysis of granulocytes on the surface of the implant, and the discharged cellular components, together with an amorphous substance, formed a layer of debris which coated the foreign surface. Their studies suggest that the initiation of cellular encapsulation is a cooperative reaction between cellular and humoral immune system, but it remains uncertain how this system is truly activated against a foreign material to encapsulate it.

In the present study, we injected a small volume of silicone oil as a foreign material into 5-day-old 5th-instar larvae of *Samia cynthia ricini*. The injected oil was globular in the hemolymph and encapsulated by hemocytes. After removing the oil, the innermost region of developing capsules was examined by SEM. Morphological events which successively occur at the initial step of the encapsulation are described.

### MATERIALS AND METHODS

#### Host insects

Larvae of the eri-silk worm, *Samia cynthia ricini*, which has been maintained for over 10 years in our laboratory were reared with leaves of *Ricinus communis* at 25°C under a photoperiod of 14-hr light and 10-hr dark. Five-day-old 5th-instar female larvae, each weighing about 7 g, were used as host specimens.

#### Silicone oil as a foreign material

Silicone oil, polydimethylsiloxane, (KF95<sup>®</sup>, Shinetsu Chemical Co. Tokyo) was used as a foreign material. This is a chemically inert material commonly used as lubricant. It is also used as an antifrosting agent for medical use.

When a small amount of the oil (less than 30  $\mu$ l) was injected into the hemocoel of larvae, it became globular in the hemolymph, and was encapsulated by hemocytes. In this study, 10  $\mu$ l of silicone oil was chosen as a foreign material. The oil was kept in a vacuum chamber to remove air bubbles until use.

#### Injection of oil

Each of 50 specimens was injected with silicone oil using a glass micro-syringe with a 27-gauge needle. Groups of 5 hosts were held for 2, 5, 10, 20 or 30 min, or 1, 10, 20, or 72 hr at 25°C. Specimens which were held for 2 or 5 min were killed by injecting 0.5 ml of cold 5% glutaraldehyde in 0.1 M cacodylate buffer (pH 7.2). After 1 hr of incubation on ice, the killed hosts were dissected in the Grace's medium (Gibco, Gland Island, New York). The capsules were excised together with surrounding tissues. Each capsule was placed on a thin plate of cellulose acetate and then was all sunk carefully into 2.5% glutaraldehyde fixative for 4 hr. While other specimens which were held for the later times, were killed by injecting 0.5 ml of cold 2.5% glutaraldehyde fixative. One hour later, they were dissected in the Grace medium and fixed again in 2.5% fixative for 4 hr. The capsules were excised together with surrounding tissues, and transferred to the fixative for 2 hr. All the capsules were processed by use of standard electron microscope techniques.

Accepted March 6, 1995

Received August 16, 1994

### Electron microscopy

The capsules, after washed in the buffer solution, were post-fixed in 1% osmium tetroxide in 0.1 M cacodylate buffer (pH 7.2) for 20 min and washed again in the buffer. Capsules were then dehydrated through a graded series of acetone. During dehydration, they were cut into several pieces to remove silicone oil. For SEM, the pieces were placed in isoamyl acetate and dried in liquid carbon dioxide by the critical point method. The preparations were coated with gold and examined with a Hitachi S430 SEM. For TEM, pieces of the post-fixed capsules were embedded in Spurr resin. Ultra-thin sections were poststained with uranyl acetate and lead citrate, and observed in a Hitachi HU12A TEM.

### Hemocyte count and cell type determination

Larvae were bled by amputation of dorsal spines. Fresh hemocytes were taken over a Toma's cell count slide and immediately photographed under a Nomarski interference microscope. The total hemocyte count (THC: cell count/mm<sup>3</sup> hemolymph) and the differential hemocyte count (DHC) were determined from the micrographs. Cell types were classified and identified according to their cytoplasmic inclusions from TEM studies [10, 17, 19], or estimated by the external shape of the cells observed by SEM [10, 17].

## RESULTS

### Effects of oil injection on the number of circulating hemocytes

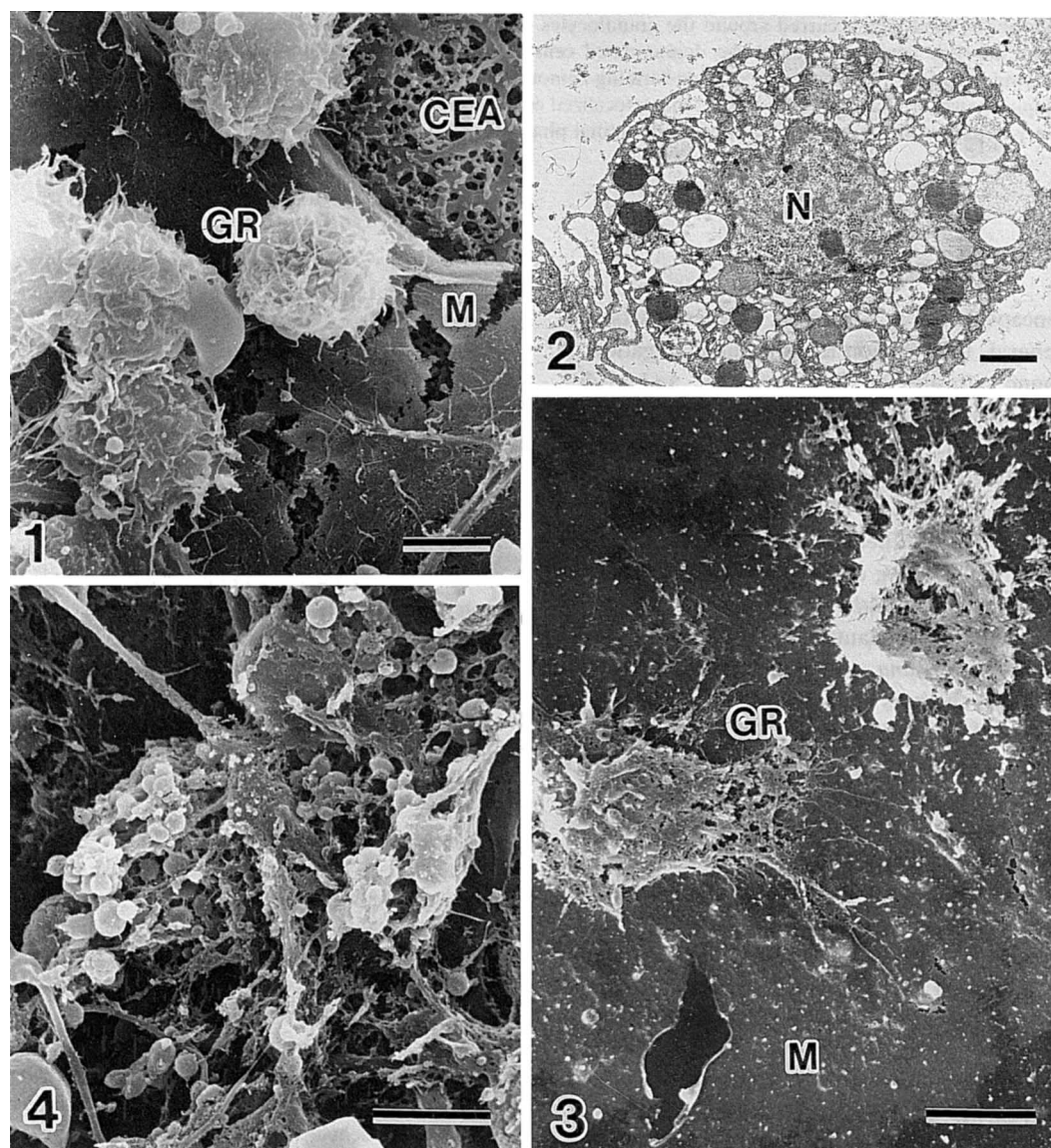


FIG. 1. Granulocytes retrieved together with silicone oil 2 min after injection. Note that these cells are attached to an amorphous membrane.

GR: granulocytes. M: amorphous membrane. CEA: plate of cellulose acetate. Bar=5  $\mu$ m

FIG. 2. TEM of granulocyte. Electron dense, electron lucent and structural granules, and numerous vesicles are seen. N: nucleus. Bar=1  $\mu$ m.

FIG. 3. The surface view of a 5-min-old capsule. Lysing granulocytes extend filopodial processes on amorphous membrane. GR: granulocyte, M: amorphous membrane. Bar=5  $\mu$ m.

FIG. 4. The surface view of a 10-min-old capsule. Granulocytes disintegrate and release numerous granules. Bar=5  $\mu$ m.

Circulating hemocytes were counted in the hosts at the two stages; shortly before and 10 hr after oil injection, in order to elucidate the effect of oil injection on hemocyte population. The THCs were  $9,800 \pm 860$  ( $N=5$ , Mean  $\pm$  SD) and  $10,500 \pm 1,650$ , respectively. This result revealed that THCs fluctuated around the level of  $10,000/\text{mm}^3$  during the first 10 hr after injection. Plasmatocytes (60% of circulating hemocytes) and granulocytes (38%) were predominant. The ratio of two cell populations was unchanged at the two stages. Other types of hemocytes were small prohemocytes and oenocytoids. These cells were not examined in this study.

#### *Hemocytes in direct contact with the oil surface*

Two minutes after oil injection, the surface structure of the silicone oil, which was fixed on the plate of cellulose

acetate was observed by SEM. There were filopodial hemocytes and an amorphous membrane around the cells (Fig. 1). The cells contained two types of granules; electron dense and electron lucent granules, and large numbers of vesicles were also seen in the cytoplasm (Fig. 2), which enabled us to identify these cells as granulocytes [5, 10]. The amorphous membrane was so thin and fragile that it was often broken during preparation for SEM.

#### *Formation of the innermost layer*

When the oil globules were retrieved 5 min after injection, they had been almost enveloped by a thin membrane about 50–60 nm in thickness (Fig. 3). Granulocytes were extending cytoplasmic processes. The cell bodies showed lysing figures. In 10-min-old capsules, there was marked degeneration of granulocytes all around the oil surface (Fig. 4).

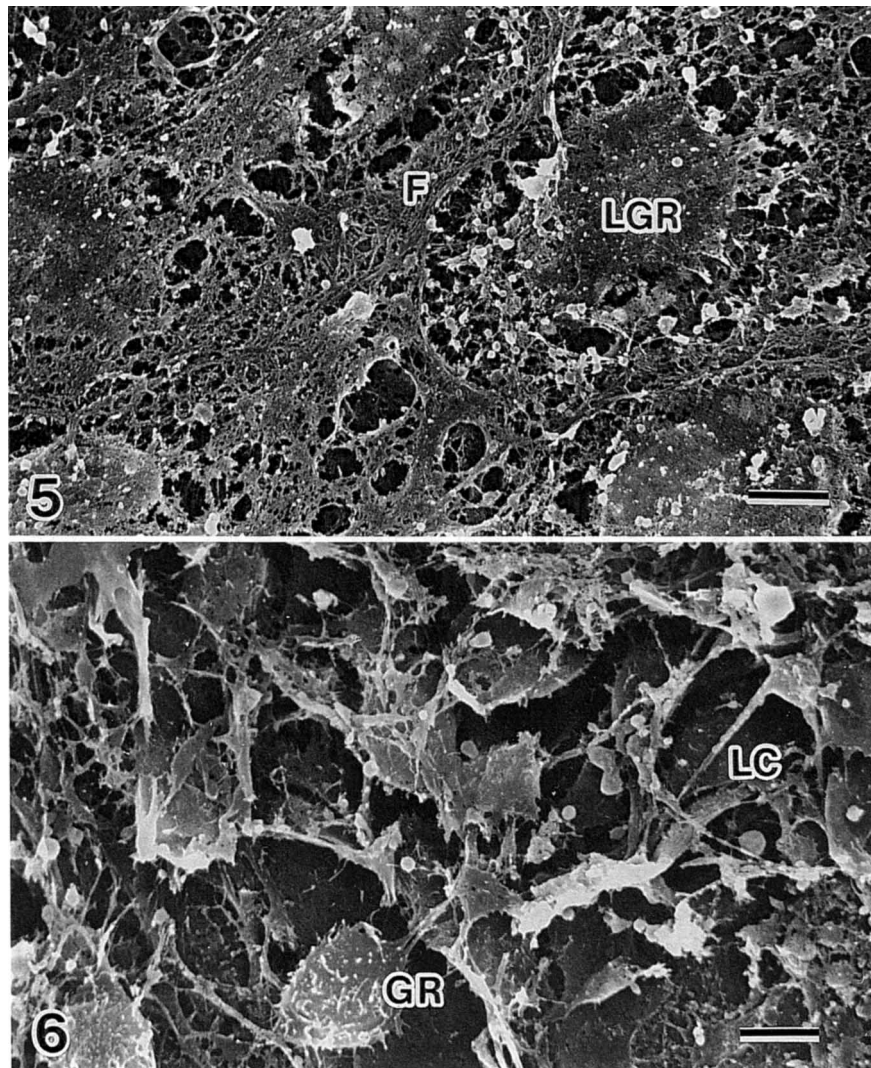


FIG. 5. The inner surface of a 20-min-old capsule. Network structure consists of lysed granulocytes and fibrillar structure. LGR: lysed granulocyte. F: fibrillar structure, Bar =  $5 \mu\text{m}$ .

FIG. 6. The outer surface of the 20-min-old capsule. Intact granulocytes aggregate extending cytoplasmic processes. GR: granulocyte. LC: lamellar hemocyte. Bar =  $5 \mu\text{m}$

### *The innermost region of developing capsules*

Capsules were obtained from larvae 20 min after injection, and their inner and outer surfaces were examined. The amorphous membrane was no more seen. The inner surface consisted of degranulated lysing cells which were extending cytoplasmic processes, and forming prominent network around the cells (Fig. 5). Lysing cells were arranged at intervals of about 20–40  $\mu\text{m}$  from cell to cell. Numerous granules (100–300 nm in diameter) and fibrillar structure was also seen. While the outside view of this capsule was quite different from that of the inner surface (Fig. 6). Numerous intact cells were aggregating on and near the capsule. Granulocytes and lamellar hemocytes (probably modified plasmatocytes) were loosely in contact with their cytoplasmic processes.

In 1-hr-old capsules, the network structure in contact with the oil surface became more strongly reticulated by the increase of fibrillar material (Fig. 7). In 10-hr-old capsules, deposition of amorphous structure appeared on the innermost region of the network (Fig. 8). This structure developed and finally covered the inner surface of the developing

capsule. The inner surface of 20-hr-old capsules had been coated with the amorphous structure, and numerous hemocytes were aggregating outside the innermost layer (Fig. 9). These cells consisted of various types of intact cells. Spindle shaped or lamellar plasmatocytes were more frequently seen, while granulocytes and degranulating hemocytes were also observed (Fig. 10). Compaction of hemocytes was observed in the capsules of later than 20 hr after injection.

### *72-hr-old capsules of silicon oil*

Milky-white capsules of silicon oil were obtained from insects 72 hr following injection. Figure 11 shows a transverse section of the capsule, which consists of about 15 cell layers, being 30–40  $\mu\text{m}$  thick. The capsule can be divided into the inner and outer regions. The inner region consists of necrotic cells. Though the nuclei are present, mitochondria and other cytoplasmic structures are obscure. In SEM observation, the inner surface consisted of the amorphous structure (Fig. 12). No brown colored, melanized area was found in the inner layer of the capsule. The outer surface of the capsule was covered with numerous intact cells (Fig. 13).

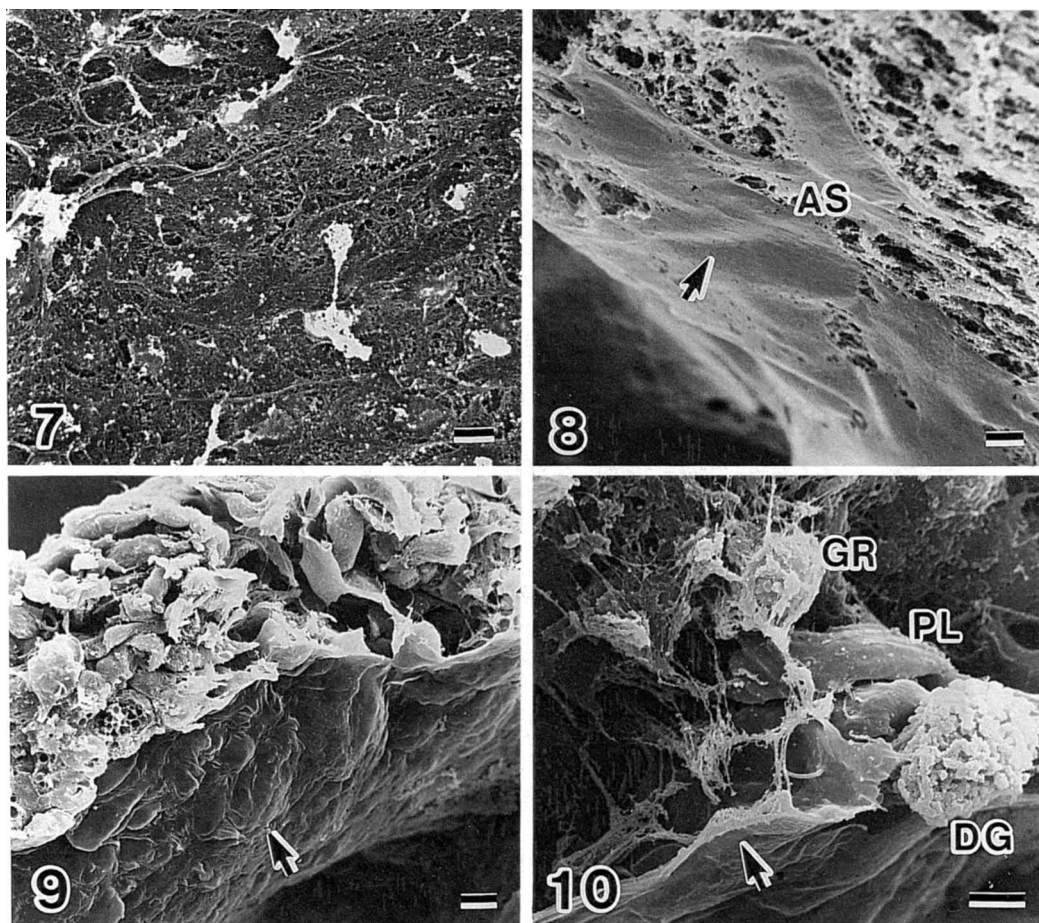


FIG. 7. The inner surface of a 1-hr-old capsule. The network structure develops to envelope the oil surface. Bar = 5  $\mu\text{m}$

FIG. 8. The inner surface (arrow) of a 10-hr-old capsule. Amorphous substance seals network. AS: amorphous substance. Bar = 5  $\mu\text{m}$ .

FIGS. 9 and 10. The transverse view of a 20-hr-old capsule. The inner surface (arrow) of the capsule consists of an amorphous substance by which the oil globule is completely isolated from aggregating cells. F: fibrillar strands, DG: degranulating cell, PL: plasmatocyte, GR: granulocyte. Bar = 5  $\mu\text{m}$



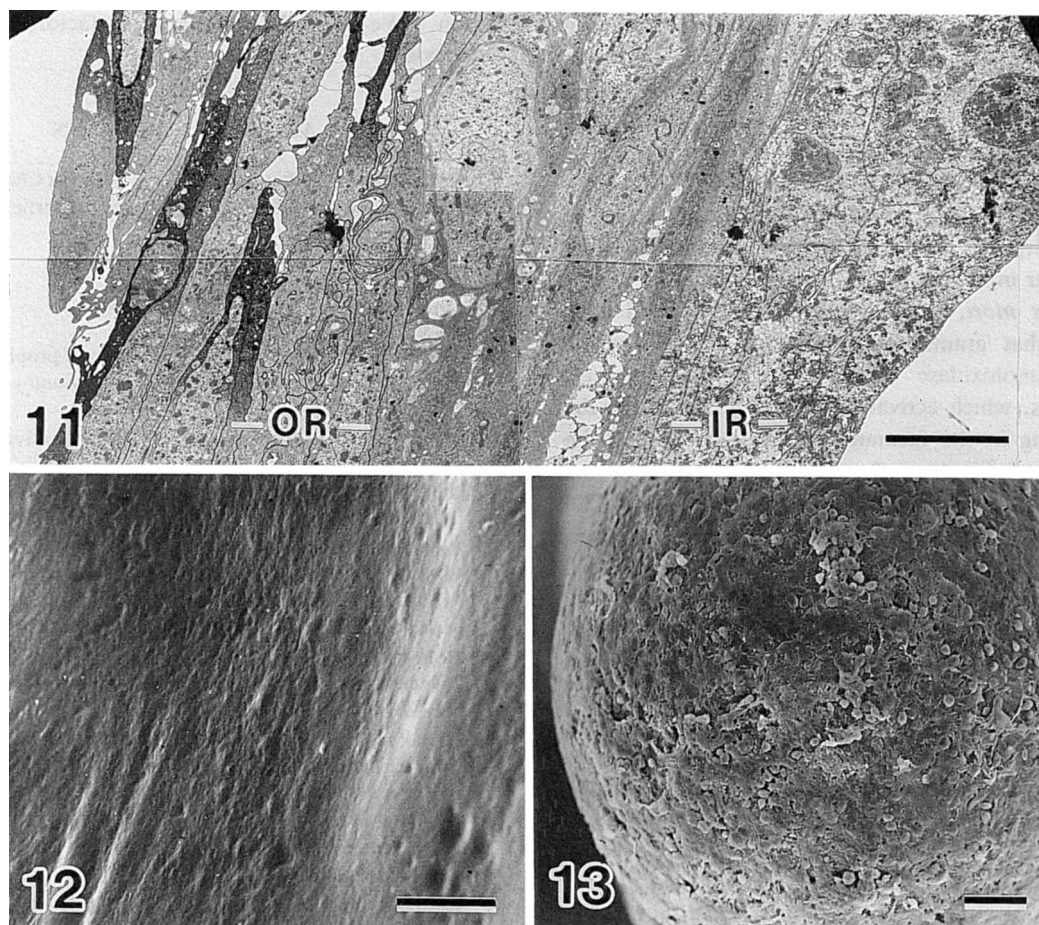


FIG. 11. TEM of a 72-hr-old capsule. The capsule consists of about 15 cells in thickness, which can be divided into two regions. The inner region (-IR-) consists of necrotic cells and the outer (-OR-) of flattened cells. Melanin is not seen. Bar = 5  $\mu$ m

FIG. 12. The inner surface of a 72-hr-old capsule coated with amorphous substance. Wrinkle patterns on the surface will be an artifact when the capsule is prepared. Bar = 5  $\mu$ m.

FIG. 13. The outer surface of a 72-hr-old capsule. It consists of numerous hemocytes. Bar = 50  $\mu$ m.

It seemed that encapsulation process were still being in progress [11].

## DISCUSSION

Morphological events of the initial process of encapsulation occurring on silicone oil were clearly shown by removal of the oil itself. Some characteristics of the encapsulation are as follows:

### *Silicone oil as a foreign material*

Silicone oil was very useful as a foreign material for the *in vivo* experiments of encapsulation in *Samia cynthia ricini*. It was very easy to inject with 10  $\mu$ l of silicone oil into the hemocoel. We could repeat the same experiments in many specimens collected from other batches, and obtained the results similar to those presented here. Silicone oil is known not only to be chemically inert and not toxic to mammals, but also to be harmless to insects. It may be considered that the encapsulation of silicone oil was initiated by the one-way

response of the host immune systems to the injected oil.

### *Type of encapsulation*

There is a correlation between high hemocyte count (more than 6,000 cells/mm<sup>3</sup>) and the occurrence of cellular encapsulation, whereas a lower hemocyte number correlates with the initiation of humoral encapsulation [8]. In 5-day-old 5th-instar larvae, the THC was about 10,000/mm<sup>3</sup>. The DHC of granulocytes was about 3,800/mm<sup>3</sup>. We estimated from TEM micrographs that about 600–1,000 granulocytes/mm<sup>2</sup> attached to the oil surface and disintegrated within 20 min.

### *Initiation of capsule formation*

In general, the granulocytes come in contact with the surface of foreign materials, disintegrate and release granules, probably containing encapsulation promoting factor(s) [16, 20]. When silicone oil was injected, granulocytes first attached to the oil surface. It is noteworthy that the thin membrane of amorphous substance had occurred on the oil

surface 2 min after injection. The amorphous substance, in appearance, looked like the hemolymph coagulum which was formed in the hemolymph taken out of the body [4, 6, 16]. If this interpretation would be correct, it will mean that within 2 min after injection, granulocytes disintegrate to release hemocyte coagulogen on and near the oil surface. However, we had no technique to demonstrate it in the short time *in vivo*. The amorphous substance changed into fibrillar structure 20 min after injection.

In *Bombyx mori*, Ashida and colleagues [1–3] have demonstrated that granulocytes discharge granules which contain prophenoloxidase (proPO) activating enzymes, serine proteases, which activate the proPO cascade in the plasma, resulting in the formation of melanin around the capsule, and the activation of proPO is necessary for the activation of immune systems of the insect. Wago [22] described that preinjection of a serine protease inhibitor, p-nitrophenyl p'-guanidino benzoate (p-NPGB) suppressed an attachment of granulocytes to a foreign surface.

On the assumption that the activation of proPO may be related to the initial step of encapsulation, we carried out a preliminary experiment [Takahashi, unpublished data]: Silicone oil suspended with fine crystals of 10  $\mu$ g p-NPGB (Sigma, St. Louis) was injected into 5th-instar larvae. No encapsulation occurred against it within 20 hr. While the oil suspended with p-NPGB heated at 70°C was completely encapsulated. It is suggested that serine protease(s) and probably, the activation of proPO cascade will be necessary for the encapsulation of silicone oil, though the reaction is not accompanied with visible melanin formation. It will be an intriguing problem how the morphological events occur on the foreign surface in relation to these biochemical events.

#### *Innermost region of developing capsules*

The network structure was predominant in the innermost region of capsules later than 20 min after injection. We checked whether or not the network structure would be an artifact-product formed during preparation for SEM. Soluble components were surely removed from the innermost region as described previously [21], but this structure was commonly found in a number of SEM micrographs of capsules. It was presumably derived from humoral components and/or resulted from lysis of granulocytes.

The innermost layer has often been described as a connective tissue in some insects [12, 17–19]. This layer became gradually undetectable in the capsules older than 72 hr old. Salt [9, 18] observed in *Ehestia* larvae that the inner layer substance moved to the intercellular spaces during cell compaction. The innermost layer has been suggested to be an actual barrier to protect the hemocoel at the initial phase of encapsulation. Plasmatocytes and other cells came toward the foreign surface during and after completion of the innermost layer. Compaction of the cells to form the capsule occurred over 20 hr later after injection. Thus, the recruitment and compaction of capsule-forming cells may be induced by factor(s) released from the innermost

region. We are now interested in the factor(s) which recruit hemocytes.

### ACKNOWLEDGMENTS

We thank Mr. Makio Yamaguchi of Shinetsu Chemical Co., who kindly presented us sufficient data on the properties of silicone oil KF95<sup>®</sup> for the research.

### REFERENCES

- Ashida M, Dohke K (1980) Activation of prophenoloxidase by the activating enzyme of the silkworm, *Bombyx mori*. *Insect Biochem* 10: 37–47
- Ashida M, Ishizaki Y, Iwahana H (1983) Activation of prophenoloxidase by bacterial cell walls or  $\beta$ -1,3-glucans in plasma of the silkworm, *Bombyx mori*. *Biochem Biophys Res Commun* 113: 562–568
- Ashida M, Yamazaki HI (1990) Biochemistry of the phenoloxidase system in insects: with special reference to its activation. In "Moulting and Metamorphosis" Ed by E Ohnishi, H Ishizaki, Japan Scientific Societies Press, Tokyo, pp 239–265
- Bohn H (1986) Hemolymph clotting in insects. In "Immunity in Invertebrates." Ed by M Brehélin, Springer-Verlag, Berlin, pp 188–207
- Brehélin M, Hoffman JA, Matz G, Porte A (1975) Encapsulation of implanted foreign bodies in *Locusta migratoria* and *Melolontha melolontha*. *Cell Tissue Res* 160: 283–289
- Brehélin M (1979) Hemolymph coagulation in *Locusta migratoria*: Evidence for functional equivalent of fibrinogen. *Comp Biochem Physiol* 62B: 329–334
- Ennesser CA, Nappi AJ (1984) Ultrastructural study of the encapsulation response of the American cockroach, *Periplaneta americana*. *J Ultrastruct Res* 87: 31–45
- Götz P (1986) Encapsulation in arthropods. In "Immunity in Invertebrates" Ed by M Brehélin, Springer-Verlag, Berlin, pp 153–170
- Grimstone AV, Rotherham S, Salt G (1967) An electron-microscope study of capsule formation by insect blood cells. *J Cell Sci* 2: 281–292
- Gupta AP (1992) Insect immunocytes and other hemocytes: Roles in cellular and humoral immunity. In "Immunology of Insects and Other Arthropods". Ed by AP Gupta, CRC Press, Boca Raton, pp 19–118
- Han SS, Gupta AP (1989) Arthropod immune system. II. Encapsulation of implanted nerve cord and "plain gut" surgical suture by granulocytes of *Blattella germanica* (L) (Dictyoptera: Blattellidae). *Zool Sci* 6: 303–320
- Lackie AM (1988) Haemocyte behavior. In "Advances in Insect Physiology. Vol. 21" Academic Press, London, pp 85–178
- Rahmet-Alla M, Rowley AF (1989) Studies on the cellular defense reactions of the *Madecira* cockroach, *Leucophaea maderae*: Nodule formation in response to injected bacteria. *J Invert Pathol* 54: 200–207
- Ratcliffe NA (1986) Insect cellular immunity and the recognition of foreignness. *Symp Zool Soc Lond* 56: 21–43
- Ratcliffe NA, Rowley AF (1979) Role of hemocytes in defense against biological agents. In "Insect Hemocytes" Ed by AP Gupta, Cambridge Univ Press, Cambridge, pp 331–414
- Ratner S, Vinson SB (1983) Encapsulation reactions *in vitro* by haemocytes of *Heliothis virescens*. *J Insect Physiol* 29: 855–864
- Rowley AF, Ratcliffe NA, Leonard CM, Richards EH, Renwanz LR (1986) Humoral recognition factors in insects, with particular reference to agglutinins and the prophenoloxidase

- system. In "Hemocytic and Humoral Immunity in Arthropods" By AP Gupta, Weley, New-York. pp 381–407
- 18 Salt G (1970) The Cellular Defense Reactions of Insects, Cambridge Univ Press, Cambridge
- 19 Sato S, Akai H (1976) An ultrastructural study of capsule formation by *Bombyx* hemocytes. Annot Zool Jap 49: 177–188
- 20 Schmidt AR, Ratcliffe NA (1978) The encapsulation of araldite implants and recognition of foreignness in *Clitumnus ex-*  
*tradentatus*. J Insect Physiol 24: 511–521
- 21 Takahashi S, Enomoto G (1987) Scanning electron microscopic study of the initial phase of encapsulation in *Samia cynthia ricini*. Develop Growth & Differ 29: 249–256
- 22 Wago H (1992) Phagocytic recognition in *Bombyx mori*. In "Immunology of Insects and Other Arthropods." Ed by AP Gupta, CRC Press, Boca Raton, pp 215–235