



Anaplasma bovis and Bartonella spp. in Libyan Jirds (Meriones libycus) from China

Authors: Wang, Shiyi, Wang, Huiqian, Cui, Nannan, Wang, Suwen, Zhang, Chunju, et al.

Source: Journal of Wildlife Diseases, 60(3) : 792-794

Published By: Wildlife Disease Association

URL: <https://doi.org/10.7589/JWD-D-23-00179>

BioOne Complete (complete.BioOne.org) is a full-text database of 200 subscribed and open-access titles in the biological, ecological, and environmental sciences published by nonprofit societies, associations, museums, institutions, and presses.

Your use of this PDF, the BioOne Complete website, and all posted and associated content indicates your acceptance of BioOne's Terms of Use, available at www.bioone.org/terms-of-use.

Usage of BioOne Complete content is strictly limited to personal, educational, and non - commercial use. Commercial inquiries or rights and permissions requests should be directed to the individual publisher as copyright holder.

BioOne sees sustainable scholarly publishing as an inherently collaborative enterprise connecting authors, nonprofit publishers, academic institutions, research libraries, and research funders in the common goal of maximizing access to critical research.

Anaplasma bovis and *Bartonella* spp. in Libyan Jirds (*Meriones libycus*) from China

Shiyi Wang,^{1,2,5} Huiqian Wang,^{1,2,5} Nannan Cui,^{1,2,5} Suwen Wang,^{1,2} Chunju Zhang,³ Lijuan Tang,⁴ Wenbo Tan,^{1,2,6} and Yuanzhi Wang^{1,2,6} ¹Department of Basic Medicine, School of Medicine, Shihezi University, Shihezi City, Xinjiang Uygur Autonomous Region 832002, People's Republic of China; ²Key Laboratory for Prevention and Control of Emerging Infectious Diseases and Public Health Security, the XPCC, School of Medicine, Shihezi University, Shihezi City, Xinjiang Uygur Autonomous Region 832002, People's Republic of China; ³Tumusuk City Centers for Disease Control and Prevention, 17 Qianhai East Street, Tumushuk City, Xinjiang Uygur Autonomous Region 843806, People's Republic of China; ⁴Bayingol Vocational and Technical College, Korla City, Xinjiang Uygur Autonomous Region 841000, People's Republic of China; ⁵These authors contributed equally to this study; ⁶Corresponding authors (email: 603679737@qq.com [W.T.]; wangyuanzhi621@126.com [Y.W.]

ABSTRACT: *Anaplasma bovis* (1), *Bartonella krasnovii* (3), and *Bartonella* sp. (17) were detected in 80 Libyan jirds (*Meriones libycus*) from China. These findings extend the known host and geographic ranges of these pathogens, with neither *A. bovis* nor *B. krasnovii* previously confirmed in Libyan jirds.

The Libyan jird (*Meriones libycus*) is found in desert, semidesert, and cultivated lands in the Central Asia, Western Asia, and Northern Africa regions (Granjon 2016). This jird may carry a variety of pathogens, such as *Yersinia pestis* and *Leishmania major* (Samy et al. 2016; Yu et al. 2020), that cause human diseases. *Anaplasma* and *Bartonella* spp. are intracellular microorganisms mainly transmitted by blood-sucking arthropods. *Anaplasma bovis* is mainly found in wild ruminants (Rjeibi et al. 2018). *Bartonella krasnovii* has been reported in the midday jird (*Meriones meridianus*), Anderson's gerbil (*Gerbillus andersoni*), black rat (*Rattus rattus*), and fleas (Rao et al. 2021; de Sousa et al. 2022). We conducted a study of *Anaplasma* and *Bartonella* spp. in Libyan jirds in the Kuitun River Wetland Nature Reserve (KRWNR; elevation, 322 m; 84°20'43E, 44°32'07N) in northwestern China.

In total, 80 Libyan jirds were captured at five survey sites in KRWNR in August 2023. We used wire-mesh live traps (30 × 15 × 15 cm) that were baited with tomato, walnut, or cucumber and placed near entrances of occupied burrows (Ji et al. 2021). Traps were set before nightfall and checked twice daily; each site was trapped for one full day. Captured rodents were killed by cervical dislocation (Elangbam et al. 1990), and necropsy was performed. The livers and spleens from 80 jirds were weighed,

examined, and stored at –80 C. This study was approved by the Animal Ethics Committee of Shihezi University (approval no. A2021-053-01).

We extracted genomic DNA from a sample (~2.0 g) of livers and spleens by using a TIA-Namp genomic DNA kit (TIANGEN, Beijing, China), following the manufacturer's instructions. Molecular identification results of the cytochrome c oxidase subunit I (*COX1*) gene showed that the captured individuals had 100% similarity to Libyan jirds from Xinjiang, China (GenBank accession no. KU182937.1).

The 160 organ samples were subjected to specific PCR for the presence of *Anaplasma* by using the *16S rRNA* gene (Inokuma et al. 2001) and for *Bartonella* by using the citrate synthase A (*gltA*) gene (Rao et al. 2021). The products were inserted into the pMD-18T vector (Takara, Beijing, China) by using TA cloning to generate recombinant plasmids that were then used as templates for sequencing. Sequences were compared with reference GenBank (Song et al. 2018) sequences. Phylogenetic trees were constructed using the neighbor joining method with MEGA 7.0 software (Kumar et al. 2016).

Among the spleens from 80 Libyan jirds, one (1.25%) was positive for fragments of *A. bovis* 16S rRNA. The BLASTn analysis (National Center for Biotechnology Information 2023) showed that DNA sequences obtained shared 99.22% (639/644) identity to *A. bovis* (accession no. OK560164) detected in the greater bandicoot rat (*Bandicota indica*) in Taiwan, China (Fig. 1). In addition, *B. krasnovii* was positively detected in 3/80 (3.75%) of spleens; this shared 98.37% (363/369) identity to *B. krasnovii* from

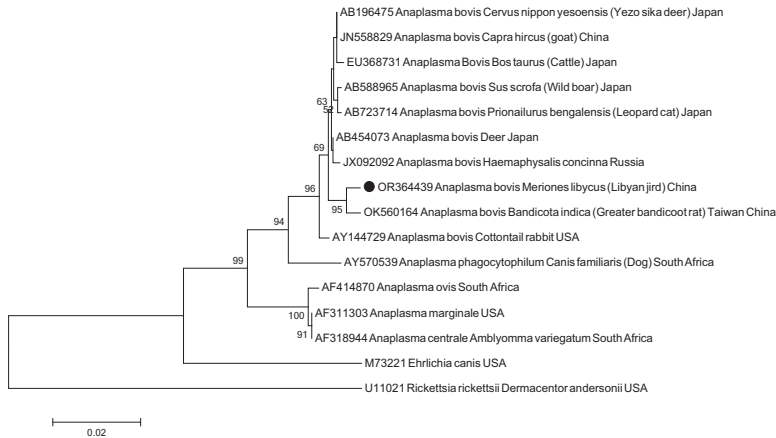


FIGURE 1. Phylogenetic tree of the 16S rRNA of *Anaplasma bovis* in Libyan jird (*Meriones libycus*) produced using MEGA 7.0 (Kumar et al. 2016). The tree was constructed with the neighbor joining method and 1,000 bootstrap replicates. Branch lengths correlate to the number of substitutions inferred according to the scale shown. The sequences OR364439 *Anaplasma bovis* *Meriones libycus* (Libyan jird) China obtained in this study is indicated by the black dot (●).

an Egyptian gerbil (*Gerbillus gerbillus*) in Israel (accession no. MH618795; Fig 2). Another *Bartonella* sp. was positively detected in 17/80 (21.25%) of the livers and corresponding spleens; this shared 99.73% (364/365) identity to *Bartonella* sp. (accession no. KT327028) found in a Libyan jird from the Republic of Georgia (Fig. 2). Voucher specimens of PCR-positive samples were retained.

Previously, *A. bovis* has only been detected in Muridae species, such as the striped field mouse (*Apodemus agrarius*), Greater bandicoot rat (*Bandicota indica*), Ryukyu mouse (*Mus caroli*), and rice field rat (*Rattus losea*; Masuzawa et al. 2014; Panthawong et al. 2020). Our finding of *A. bovis* in a Libyan jird from China, sharing 99.37% identity to an *A. bovis* (OK560164) found in the greater bandicoot rat in Taiwan,

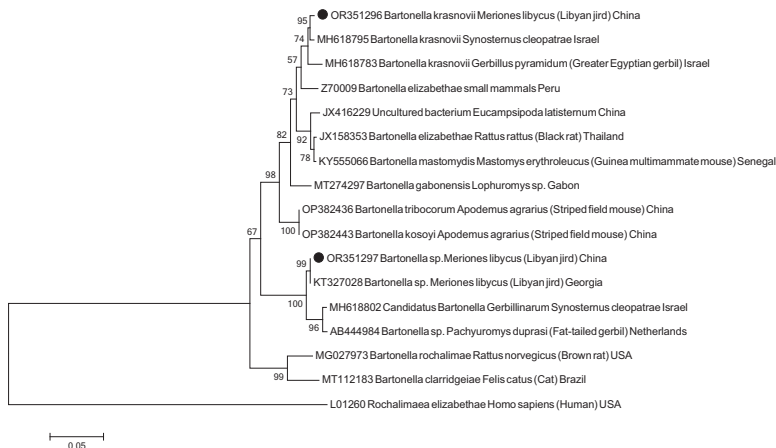


FIGURE 2. Phylogenetic tree of the *gItA* of *Bartonella krasnovii* and *Bartonella* sp. in Libyan jirds (*Meriones libycus*) constructed using MEGA 7.0 (Kumar et al. 2016). The tree was constructed with the neighbor joining method and 1,000 bootstrap replicates. Branch lengths correlate to the number of substitutions inferred according to the scale shown. The sequences OR351296 *Bartonella krasnovii* *Meriones libycus* (Libyan jird) China and OR351297 *Bartonella* sp. *Meriones libycus* (Libyan jird) China obtained in this study are indicated by the black dots (●).

China, extends the known host range and geographic range of *A. bovis*.

Bartonella krasnovii has previously been reported to circulate among gerbils (e.g., Anderson's gerbil and midday jird) and their associated fleas (de Sousa et al. 2022). The *B. krasnovii* that we found in a Libyan jird from northwestern China is highly similar to *B. elizabethae*, which is pathogenic to humans (Gutiérrez et al. 2020). The *Bartonella* sp. that we sequenced from the Libyan jird showed genetic diversity (99.73% similarity) from sequences from the Republic of Georgia in GenBank (KT327028). As with *A. bovis*, our findings extend the known host and geographic ranges of *B. krasnovii*.

We thank the Forestry and Grassland Resources Monitoring Centre of Xinjiang Production and Construction Corps, Shihezi University, for contributions. This work was supported in part by the National Key Research and Development Program (2022YFC2304004), Natural Science Foundation of China (822260399), Natural Science Key Project of Xinjiang Uygur Autonomous Region (2022B03014), Key Scientific and Technological Projects in Key Areas of XPCC (2022AB014), Technology Innovation Team for Local High-Incidence Tick-Borne Diseases (bykj2023td-2), and High-Level Talent Initiative Foundation of Shihezi University (RCZK202369).

LITERATURE CITED

- de Sousa KCM, Gutiérrez R, Yahalomi D, Shalit T, Markus B, Nachum-Biala Y, Hawlena H, Marcos-Hadad E, Hazkani-Covo E, et al. 2022. Genomic structural plasticity of rodent-associated *Bartonella* in nature. *Mol Ecol* 31:3784–3797.
- Elangbam CS, Qualls CW Jr, Lochmiller RL, Boggs JF. 1990. Strongyloidiasis in cotton rats (*Sigmodon hispidus*) from central Oklahoma. *J Wildl Dis*. 26:398–402.
- Gutiérrez R, Shalit T, Markus B, Yuan C, Nachum-Biala Y, Elad D, Harrus S. 2020. *Bartonella kosoyi* sp. nov. and *Bartonella krasnovii* sp. nov., two novel species closely related to the zoonotic *Bartonella elizabethae*, isolated from black rats and wild desert rodent-fleas. *Int J Syst Evol Microbiol* 70:1656–1665.
- Inokuma H, Terada Y, Kamio T, Raoult D, Brouqui P. 2001. Analysis of the 16S rRNA gene sequence of *Anaplasma centrale* and its phylogenetic relatedness to other Ehrlichiae. *Clin Diagn Lab Immunol* 8:241–244.
- Granjon L. 2016. *Meriones libycus* (errata version published in 2017). The IUCN Red List of Threatened Species 2016: e.T13164A115110005. <https://dx.doi.org/10.2305/IUCN.UK.2016-3.RLTS.T13164A22433926.en>. Accessed December 2023.
- Ji N, Chen X, Liu G, Zhao S, Tan W, Liu G, Zhang J, Wang Y. 2021. *Theileria*, *Hepatozoon* and *Taenia* infection in great gerbils (*Rhombomys opimus*) in northwestern China. *Int J Parasitol Parasites Wildl* 15:79–86.
- Kumar S, Stecher G, Tamura K. 2016. MEGA7: Molecular evolutionary genetics analysis version 7.0 for bigger datasets. *Mol Biol Evol* 33:1870–1874.
- Masuzawa T, Uchishima Y, Fukui T, Okamoto Y, Pan MJ, Kadosaka T, Takada N. 2014. Detection of *Anaplasma phagocytophilum* and *Anaplasma bovis* in small wild mammals from Taichung and Kinmen Island, Taiwan. *Jpn J Infect Dis* 67:111–114.
- National Center for Biotechnology Information. 2023. Basic local alignment search tool (BLAST). <http://blast.ncbi.nlm.nih.gov/Blast.cgi>. Accessed August 2023.
- Panthawong A, Grieco JP, Ngoen-Klan R, Chao CC, Chareonviriyaphap T. 2020. Detection of *Anaplasma* spp. and *Bartonella* spp. from wild-caught rodents and their ectoparasites in Nakhon Ratchasima Province, Thailand. *J Vector Ecol* 45:241–253.
- Rjeibi MR, Ayadi O, Rekik M, Gharbi M. 2018. Molecular survey and genetic characterization of *Anaplasma centrale*, *A. marginale* and *A. bovis* in cattle from Algeria. *Transbound Emerg Dis* 65:456–464.
- Rao H, Li S, Lu L, Wang R, Song X, Sun K, Shi Y, Li D, Yu J. 2021. Genetic diversity of *Bartonella* species in small mammals in the Qaidam Basin, western China. *Sci Rep* 11:1735.
- Samy AM, Annajar BB, Dokhan MR, Boussa S, Peterson AT. 2016. Coarse-resolution ecology of etiological agent, vector, and reservoirs of zoonotic cutaneous leishmaniasis in Libya. *PLoS Negl Trop Dis* 10:e0004381.
- Song R, Wang Q, Guo F, Liu X, Song S, Chen C, Tu C, Wureli H, Wang Y. 2018. Detection of *Babesia* spp., *Theileria* spp. and *Anaplasma ovis* in Border Regions, northwestern China. *Transbound Emerg Dis* 65:1537–1544.
- Yu ZM, Chen JT, Qin J, Guo JJ, Li K, Xu QY, Wang W, Lu M, Qin XC, Zhang YZ. 2020. Identification and characterization of Jingmen tick virus in rodents from Xinjiang, China. *Infect Genet Evol* 84:104411.

Submitted for publication 17 November 2023.

Accepted 10 January 2024.