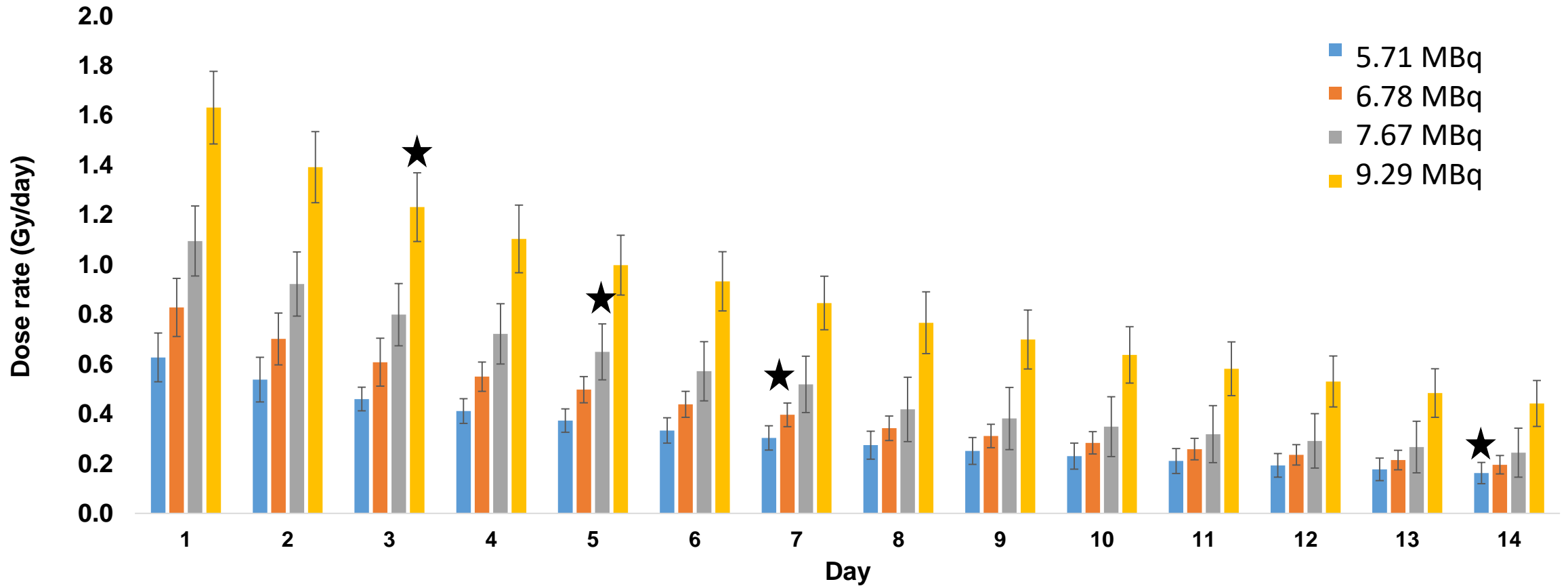
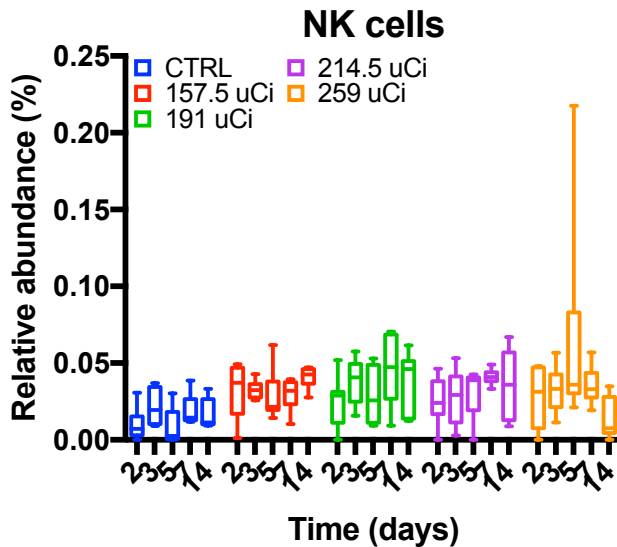
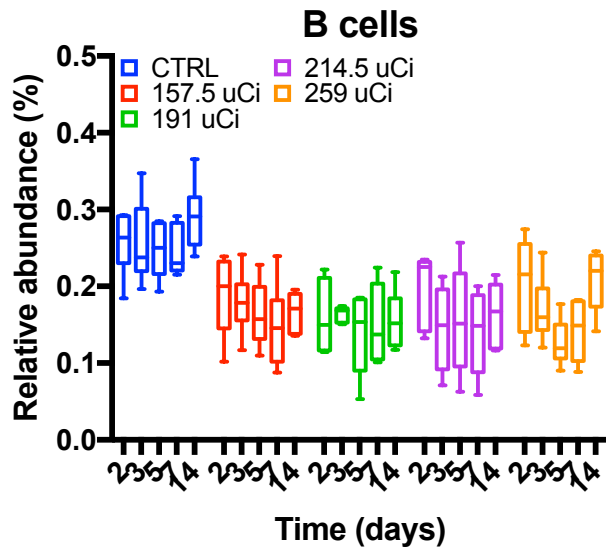
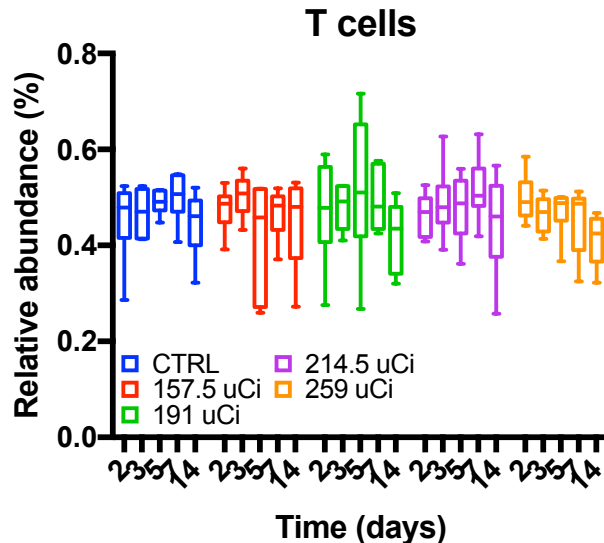
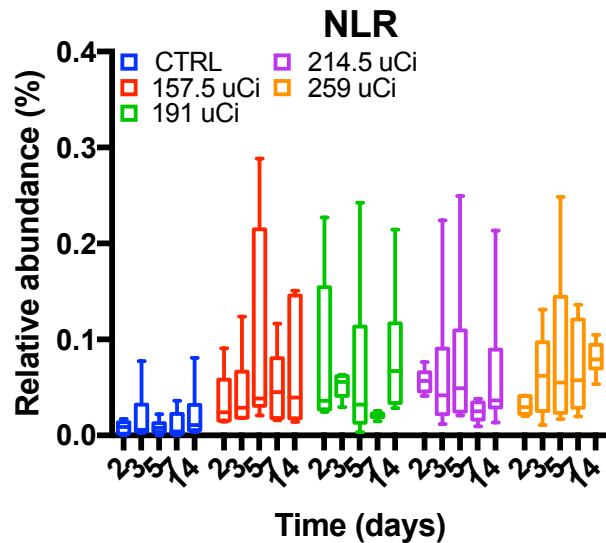


# Daily dose rates for all samples





### Statistical analysis for B cells

	Day	Mean1	Mean2	Difference	q value
CTRL vs 157.5 uCi	2	0.2567	0.1885	0.0682	0.0117
	3	0.2553	0.1790	0.0763	0.0095
	5	0.2473	0.1634	0.0838	0.0030
	7	0.2449	0.1480	0.0969	0.0030
	14	0.2910	0.1668	0.1242	0.0003

	Day	Mean1	Mean2	Difference	q value
CTRL vs 191 uCi	2	0.2567	0.1609	0.0959	0.0031
	3	0.2553	0.1643	0.0910	0.0031
	5	0.2473	0.1385	0.1088	0.0031
	7	0.2449	0.1504	0.0945	0.0036
	14	0.2910	0.1562	0.1348	0.0008

	Day	Mean1	Mean2	Difference	q value
CTRL vs 214.5 uCi	2	0.2567	0.1988	0.0579	0.0187
	3	0.2553	0.1453	0.1100	0.0035
	5	0.2473	0.1554	0.0919	0.0109
	7	0.2449	0.1386	0.1063	0.0015
	14	0.2910	0.1640	0.1270	0.0007

	Day	Mean1	Mean2	Difference	q value
CTRL vs 259 uCi	2	0.2567	0.2041	0.0527	0.0613
	3	0.2553	0.1694	0.0859	0.0086
	5	0.2473	0.1264	0.1208	0.0003
	7	0.2449	0.1427	0.1022	0.0010
	14	0.2910	0.2084	0.0827	0.0062