

EUN-HONG LIM^{1,3}, MAN-SEOK SHIN², HAE-JIN CHO¹, IN-KYU KIM¹, YONG-UN SHIN¹,
HONG-SHIK OH³ AND EUN-JAE LEE^{4,*}

**Migration and Home Range of the Grey Heron
(*Ardea cinerea*) in the Republic of Korea**

Electronic supplement to: Eun-Hong Lim, Man-Seok Shin, Hae-Jin Cho, In-Kyu Kim, Yong-Un Shin, Hong-Shik Oh and Eun-Jae Lee. 2021. Migration and Home Range of the Grey Heron (*Ardea cinerea*) in the Republic of Korea. *Waterbirds* 44: 93-97.

Appendix

Home ranges of four Grey Herons (*Ardea cinerea*) tracked in Republic of Korea during breeding season (March - September 2016), based on Minimum Convex Polygon Method (MCP) and 90%, 70%, and 50% Kernel Density Estimation (KDE).

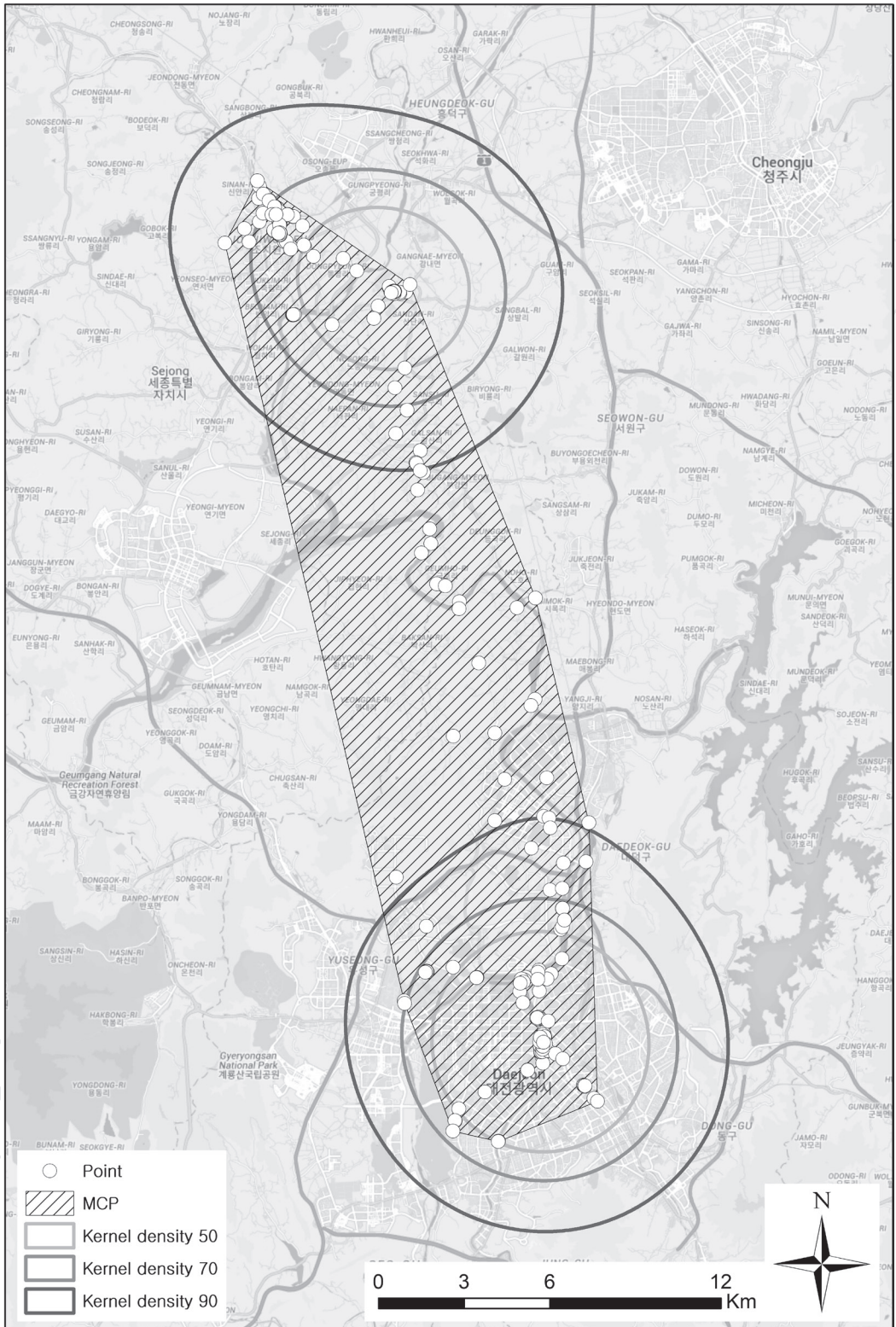


Figure A1. Grey Heron 1501 breeding home range in Republic of Korea, 15 March - 8 July 2016 (MCP = 223.7 km²; KDE: 90% = 203.3 km², 70% = 94.9 km², 50% = 51.1).

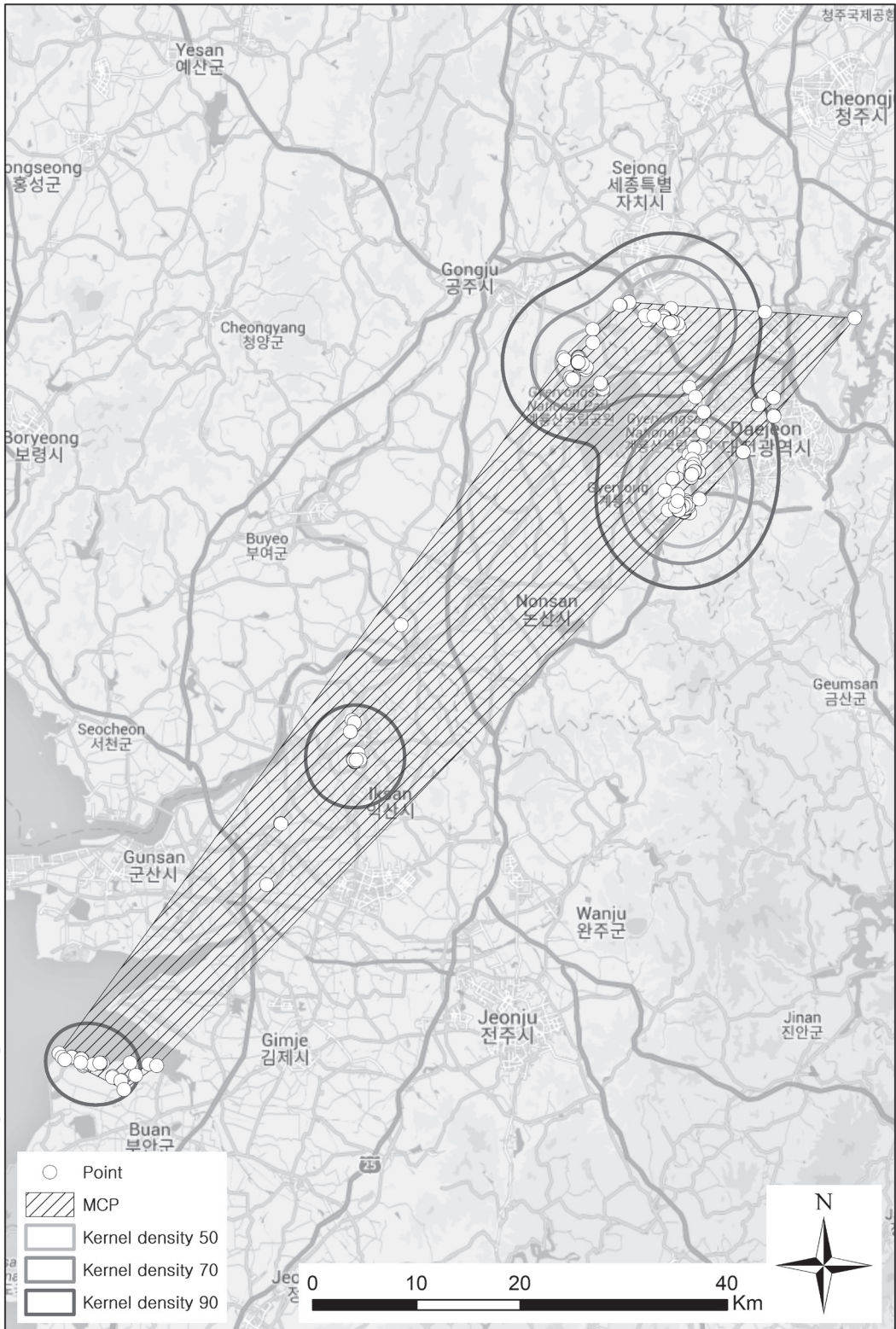


Figure A2. Grey Heron 1502 breeding home range in Republic of Korea, 15 March - 13 July 2016 (MCP = 1372.1 km²; KDE: 90% = 755.7 km², 70% = 352.2 km², 50% = 194.2).

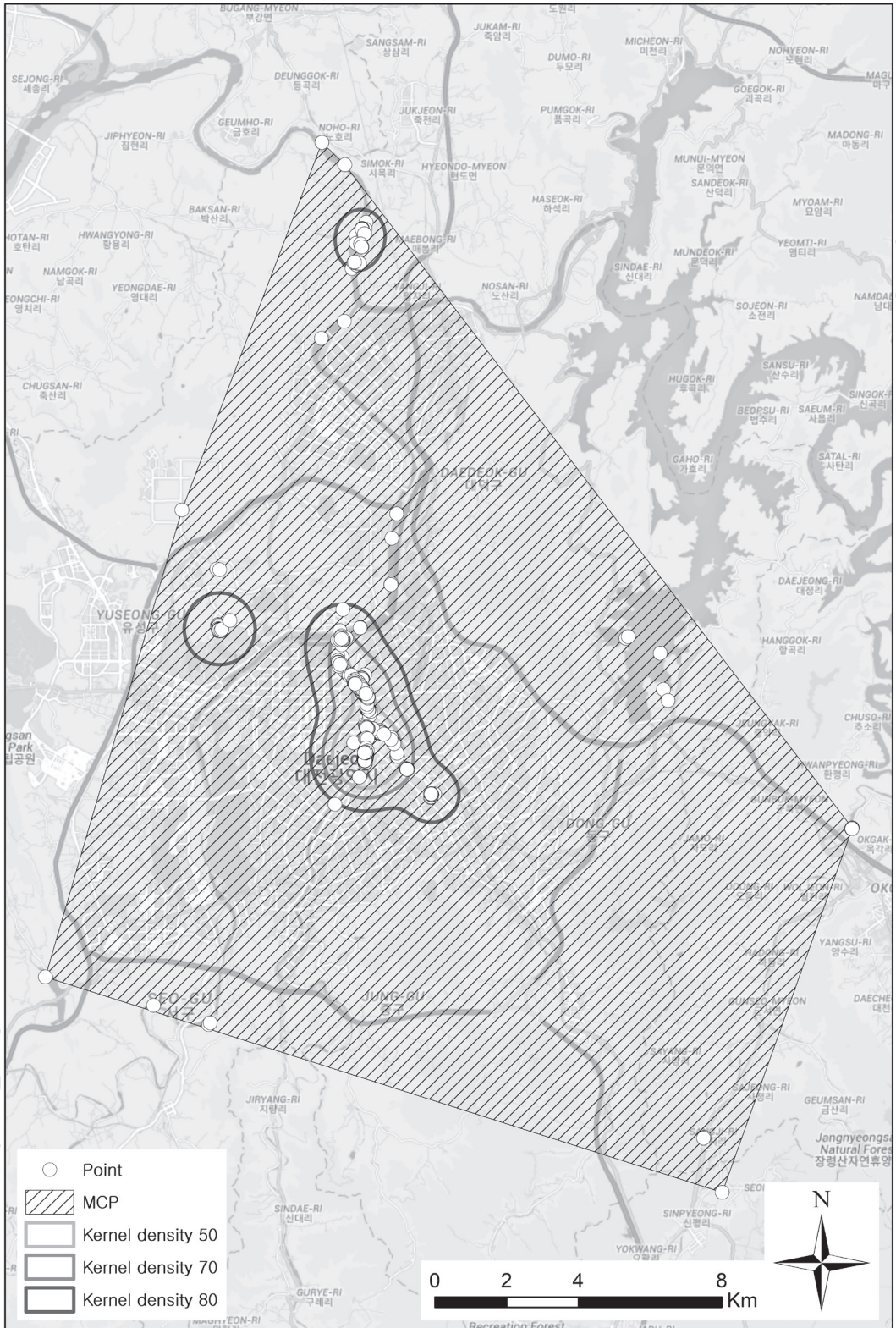


Figure A3. Grey Heron 1503 breeding home range in Republic of Korea, 25 March - 2 September 2016 (MCP = 359.0 km²; KDE: 90% = 21.3 km², 70% = 8.1 km², 50% = 3.8).

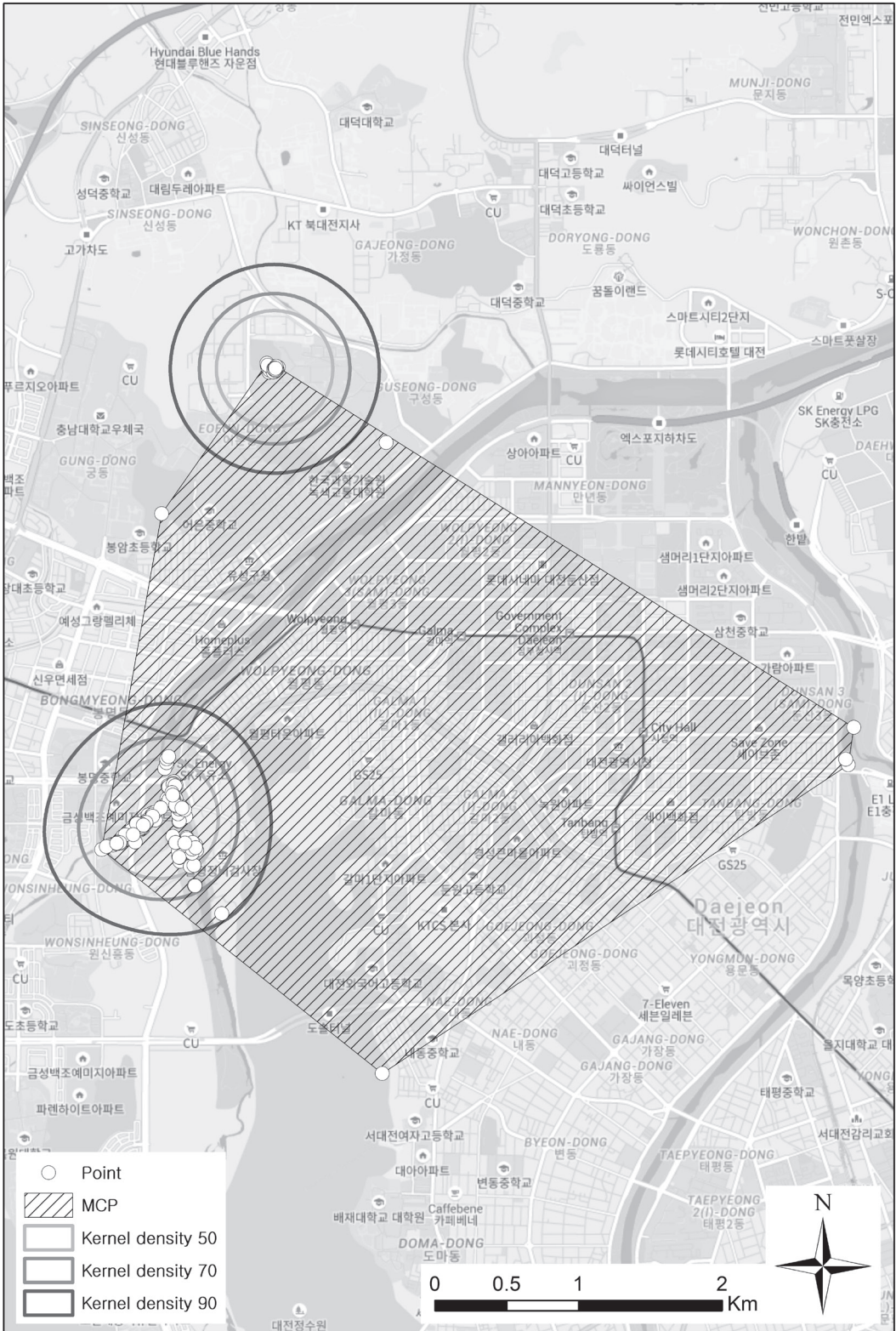


Figure A4. Grey Heron 1504 breeding home range in Republic of Korea, 25 March - 24 May 2016 (MCP = 14.3 km²; KDE: 90% = 3.7 km², 70% = 1.8 km², 50% = 1.1).