

## Willdenowia 49(3) – Electronic supplement

THOMAS RAUS, ELPIDA KARADIMOU & PANAYOTIS DIMOPOULOS

### Taxonomic and functional plant diversity of the Santorini-Christiana island group (Aegean Sea, Greece)

Electronic supplement to: Raus Th., Karadimou E. & Dimopoulos P. 2019: Taxonomic and functional plant diversity of the Santorini-Christiana island group (Aegean Sea, Greece). – Willdenowia 49: 363–381. doi: <https://doi.org/10.3372/wi.49.49308>

**Table S1.** Santorini floristic census 2018.

**Thi** = Thira; **Thr** = Thirasia; **Asp** = Aspronisi; **NK** = Nea Kameni; **PK** = Palea Kameni; **Chr** = Christiani; **Ask** = Askania. – **Life Form**: A = Aquatic; C = Chamaephyte; G = Geophyte; H = Hemicryptophyte; P = Phanerophyte; T = Therophyte. – **Chorology**: Am = American; Arab = Arabian; BA = Balkan-Anatolian; BI = Balkan-Italian; Bk = Balkan; C-As = Central Asian; Co = Cosmopolitan; Ct = Circum-temperate; EA = European-Southwest Asian; E-As = East Asian; EM = East Mediterranean; ES = Euro-Siberian; Eu = European; Gr = Greek endemic; MA = Mediterranean-Atlantic; Me = Mediterranean; MS = Mediterranean-Southwest Asian; N-Am = North American; neotrop = Neotropical; NW-Afr = Northwest African; palaeotrop = Palaeotropical; Pt = Palaeotemperate; S-Afr = South African; S-Am = South American; SS = Saharo-Sindian; ST = Subtropical-Tropical; SW-As = Southwest Asian; SW-Eu = Southwest European.

Taxon	Life form	Chorology	Thi	Thr	Asp	NK	PK	Chr	Ask
<i>Achillea maritima</i>	H	MA	+						
<i>Adiantum capillus-veneris</i>	G	ST	+			+			
<i>Adonis microcarpa</i>	T	MS						+	
<i>Aegilops biuncialis</i> subsp. <i>archipelagica</i>	T	Gr	+	+				+	
<i>Aegilops geniculata</i>	T	MS	+						
<i>Aegilops neglecta</i>	T	MS	+						
<i>Aeonium arboreum</i>	H	[NW-Afr]	+						
<i>Aetheorhiza bulbosa</i>	G	Me				+	+	+	
<i>Agave americana</i>	P	[N-Am]	+						
<i>Agrostemma githago</i> subsp. <i>githago</i>	T	EA	+						
<i>Aira cupaniana</i>	T	Me	+			+	+		
<i>Aira elegans</i>	T	MS	+	+		+	+		
<i>Ajuga iva</i>	H	Me	+						
<i>Alkanna tinctoria</i> subsp. <i>tinctoria</i>	H	Me	+	+					
<i>Allium ampeloprasum</i>	G	Me	+	+					
<i>Allium bourgeauii</i> subsp. <i>cycladicum</i>	G	EM	+						
<i>Allium commutatum</i>	G	Me						+	+
<i>Allium cupani</i> subsp. <i>hirtovaginatatum</i>	G	Me	+						
<i>Allium dentiferum</i>	G	Me	+						
<i>Allium guttatum</i> subsp. <i>tenorei</i>	G	Me	+						
<i>Allium neapolitanum</i>	G	Me	+						
<i>Allium staticiforme</i>	G	EM	+						
<i>Allium subhirsutum</i>	G	Me	+						
<i>Allium trifoliatum</i>	G	Me	+						
<i>Allosorus acrosticus</i>	G	Me	+	+		+			
<i>Allosorus pteridioides</i>	G	MS	+			+	+		
<i>Aloe vera</i>	P	[Arab]				+			
<i>Alopecurus myosuroides</i>	T	Co	+						
<i>Alyssum simplex</i>	T	ES	+						
<i>Alyssum umbellatum</i>	T	EM	+						
<i>Amaranthus albus</i>	T	[N-Am]	+						
<i>Amaranthus blitoides</i>	T	[N-Am]	+	+					
<i>Amaranthus caudatus</i>	T	[palaeotrop]	+						
<i>Amaranthus deflexus</i>	H	[S-Am]	+						
<i>Amaranthus graecizans</i>	T	MS	+						
<i>Amaranthus hybridus</i>	T	[N-Am]	+						
<i>Amaranthus quitensis</i>	T	[S-Am]	+						
<i>Amaranthus retroflexus</i>	T	[N-Am]	+						
<i>Amaranthus viridis</i>	T	[S-Am]	+						
<i>Ambrosia maritima</i>	T	Me	+	+					

Taxon	Life form	Chorology	T h i	T h r	A s p	N K	P K	C h r	A s k
<i>Anacamptis collina</i>	G	MS	+						
<i>Anacamptis coriophora</i>	G	MS	+						
<i>Anacamptis papilionacea</i> subsp. <i>aegaea</i>	G	BA	+						
<i>Anacamptis pyramidalis</i>	G	Eu	+						
<i>Anacamptis sancta</i>	G	EM	+	+			+		
<i>Anagallis arvensis</i>	T	Co	+	+	+		+	+	+
<i>Anagallis foemina</i>	T	EA	+						
<i>Anagyris foetida</i>	P	Me						+	+
<i>Anchusa aegyptiaca</i>	T	EM	+					+	
<i>Anchusa azurea</i>	H	Me	+						
<i>Anchusa stylosa</i> subsp. <i>spruneri</i>	T	Bk						+	
<i>Anchusa undulata</i> subsp. <i>hybrida</i>	H	Me	+	+		+			
<i>Andryala integrifolia</i>	T	Me	+	+		+	+	+	
<i>Anemone coronaria</i>	G	Me	+						
<i>Anemone pavonina</i>	G	Me	+						
<i>Anogramma leptophylla</i>	T	Co	+	+		+	+		
<i>Anthemis rigida</i> subsp. <i>rigida</i>	H	EM	+	+		+			
<i>Anthemis tomentosa</i> subsp. <i>tomentosa</i>	T	EM	+						
<i>Anthemis wernerii</i> subsp. <i>wernerii</i>	T	Gr	+				+		
<i>Anthyllis hermanniae</i>	C	Me	+	+				+	
<i>Anthyllis vulneraria</i> subsp. <i>rubriflora</i>	H	Me	+						
<i>Apium graveolens</i>	H	EA	+						
<i>Aptenia cordifolia</i>	C	[S-Afr]		+					
<i>Arabidopsis thaliana</i>	T	Pt	+	+					
<i>Arabis verna</i>	T	Me	+						
<i>Arenaria leptoclados</i>	T	EA	+					+	+
<i>Argyranthemum frutescens</i>	T	EA	+						
<i>Arisarum vulgare</i> subsp. <i>vulgare</i>	G	Me	+					+	+
<i>Artemisia arborescens</i>	C	Me	+	+		+	+		
<i>Arundo donax</i>	G	Co	+						
<i>Asparagus aphyllus</i> subsp. <i>orientalis</i>	C	EM	+	+		+		+	+
<i>Asparagus horridus</i>	C	Me	+	+	+	+	+	+	+
<i>Asphodelus fistulosus</i>	T	MA	+						
<i>Asphodelus ramosus</i> subsp. <i>ramosus</i>	G	Me	+	+				+	+
<i>Asplenium ceterach</i>	G	Me	+	+		+	+		
<i>Asplenium obovatum</i>	H	EA					+		
<i>Asplenium onopteris</i>	H	MA				+			
<i>Asterolinum linum-stellatum</i>	H	MA	+	+		+	+	+	
<i>Astragalus boeoticus</i>	T	Me	+	+				+	
<i>Astragalus hamosus</i>	T	Me	+	+					
<i>Astragalus pelecinus</i>	T	MS	+	+		+	+		
<i>Astragalus peregrinus</i> subsp. <i>peregrinus</i>	T	Me	+	+					
<i>Astragalus sinaicus</i>	T	Me	+						
<i>Atractylis cancellata</i>	T	EM	+	+					
<i>Atriplex halimus</i>	P	MS	+	+	+	+	+	+	+
<i>Atriplex prostrata</i>	P	MS	+			+			
<i>Atriplex recurva</i>	C	ES	+						
<i>Avellinia festucoides</i>	C	Me	+	+	+	+	+		
<i>Avena barbata</i> subsp. <i>barbata</i>	T	Me	+	+		+	+	+	
<i>Avena barbata</i> subsp. <i>wiestii</i>	T	Me			+				
<i>Avena sterilis</i>	T	Me	+			+			
<i>Ballota acetabulosa</i>	T	MS	+	+	+	+	+		
<i>Bellardia latifolia</i>	C	BA	+				+		
<i>Bellevalia hyacinthoides</i>	T	MS	+						
<i>Bellium minutum</i>	G	Bk	+	+		+	+		
<i>Beta vulgaris</i> subsp. <i>maritima</i>	T	Me	+						
<i>Bifora testiculata</i>	H	EA	+						
<i>Biscutella didyma</i> subsp. <i>apula</i>	T	MS	+	+		+	+	+	+
<i>Bituminaria bituminosa</i>	T	Me	+						
<i>Blackstonia perfoliata</i> subsp. <i>perfoliata</i>	H	MA	+						
<i>Brachypodium distachyon</i>	T	MA	+	+	+	+	+	+	+
<i>Brassica cretica</i> subsp. <i>aegaea</i>	T	MS	+			+			

Taxon	Life form	Chorology	T h i	T h r	A s p	N K	P K	C h r	A s k
<i>Brassica rapa</i> subsp. <i>campestris</i>	C	EM	+						
<i>Brassica tournefortii</i>	T	Eu	+	+		+		+	
<i>Briza maxima</i>	T	Me	+	+		+			
<i>Bromus diandrus</i>	T	ST	+	+	+				
<i>Bromus fasciculatus</i>	T	Me	+	+		+	+	+	+
<i>Bromus hordeaceus</i> subsp. <i>mediterraneus</i>	T	Me	+						
<i>Bromus intermedius</i>	T	Me	+	+		+	+	+	+
<i>Bromus madritensis</i> subsp. <i>haussknechtii</i>	T	Me	+		+	+			
<i>Bromus madritensis</i> subsp. <i>madritensis</i>	T	Me	+	+		+	+		+
<i>Bromus rigidus</i>	T	MS	+	+		+	+		
<i>Bromus rubens</i>	T	ST	+		+	+	+	+	+
<i>Bromus squarrosus</i>	T	MS	+						
<i>Bromus sterilis</i>	T	Pt		+		+	+		
<i>Bromus tectorum</i>	T	MS	+	+	+	+	+		
<i>Bryonia cretica</i>	T	Pt	+						
<i>Buglossoides arvensis</i> subsp. <i>arvensis</i>	G	EM	+						
<i>Buglossoides arvensis</i> subsp. <i>sibthorpiana</i>	T	Me	+	+					
<i>Bunias erucago</i>	T	EA	+						
<i>Bupleurum semicompositum</i>	T	Me	+				+	+	
<i>Bupleurum trichopodium</i>	T	MS	+						
<i>Cakile maritima</i> subsp. <i>maritima</i>	T	Me	+	+		+	+		
<i>Calendula arvensis</i>	T	MA	+	+		+	+		
<i>Calendula bicolor</i>	T	MA	+						
<i>Calicotome villosa</i>	P	Me	+	+			+		
<i>Campanula erinus</i>	T	MA	+			+	+		
<i>Cannabis sativa</i>	T	[C-As]	+						
<i>Capparis orientalis</i>	C	Me	+	+					+
<i>Capparis zoharyi</i>	C	Me	+						
<i>Capsella bursa-pastoris</i>	T	Co	+	+					
<i>Carduus pycnocephalus</i>	H	MA	+	+		+	+		
<i>Carlina corymbosa</i> subsp. <i>graeca</i>	H	BA	+	+		+	+	+	+
<i>Carpobrotus edulis</i>	C	[S-Afr]	+						
<i>Carthamus lanatus</i> subsp. <i>baeticus</i>	T	Me	+	+		+	+	+	
<i>Carthamus leucocaulos</i>	T	Gr	+	+					
<i>Catapodium balearicum</i>	T	Me					+		
<i>Catapodium marinum</i>	T	MA	+	+			+	+	
<i>Catapodium rigidum</i>	T	Me	+	+			+	+	
<i>Centaurea benedicta</i>	T	Me	+						
<i>Centaurea raphanina</i> subsp. <i>mixta</i>	H	Gr	+	+	+				+
<i>Centaureum pulchellum</i>	T	EA	+					+	
<i>Centaureum tenuiflorum</i> subsp. <i>tenuiflorum</i>	T	MA	+				+		
<i>Centranthus calcitrapae</i>	T	Me				+			
<i>Centranthus ruber</i>	H	Me	+						
<i>Cerastium comatum</i>	T	EM	+	+		+	+		
<i>Cerastium glomeratum</i>	T	Co	+						
<i>Cerastium glutinosum</i>	T	EA	+	+					
<i>Cerastium semidecandrum</i>	T	EA	+			+	+		
<i>Ceratonia siliqua</i>	P	Me	+						
<i>Chenopodiastrum murale</i>	T	EA	+	+		+		+	
<i>Chenopodium album</i>	T	Co	+						
<i>Chenopodium opulifolium</i>	T	EA	+	+					
<i>Chenopodium vulvaria</i>	T	EA	+						
<i>Chondrilla juncea</i>	H	MA	+	+		+			
<i>Chondrilla ramosissima</i>	H	Gr	+						
<i>Chrozophora obliqua</i>	T	MS	+	+					
<i>Chrozophora tinctoria</i>	T	MS	+						
<i>Cicer arietinum</i>	T	[SW-As]	+						
<i>Cichorium intybus</i>	H	EA	+						
<i>Cichorium spinosum</i>	C	Me	+						
<i>Cistus creticus</i> subsp. <i>creticus</i>	C	Me	+	+				+	
<i>Cistus salviifolius</i>	C	Me	+					+	
<i>Clypeola jonthlaspi</i> subsp. <i>microcarpa</i>	T	MS	+	+		+	+	+	

Taxon	Life form	Chorology	T h i	T h r	A s p	N K	P K	C h r	A s k
<i>Colchicum cupanii</i>	G	Me	+					+	
<i>Consolida ajacis</i>	T	Me	+						
<i>Convolvulus althaeoides</i>	H	Me	+					+	
<i>Convolvulus arvensis</i>	H	Co	+	+					
<i>Convolvulus dorycnium</i>	C	Me	+	+					
<i>Convolvulus elegantissimus</i>	H	Me	+						
<i>Convolvulus oleifolius</i>	C	Me	+					+	+
<i>Convolvulus siculus</i>	T	Me	+						
<i>Coronilla scorpioides</i>	T	MA	+						
<i>Corynephorus articulatus</i>	T	Me	+	+		+	+	+	+
<i>Cosentinia vellea</i>	G	MS	+	+		+	+		
<i>Cotula coronopifolia</i>	T	[S-Afr]						+	
<i>Crassula alata</i>	T	EM	+	+		+	+		
<i>Crassula tillaea</i>	T	MA				+			
<i>Crepis foetida</i>	H	MA	+	+		+	+		
<i>Crepis multiflora</i>	T	EM	+	+	+	+	+	+	+
<i>Crepis neglecta</i> subsp. <i>graeca</i>	T	Gr	+					+	+
<i>Crepis sancta</i>	T	EA	+						
<i>Crithmum maritimum</i>	C	MA					+	+	+
<i>Crocus cartwrightianus</i>	G	Gr	+						
<i>Crocus laevigatus</i>	G	Gr	+						
<i>Crocus tournefortii</i>	G	Gr	+						
<i>Crucianella latifolia</i>	T	MA	+						
<i>Crupina crupinastrum</i>	T	EA	+	+				+	
<i>Cupressus sempervirens</i>	P	EM	+						
<i>Cuscuta brevistyla</i>	T	ST	+						
<i>Cuscuta palaestina</i> subsp. <i>palaestina</i>	T	Me	+			+	+	+	+
<i>Cymbalaria muralis</i>	H	[SW-Eu]	+						
<i>Cymodocea nodosa</i>	A	MA					+		
<i>Cynanchum acutum</i> subsp. <i>acutum</i>	P	ST	+						
<i>Cynara cornigera</i>	H	EM						+	+
<i>Cynodon dactylon</i>	G	Co	+	+					
<i>Cynosurus echinatus</i>	T	Me	+	+					
<i>Cyperus rotundus</i>	G	Co	+						
<i>Cytinus ruber</i>	G	Me	+						
<i>Dactylis glomerata</i> subsp. <i>hackelii</i>	H	MA	+				+		
<i>Dactylis glomerata</i> subsp. <i>hispanica</i>	H	Me	+	+			+	+	+
<i>Dasypyrum villosum</i>	T	MS	+						
<i>Datura innoxia</i>	T	[Am]					+		
<i>Daucus carota</i> subsp. <i>maximus</i>	T	Me	+						
<i>Daucus guttatus</i> subsp. <i>guttatus</i>	T	Me	+	+					
<i>Daucus involucratus</i>	T	EM	+			+			
<i>Dianthus diffusus</i>	H	BA	+						
<i>Didesmus aegyptius</i>	T	EM	+	+				+	
<i>Dittrichia graveolens</i>	T	Me	+	+		+			
<i>Dittrichia viscosa</i>	C	Me	+	+		+			
<i>Draba boerhaavii</i>	T	EA	+						
<i>Draba macrocarpa</i>	T	EM	+						
<i>Draba praecox</i>	T	EA	+				+		
<i>Draba verna</i>	T	EA	+						
<i>Drimia numidica</i>	G	Me	+	+			+	+	+
<i>Ecballium elaterium</i>	G	Me	+						
<i>Echinops spinosissimus</i> subsp. <i>spinosissimus</i>	H	Me	+	+		+	+	+	+
<i>Echium angustifolium</i> subsp. <i>angustifolium</i>	H	EM	+	+	+	+			
<i>Echium arenarium</i>	H	Me	+	+	+	+	+	+	
<i>Echium parviflorum</i>	T	MS	+	+					
<i>Echium plantagineum</i>	T	MA	+	+					
<i>Elytrigia bessarabica</i>	G	Eu	+						
<i>Elytrigia juncea</i>	G	Me	+	+					
<i>Emex spinosa</i>	T	Me	+	+				+	
<i>Ephedra foeminea</i>	P	Me	+	+		+	+	+	+
<i>Equisetum ramosissimum</i>	G	Ct	+						

Taxon	Life form	Chorology	T h i	T h r	A s p	N K	P K	C h r	A s k
<i>Erica arborea</i>	P	Me	+						
<i>Erica manipuliflora</i>	C	Me	+						
<i>Erigeron bonariensis</i>	H	[neotrop]	+	+		+			
<i>Erigeron canadensis</i>	H	N-Am				+			
<i>Erodium botrys</i>	T	Me	+						
<i>Erodium chium</i>	T	Me	+				+		+
<i>Erodium ciconium</i>	T	EA	+						
<i>Erodium cicutarium</i>	T	Ct	+	+		+	+	+	
<i>Erodium gruinum</i>	T	EM	+						
<i>Erodium laciniatum</i>	T	Me	+	+				+	
<i>Erodium malacoides</i>	T	MS	+	+		+	+		
<i>Erodium moschatum</i>	T	EA				+			
<i>Eruca vesicaria</i>	T	MS	+	+					
<i>Eryngium amorginum</i>	H	Gr							+
<i>Eryngium maritimum</i>	G	MA	+	+					
<i>Erysimum senoneri</i> subsp. <i>senoneri</i>	C	Gr	+	+			+		
<i>Euphorbia acanthothamnos</i>	C	EM	+						
<i>Euphorbia chamaesyce</i>	T	MA	+						
<i>Euphorbia dendroides</i>	P	Me	+					+	+
<i>Euphorbia paralias</i>	H	MA	+	+					
<i>Euphorbia peplis</i>	T	MA	+	+			+		
<i>Euphorbia pepulus</i>	T	Co	+	+	+	+	+	+	
<i>Euphorbia terracina</i>	H	Me	+	+					
<i>Fagonia cretica</i>	C	Me							+
<i>Fallopia convolvulus</i>	T	Ct	+						
<i>Ferula communis</i> subsp. <i>glauca</i>	H	Me	+	+	+				
<i>Festuca arundinacea</i>	H	Pt	+						
<i>Ficus carica</i>	P	MS	+	+		+	+		
<i>Filago aegaea</i> subsp. <i>aegaea</i>	T	Gr	+			+		+	
<i>Filago aegaea</i> subsp. <i>aristata</i>	T	EM	+						
<i>Filago contracta</i>	T	EM	+			+	+		
<i>Filago cretensis</i> subsp. <i>cretensis</i>	T	Gr	+			+	+		
<i>Filago cretensis</i> subsp. <i>cycladum</i>	T	Gr				+	+	+	
<i>Filago eriocephala</i>	T	Me	+			+	+	+	
<i>Filago gallica</i>	T	MA	+	+	+	+	+	+	
<i>Filago minima</i>	T	Eu				+			
<i>Filago pygmaea</i>	T	Me	+						
<i>Filago pyramidata</i>	T	Me	+			+	+	+	
<i>Filago vulgaris</i>	T	Pt	+				+		
<i>Foeniculum vulgare</i>	H	Me	+	+					
<i>Frankenia hirsuta</i>	C	MS	+	+		+			
<i>Fumana arabica</i>	C	Me	+						
<i>Fumana thymifolia</i>	C	Me	+					+	
<i>Fumaria bastardii</i>	T	MA					+		
<i>Fumaria capreolata</i>	T	MA	+						
<i>Fumaria densiflora</i>	T	MA	+						
<i>Fumaria judaica</i> subsp. <i>judaica</i>	T	EM	+	+		+	+	+	+
<i>Fumaria parviflora</i>	T	EA	+						
<i>Fumaria petteri</i>	T	MA	+						
<i>Gagea graeca</i>	G	BA	+			+		+	
<i>Galactites tomentosus</i>	T	Me	+						
<i>Galium aparine</i>	T	EA	+	+		+	+		
<i>Galium caminianum</i>	T	EM	+			+	+		+
<i>Galium murale</i>	T	Me	+		+	+	+	+	
<i>Galium spurium</i>	T	Ct	+			+	+	+	+
<i>Galium tricornutum</i>	T	EA	+						
<i>Galium verrucosum</i>	T	Me	+						
<i>Gastridium phleoides</i>	T	Me	+						
<i>Geranium molle</i>	T	Pt	+	+	+	+	+	+	+
<i>Geranium purpureum</i>	T	Me	+				+		
<i>Geranium rotundifolium</i>	T	Pt	+	+		+	+		
<i>Glaucium flavum</i>	H	MA	+	+			+		

Taxon	Life form	Chorology	T h i	T h r	A s p	N K	P K	C h r	A s k
<i>Glebionis coronaria</i>	T	Me	+	+		+	+	+	
<i>Glebionis segetum</i>	T	Me	+	+					
<i>Gomphocarpus fruticosus</i>	P	[S-Afr]	+						
<i>Halimione portulacoides</i>	C	MA	+						
<i>Hedypnois rhagadioloides</i>	T	Me	+	+	+	+	+	+	
<i>Helianthemum aegyptiacum</i>	T	Me	+						
<i>Helianthemum salicifolium</i>	T	EA	+					+	+
<i>Helichrysum italicum</i> subsp. <i>italicum</i>	C	Me	+	+		+	+	+	+
<i>Helichrysum stoechas</i> subsp. <i>barrelieri</i>	C	Me	+	+		+		+	+
<i>Heliotropium dolosum</i>	T	EA	+	+				+	+
<i>Heliotropium europaeum</i>	T	MA	+						
<i>Heliotropium suaveolens</i>	T	MA	+	+		+			
<i>Heliotropium supinum</i>	T	MS	+						
<i>Herniaria hirsuta</i> subsp. <i>cinerea</i>	T	MS	+	+				+	
<i>Herniaria hirsuta</i> subsp. <i>hirsuta</i>	T	Pt	+	+					
<i>Himantoglossum robertianum</i>	G	Me	+						
<i>Hippocrepis ciliata</i>	T	Me	+				+	+	+
<i>Hirschfeldia incana</i>	T	EA	+	+		+		+	
<i>Holcus annuus</i> subsp. <i>setiglumis</i>	T	Me	+			+			
<i>Hordeum bulbosum</i>	H	ST	+						
<i>Hordeum murinum</i> subsp. <i>leporinum</i>	T	Me	+	+	+	+	+	+	
<i>Hordeum vulgare</i> subsp. <i>spontaneum</i>	T	MS	+						
<i>Hymenocarpus circinnatus</i>	T	Me	+						
<i>Hyoscyamus albus</i>	T	Me	+	+					
<i>Hyoseris scabra</i>	T	Me	+	+			+		
<i>Hyparrhenia hirta</i>	H	ST	+	+		+	+	+	
<i>Hypocoum procumbens</i> subsp. <i>procumbens</i>	T	Me	+	+					
<i>Hypericum triquetrifolium</i>	G	MS	+						
<i>Hypochaeris achyrophorus</i>	T	Me	+	+		+	+	+	+
<i>Hypochaeris glabra</i>	T	Me	+	+	+	+	+		
<i>Iris albicans</i>	G	[Arab]	+	+					
<i>Iris attica</i>	G	BA	+						
<i>Iris germanica</i>	G	EA	+						
<i>Juncus heldreichianus</i>	H	EM	+	+					
<i>Juncus maritimus</i>	G	MA	+						
<i>Juncus subulatus</i>	H	Me	+						
<i>Juniperus turbinata</i>	P	MA	+						
<i>Kickxia elatine</i> subsp. <i>crinita</i>	T	Me	+						
<i>Lactuca serriola</i>	H	Pt	+						
<i>Lactuca tuberosa</i>	H	EA	+						
<i>Lagoecia cuminoides</i>	T	MA	+						
<i>Lagurus ovatus</i>	T	Me	+	+	+	+	+	+	+
<i>Lamarckia aurea</i>	T	MS	+			+	+		
<i>Lamium amplexicaule</i>	T	Pt	+	+		+			
<i>Lathyrus annuus</i>	T	MS	+						
<i>Lathyrus aphaca</i>	T	MS	+	+		+			
<i>Lathyrus articulatus</i>	T	Me	+						
<i>Lathyrus cicera</i>	T	MS	+	+		+			
<i>Lathyrus clymenum</i>	T	Me	+			+			
<i>Lathyrus ochrus</i>	T	Me	+	+					
<i>Lathyrus sativus</i>	T	[Me-SW-As]	+						
<i>Lathyrus saxatilis</i>	T	Me	+						
<i>Lathyrus setifolius</i>	T	Me	+						
<i>Lathyrus sphaericus</i>	T	EA	+	+				+	
<i>Legousia hybrida</i>	T	EA	+						
<i>Leontodon tuberosus</i>	H	Me	+	+		+			
<i>Lepidium coronopus</i>	T	Pt	+						
<i>Lepidium draba</i> subsp. <i>draba</i>	G	Co	+						
<i>Lilium candidum</i>	G	EM	+						
<i>Limonium aegaeum</i>	C	Gr	+	+					
<i>Limonium archeothirae</i>	C	Gr	+		+				
<i>Limonium narbonense</i>	H	MS		+					

Taxon	Life form	Chorology	T h i	T h r	A s p	N K	P K	C h r	A s k
<i>Limonium proliferum</i>	C	Gr	+						
<i>Limonium sinuatum</i>	H	Me	+						
<i>Limonium thirae</i>	C	Gr	+	+			+	+	+
<i>Limonium virgatum</i>	C	Me	+	+					
<i>Linaria chalepensis</i>	T	MA	+						
<i>Linaria parviflora</i>	T	MS	+	+					
<i>Linaria pelisseriana</i>	T	MS		+		+	+	+	
<i>Linaria simplex</i>	T	MS				+	+	+	+
<i>Linum bienne</i>	T	Me	+						
<i>Linum strictum</i> subsp. <i>spicatum</i>	T	Me	+	+				+	+
<i>Lobularia libyca</i>	T	SS	+				+		
<i>Lolium multiflorum</i>	T	MS	+						
<i>Lolium perenne</i>	H	ES	+	+				+	
<i>Lolium rigidum</i> subsp. <i>lepturoides</i>	T	Me	+			+	+		
<i>Lolium rigidum</i> subsp. <i>rigidum</i>	T	ST	+	+		+	+		
<i>Lolium subulatum</i>	T	Me	+						
<i>Lolium temulentum</i>	T	Co	+						
<i>Lonicera etrusca</i>	P	Me	+						
<i>Lotus cytisoides</i>	H	Me	+	+	+		+	+	+
<i>Lotus edulis</i>	T	Me	+	+	+		+	+	+
<i>Lotus halophilus</i>	T	Me	+		+		+	+	
<i>Lotus ornithopodioides</i>	T	Me	+						
<i>Lotus peregrinus</i>	T	EM	+	+			+	+	+
<i>Lupinus angustifolius</i>	T	Me	+	+	+	+	+		
<i>Lupinus pilosus</i>	T	EM	+						
<i>Lycium schweinfurthii</i>	P	Me	+	+	+		+	+	+
<i>Malcolmia chia</i>	T	EM	+	+		+	+	+	
<i>Malcolmia flexuosa</i> subsp. <i>flexuosa</i>	T	EM	+	+			+	+	+
<i>Malephora purpureocrocea</i>	P	[S-Afr]	+						
<i>Malva arborea</i>	P	Me	+	+					
<i>Malva multiflora</i>	T	Me	+			+			
<i>Malva parviflora</i>	T	MS	+	+	+	+	+	+	
<i>Malva sylvestris</i>	T	EA	+	+					
<i>Mandragora officinarum</i>	H	Me	+						
<i>Marrubium vulgare</i>	H	EA	+	+					
<i>Matricaria chamomilla</i>	T	Co	+	+					
<i>Matthiola incana</i> subsp. <i>incana</i>	H	MA		+				+	+
<i>Matthiola sinuata</i>	H	MA	+	+		+	+	+	
<i>Medicago arborea</i>	P	Me	+						
<i>Medicago coronata</i>	T	MS	+					+	
<i>Medicago disciformis</i>	T	Me	+	+				+	
<i>Medicago littoralis</i>	T	MS	+	+		+	+		
<i>Medicago marina</i>	C	MA	+						
<i>Medicago minima</i>	C	Pt	+						
<i>Medicago monspeliaca</i>	T	MS	+	+			+	+	
<i>Medicago orbicularis</i>	T	MS	+						
<i>Medicago polymorpha</i>	T	Pt	+						
<i>Medicago praecox</i>	T	Me	+				+		
<i>Medicago rugosa</i>	T	Me	+						
<i>Medicago sativa</i> subsp. <i>sativa</i>	H	EA	+						
<i>Medicago truncatula</i>	T	MS	+					+	+
<i>Melica minuta</i>	H	Me	+				+		
<i>Melilotus albus</i>	T	EA	+						
<i>Melilotus indicus</i>	T	EA	+			+			
<i>Melilotus neapolitanus</i>	T	EA	+						+
<i>Melilotus sulcatus</i>	T	Me	+	+			+		
<i>Mentha longifolia</i> subsp. <i>typhoides</i>	H	EM	+						
<i>Mercurialis annua</i>	T	Pt	+	+		+	+	+	
<i>Mesembryanthemum crystallinum</i>	T	Me	+						
<i>Mesembryanthemum nodiflorum</i>	T	Me	+	+	+		+	+	+
<i>Micromeria graeca</i>	C	Me	+						
<i>Micromeria juliana</i>	C	Me	+						

Taxon	Life form	Chorology	T h i	T h r	A s p	N K	P K	C h r	A s k
<i>Micromeria nervosa</i>	C	Me	+	+					
<i>Misopates orontium</i>	T	MA	+	+		+	+	+	
<i>Moraea sisyrinchium</i>	G	Me	+						
<i>Morus alba</i>	P	[E-As]	+						
<i>Muscari commutatum</i>	G	BI	+						
<i>Muscari comosum</i>	G	MA	+						
<i>Muscari cycladicum</i> subsp. <i>cycladicum</i>	G	Gr	+						
<i>Muscari weissii</i>	G	EM	+					+	
<i>Myosotis arvensis</i>	T	ES	+						
<i>Myosotis incrassata</i>	T	MA	+			+	+		
<i>Myosotis ramosissima</i> subsp. <i>ramosissima</i>	T	EA	+				+		
<i>Narcissus obsoletus</i>	G	Me	+						
<i>Narcissus tazetta</i> subsp. <i>tazetta</i>	G	MS	+						
<i>Neotinea maculata</i>	G	Me	+						
<i>Nerium oleander</i> subsp. <i>oleander</i>	G	Me	+	+					
<i>Nicotiana glauca</i>	P	Me	+	+				+	
<i>Nigella degenii</i> subsp. <i>degenii</i>	T	Gr	+	+			+		
<i>Nigella doerfleri</i>	T	Gr	+						
<i>Nonea echioides</i>	T	Me	+						
<i>Olea europaea</i> subsp. <i>europaea</i>	P	Me	+						
<i>Onobrychis aequidentata</i>	T	Me	+						
<i>Onobrychis caput-galli</i>	T	Me	+	+					
<i>Ononis diffusa</i>	T	Me	+	+		+	+		
<i>Ononis ornithopodioides</i>	T	Me	+						
<i>Ononis pubescens</i>	T	Me	+					+	
<i>Ononis reclinata</i>	T	MA	+	+	+		+	+	+
<i>Onopordon tauricum</i>	H	Me	+	+		+			
<i>Onopordum caulescens</i>	H	MA	+	+					
<i>Ophioglossum lusitanicum</i>	G	MA				+	+		
<i>Ophrys xbrigittae</i>	G	Me	+						
<i>Ophrys ferrum-equinum</i> subsp. <i>ferrum-equinum</i>	G	BA	+						
<i>Ophrys fusca</i> subsp. <i>iricolor</i>	G	Me	+						
<i>Ophrys lutea</i> subsp. <i>galilaea</i>	G	Me	+						
<i>Ophrys omegaifera</i> subsp. <i>israelitica</i>	G	EM	+						
<i>Ophrys omegaifera</i> subsp. <i>omegaifera</i>	G	EM	+						
<i>Ophrys scolopax</i> subsp. <i>scolopax</i>	G	MA	+						
<i>Ophrys tenthredinifera</i>	G	Me	+						
<i>Ophrys umbilicata</i> subsp. <i>umbilicata</i>	G	Me	+						
<i>Opuntia ficus-indica</i>	P	[neotrop.]	+	+					
<i>Orchis anatolica</i>	G	EM	+						
<i>Orchis anthropophora</i>	G	MA	+						
<i>Origanum onites</i>	C	Me	+						
<i>Ornithogalum arabicum</i>	G	Me	+						
<i>Ornithogalum creticum</i>	G	Gr	+						
<i>Ornithopus compressus</i>	T	Me	+	+		+	+		
<i>Ornithopus pinnatus</i>	T	Me	+			+	+		
<i>Orobanche alba</i>	T	EA	+						
<i>Orobanche crenata</i>	T	MA	+						
<i>Orobanche minor</i>	T	EA	+						
<i>Orobanche pubescens</i>	T	Me	+	+		+	+	+	
<i>Oxalis corniculata</i>	H	Pt	+						
<i>Oxalis pes-caprae</i>	G	[S-Afr]	+			+			
<i>Pallenis spinosa</i> subsp. <i>spinosa</i>	H	Me	+					+	
<i>Pancreatum maritimum</i>	G	Me	+	+					
<i>Papaver apulum</i>	T	BI	+						
<i>Papaver confine</i>	T	MA	+						
<i>Papaver dubium</i>	T	EA	+					+	
<i>Papaver hybridum</i>	T	EA	+	+		+			
<i>Papaver nigrotinctum</i>	T	BA	+	+					
<i>Papaver rhoeas</i>	T	Pt	+						
<i>Papaver somniferum</i> subsp. <i>somniferum</i>	T	Me	+						
<i>Parapholis incurva</i>	T	MA	+	+				+	



Taxon	Life form	Chorology	T h i	T h r	A s p	N K	P K	C h r	A s k
<i>Parapholis marginata</i>	T	Me	+	+			+		
<i>Parietaria cretica</i>	T	MS	+	+	+	+	+	+	+
<i>Parietaria judaica</i>	T	EM	+	+		+			
<i>Parietaria lusitanica</i>	H	EA	+						
<i>Paronychia argentea</i>	T	MA	+						
<i>Paronychia echinulata</i>	H	Me				+			
<i>Paronychia macrosepala</i>	T	Me	+	+		+		+	
<i>Pelargonium graveolens</i>	H	EM	+	+					
<i>Petrorhagia dubia</i>	H	[S-Afr]	+	+			+		
<i>Phacelia tanacetifolia</i>	T	Me	+						
<i>Phagnalon rupestre</i> subsp. <i>graecum</i>	T	[N-Am]	+	+		+	+	+	+
<i>Phalaris canariensis</i>	C	Me	+	+					
<i>Phalaris minor</i>	T	MA	+						
<i>Phelipanche mutelii</i>	T	ST	+						
<i>Phelipanche purpurea</i>	T	Pt	+						
<i>Phleum exaratum</i> subsp. <i>aegaeum</i>	T	EA	+	+	+			+	
<i>Phleum subulatum</i> subsp. <i>ciliatum</i>	T	EA	+						
<i>Phragmites australis</i>	T	Me	+						
<i>Picnomon acarna</i>	G	Co	+	+					
<i>Picris pauciflora</i>	T	Pt	+						
<i>Picris rhagadioloides</i>	T	EA	+						
<i>Pimpinella cretica</i>	T	Pt	+						
<i>Pimpinella pretenderis</i>	T	EM	+						
<i>Pinus brutia</i>	H	EA	+						
<i>Piptatherum coeruleescens</i>	P	Me	+						
<i>Piptatherum miliaceum</i>	H	Me	+	+					
<i>Pistacia lentiscus</i>	C	Me	+			+	+		
<i>Pistacia terebinthus</i> subsp. <i>terebinthus</i>	P	Me	+						
<i>Plantago afra</i>	P	Me	+	+	+	+			
<i>Plantago albicans</i>	T	Me	+						
<i>Plantago bellardii</i> subsp. <i>deflexa</i>	H	Me	+	+	+			+	
<i>Plantago indica</i>	T	EM	+	+		+		+	
<i>Plantago lagopus</i>	T	MS	+	+	+	+	+	+	
<i>Plantago lanceolata</i>	T	Me	+						
<i>Plantago weldenii</i> subsp. <i>weldenii</i>	H	Co	+	+	+	+	+	+	+
<i>Plocama calabrica</i>	T	Me	+						
<i>Poa annua</i>	C	Me				+			
<i>Poa pelagis</i>	T	Co	+						
<i>Polycarpon tetraphyllum</i>	H	EM	+	+	+	+	+	+	+
<i>Polygonum aviculare</i> subsp. <i>neglectum</i>	T	MS	+						
<i>Polygonum equisetiforme</i>	T	EA	+						
<i>Polygonum maritimum</i>	C	MS	+						
<i>Polypodium cambricum</i> subsp. <i>cambricum</i>	H	MA					+		
<i>Polygogon subspathaceus</i>	G	Me					+		
<i>Portulaca oleracea</i> s.l.	T	Me	+						
<i>Posidonia oceanica</i>	T	Co	+	+	+				
<i>Prasium majus</i>	A	Me	+	+		+	+	+	+
<i>Prospero autumnale</i>	P	Me	+					+	
<i>Prunus dulcis</i>	G	Me	+						
<i>Prunus webbii</i>	P	[SW-As]	+						
<i>Pseudorhiza pumila</i>	P	EM	+	+					
<i>Psilurus incurvus</i>	H	Me	+	+	+	+	+	+	+
<i>Pteridium aquilinum</i>	T	Me	+			+			
<i>Punica granatum</i>	G	Co	+						
<i>Quercus coccifera</i>	P	[SW-As]	+						
<i>Ranunculus creticus</i>	P	Me	+						
<i>Ranunculus muricatus</i>	H	EM	+						
<i>Ranunculus neapolitanus</i>	T	MS	+						
<i>Ranunculus paludosus</i>	H	Me	+						
<i>Ranunculus sardous</i>	H	MA	+						
<i>Raphanus raphanistrum</i> subsp. <i>raphanistrum</i>	T	EA	+	+		+			
<i>Rapistrum rugosum</i>	T	EA	+	+					

Taxon	Life form	Chorology	T h i	T h r	A s p	N K	P K	C h r	A s k
<i>Reichardia picroides</i>	T	EA	+	+	+	+		+	+
<i>Reseda alba</i>	H	Me	+						
<i>Reseda lutea</i> subsp. <i>lutea</i>	T	MA	+						
<i>Reseda luteola</i>	T	Pt	+						
<i>Rhamnus lycioides</i> subsp. <i>graeca</i>	H	EA	+						
<i>Rhamnus lycioides</i> subsp. <i>oleoides</i>	P	EM	+						
<i>Roemeria hybrida</i>	P	Me	+						
<i>Romulea bulbocodium</i>	T	MS	+					+	
<i>Rosmarinus officinalis</i>	G	Me	+	+					
<i>Rostraria cristata</i>	P	Me	+	+	+	+	+	+	+
<i>Rubia tinctorum</i>	T	Co	+						
<i>Rumex acetosella</i> subsp. <i>acetoselloides</i>	H	EA	+						
<i>Rumex bucephalophorus</i> subsp. <i>aegaeus</i>	H	EA	+	+		+	+	+	
<i>Rumex bucephalophorus</i> subsp. <i>gallicus</i>	T	EM	+			+			
<i>Rumex tuberosus</i> subsp. <i>creticus</i>	T	Me	+			+			
<i>Ruppia cirrhosa</i>	G	EM					+		
<i>Ruta chalepensis</i> subsp. <i>chalepensis</i>	A	Co	+	+					
<i>Ruta graveolens</i>	C	Me	+						
<i>Sagina apetala</i>	C	MA	+	+		+	+		
<i>Sagina maritima</i>	T	EA		+		+	+		
<i>Salicornia fruticosa</i>	T	MA	+						
<i>Salsola tragus</i> subsp. <i>pontica</i>	C	MA	+	+			+		
<i>Salvia fruticosa</i>	T	MS	+						
<i>Salvia pomifera</i> subsp. <i>calycina</i>	P	EM	+						
<i>Salvia verbenaca</i>	P	EM	+						
<i>Sarcopoterium spinosum</i>	H	MA	+				+	+	+
<i>Satureja thymbra</i>	C	EM	+	+			+	+	
<i>Scaligeria napiformis</i>	C	Me	+						
<i>Scandix pecten-veneris</i>	H	EM	+						
<i>Schismus arabicus</i>	T	MS	+						
<i>Scolymus hispanicus</i>	T	MS	+	+					
<i>Scorpiurus muricatus</i>	H	EM	+					+	
<i>Scorzonera araneosa</i>	T	Me	+	+					
<i>Scorzonera cretica</i>	H	Gr	+						
<i>Scrophularia canina</i> subsp. <i>bicolor</i>	H	EM	+						
<i>Scrophularia heterophylla</i>	H	EM	+	+		+	+		
<i>Scrophularia lucida</i>	H	EM	+	+		+			
<i>Sedum amplexicaule</i> subsp. <i>tenuifolium</i>	H	Me	+	+					
<i>Sedum hispanicum</i>	C	Me	+						
<i>Sedum litoreum</i>	C	EA	+	+		+	+		+
<i>Sedum rubens</i>	T	Me	+						
<i>Sedum sediforme</i>	T	MA	+						
<i>Selaginella denticulata</i>	C	Me	+						
<i>Senecio leucanthemifolius</i>	H	Me	+	+	+	+	+	+	+
<i>Senecio vulgaris</i>	T	Me	+	+		+	+	+	
<i>Serapias bergonii</i>	T	Pt	+						
<i>Setaria adhaerens</i>	G	EM	+						
<i>Sherardia arvensis</i>	T	Ct	+	+					
<i>Sideritits lanata</i>	T	EA	+						
<i>Silene behen</i>	T	BA	+	+					
<i>Silene colorata</i>	T	Me	+	+	+	+	+	+	+
<i>Silene cretica</i>	T	Me	+						
<i>Silene cythnia</i>	T	Gr	+						
<i>Silene gallica</i>	H	ME	+	+		+	+		
<i>Silene nocturna</i>	T	MA	+	+			+		
<i>Silene pseudobehen</i>	T	Me	+						
<i>Silene sartorii</i>	H	EM	+	+					
<i>Silene sedoides</i> subsp. <i>sedoides</i>	T	Me	+	+	+	+	+		
<i>Silene vulgaris</i> subsp. <i>macrocarpa</i>	T	Me	+						
<i>Silybum marianum</i>	H	Co	+						
<i>Sinapis alba</i> subsp. <i>mairei</i>	T	Me	+						
<i>Sinapis arvensis</i> subsp. <i>arvensis</i>	T	MS	+						

Taxon	Life form	Chorology	T h i	T h r	A s p	N K	P K	C h r	A s k
<i>Sisymbrium irio</i>	T	ES	+						
<i>Sisymbrium officinale</i>	T	EA	+						
<i>Sisymbrium orientale</i>	T	EA	+	+		+			
<i>Sisymbrium polyceratium</i>	T	Me	+	+			+		
<i>Smyrniolum olusatrum</i>	H	MA	+						
<i>Solanum nigrum</i>	H	MA	+	+		+			
<i>Solanum villosum</i>	P	Co				+			
<i>Sonchus asper</i> subsp. <i>glaucescens</i>	T	EA	+			+		+	
<i>Sonchus oleraceus</i>	T	Pt	+	+		+	+	+	+
<i>Sonchus tenerrimus</i>	T	MA	+	+		+	+	+	+
<i>Sorghum halepense</i>	T	Me	+						
<i>Spergula arvensis</i>	G	[Co]				+		+	
<i>Spergularia bocconeii</i>	T	Co	+	+					
<i>Spergularia diandra</i>	T	MA						+	
<i>Spergularia salina</i>	T	EA	+			+			
<i>Stellaria apetala</i>	T	Pt	+	+		+	+		
<i>Stellaria media</i>	T	EA	+						
<i>Stipa capensis</i>	T	Co	+	+	+	+	+	+	+
<i>Suaeda maritima</i>	T	Me				+			
<i>Suaeda vera</i>	T	EA			+				+
<i>Sulla spinosissima</i>	C	MA	+	+					+
<i>Tamarix parviflora</i>	T	Me	+			+			+
<i>Taraxacum aleppicum</i>	P	MS	+						
<i>Taraxacum hellenicum</i>	H	EM	+						
<i>Taraxacum minimum</i>	H	Me	+	+			+	+	+
<i>Teesdalia coronopifolia</i>	H	Me	+						
<i>Tetragonolobus purpureus</i>	H	Me	+						
<i>Teucrium brevifolium</i>	T	Me	+					+	+
<i>Teucrium capitatum</i>	T	Me	+	+				+	+
<i>Teucrium divaricatum</i> subsp. <i>divaricatum</i>	C	Me	+					+	
<i>Thapsia garganica</i>	C	Me	+						
<i>Theligonum cynocrambe</i>	C	EM	+	+					
<i>Thesium humile</i>	H	Me	+	+				+	
<i>Thymbra capitata</i>	T	Me	+	+	+			+	+
<i>Thymelaea hirsuta</i>	T	Me	+	+	+		+	+	+
<i>Thymelaea tartonraira</i> subsp. <i>argentea</i>	C	Me	+						
<i>Tolpis umbellata</i>	P	Me	+	+		+	+		
<i>Tordylium apulum</i>	P	Me	+	+		+			
<i>Torilis leptophylla</i>	T	Me	+			+			
<i>Torilis nodosa</i>	T	Me	+	+			+		
<i>Torilis webbii</i>	T	EA					+		
<i>Tragopogon porrifolius</i> subsp. <i>eriospermus</i>	T	EA	+	+					
<i>Tribulus terrestris</i>	T	Me	+						
<i>Trifolium arvense</i>	H	Me	+			+	+		+
<i>Trifolium campestre</i>	T	Co	+	+		+	+	+	+
<i>Trifolium cherleri</i>	T	Pt	+	+				+	
<i>Trifolium dasyurum</i>	T	EA	+	+					
<i>Trifolium glomeratum</i>	T	Me	+	+		+	+		
<i>Trifolium hirtum</i>	T	EM	+	+					
<i>Trifolium infamia-ponertii</i>	T	EA	+	+		+	+	+	+
<i>Trifolium nigrescens</i>	T	Me	+				+		
<i>Trifolium praetermissum</i>	T	Me	+						
<i>Trifolium resupinatum</i>	T	Me	+				+		
<i>Trifolium scabrum</i>	T	EA	+	+	+	+	+	+	+
<i>Trifolium spumosum</i>	T	MA	+	+					
<i>Trifolium stellatum</i>	T	EA	+	+		+			
<i>Trifolium subterraneum</i>	T	Me	+			+	+		
<i>Trifolium suffocatum</i>	T	Me	+	+		+	+		
<i>Trifolium tomentosum</i>	T	MA	+	+		+	+		
<i>Trifolium uniflorum</i>	T	MA	+	+	+			+	+
<i>Trigonella corniculata</i> subsp. <i>balansae</i>	T	Me	+						
<i>Trigonella rotundifolia</i>	H	EM	+	+	+				

<b>Taxon</b>	<b>Life form</b>	<b>Chorology</b>	<b>T h i</b>	<b>T h r</b>	<b>A s p</b>	<b>N K</b>	<b>P K</b>	<b>C h r</b>	<b>A s k</b>
<i>Trigonella spicata</i>	T	EM	+						
<i>Trigonella spruneriana</i>	T	MS	+						
<i>Triplachne nitens</i>	T	EM	+	+			+		
<i>Tuberaria guttata</i>	T	EM	+	+				+	
<i>Umbilicus horizontalis</i>	T	Me	+	+		+	+	+	+
<i>Umbilicus rupestris</i>	T	MA	+	+		+	+	+	+
<i>Urospermum picroides</i>	G	Me	+	+		+	+	+	+
<i>Urtica pilulifera</i>	G	MA	+	+					
<i>Urtica urens</i>	T	Me	+	+		+			
<i>Vaccaria hispanica</i>	T	MS	+						
<i>Valantia hispida</i>	T	Co	+	+	+	+	+	+	+
<i>Valantia muralis</i>	T	Pt	+	+	+			+	
<i>Valerianella discoidea</i>	T	Me	+						
<i>Verbascum sinuatum</i>	T	Me	+	+					
<i>Veronica cymbalaria</i>	T	Me	+						
<i>Veronica hederifolia</i>	H	MS	+						
<i>Veronica praecox</i>	T	Me	+						
<i>Vicia articulata</i>	T	EA	+	+					
<i>Vicia cretica</i> subsp. <i>aegaea</i>	T	MA	+						
<i>Vicia cretica</i> subsp. <i>cretica</i>	T	Me	+			+	+	+	+
<i>Vicia cuspidata</i>	T	EM	+	+					
<i>Vicia hybrida</i>	T	EM	+						
<i>Vicia lathyroides</i>	T	EM	+	+		+	+		
<i>Vicia lutea</i>	T	MA	+						
<i>Vicia monantha</i>	T	MA	+						
<i>Vicia peregrina</i>	T	Me	+						
<i>Vicia sativa</i> subsp. <i>amphicarpa</i>	T	Me	+						
<i>Vicia sativa</i> subsp. <i>nigra</i>	T	MS	+	+		+			
<i>Vicia villosa</i> subsp. <i>dasycarpa</i>	T	Me	+	+					
<i>Vicia villosa</i> subsp. <i>eriocarpa</i>	T	Pt	+	+		+			
<i>Vicia villosa</i> subsp. <i>microphylla</i>	T	MA	+	+					+
<i>Vitex agnus-castus</i>	T	EM	+						
<i>Vulpia ciliata</i>	T	EM	+	+		+	+		
<i>Vulpia fasciculata</i>	P	MS	+			+	+		
<i>Vulpia muralis</i>	T	MS	+			+			
<i>Vulpia myuros</i>	T	Me	+						

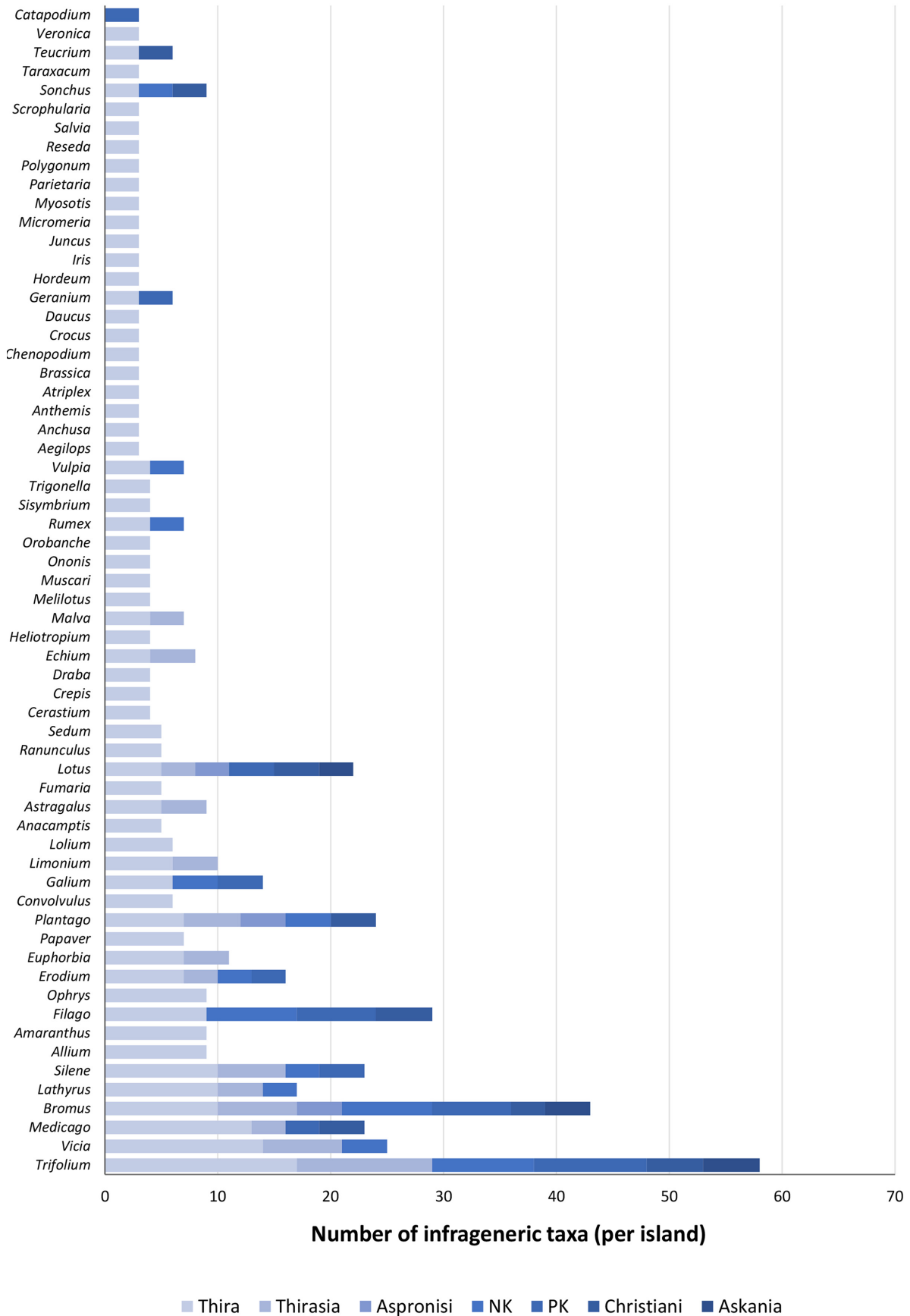
**Table S2.** Botanical exploration of the Santorini-Christiana island group after Hansen (1971), designed and executed by the present team of authors.

Island	Season and year	Sampling days	Researchers
Thira	May 1984	2	T. Raus & H. Schmalfluss
	April 1985	4	T. Raus
	September 1986	9	T. Raus
	March–April 1987	8	T. Raus
	September–October 1988	3	T. Raus & H. Schmalfluss
	May 1990	7	T. Raus & H. Sipman
	January 1992	8	T. Raus & H. Schmalfluss
Thirasia	April 2015	2	T. Raus, P. Dimopoulos & E. Karadimou
	April 1985	2	T. Raus
	September 1986	1	T. Raus
Aspronisi	May 1990	1	T. Raus & H. Sipman
	April 2018	1	T. Raus, P. Dimopoulos & E. Karadimou
Nea Kameni	May 1984	5	T. Raus
	September 1986	3	T. Raus
	April 1987	3	T. Raus
	April 1987	2	T. Raus
	May 1990	3	T. Raus & H. Sipman
	April 2000	4	P. Dimopoulos & L. Mucina
	April 2010	4	P. Dimopoulos, I. Tsiripidis & E. Karadimou
	April 2011	4	T. Raus, P. Dimopoulos, E. Bergmeier, I. Tsiripidis & E. Karadimou
	September 2011	1	E. Karadimou
	April 2012	4	P. Dimopoulos, I. Tsiripidis & E. Karadimou
	April 2015	3	T. Raus, P. Dimopoulos & E. Karadimou
	May 2015	1	E. Karadimou
Palea Kameni	April 2016	4	E. Karadimou & A. Tourtas
	May 1984	1	T. Raus
	September 1986	1	T. Raus
	April 1987	1	T. Raus
	May 1990	1	T. Raus & H. Sipman
	April 2000	2	P. Dimopoulos & L. Mucina
	April 2010	3	P. Dimopoulos, I. Tsiripidis & E. Karadimou
	April 2011	3	T. Raus, P. Dimopoulos, E. Bergmeier, I. Tsiripidis & E. Karadimou
Christiani	April 2012	3	P. Dimopoulos, I. Tsiripidis & E. Karadimou
	April 2015	2	T. Raus, P. Dimopoulos & E. Karadimou
Askania	April 2017	1	T. Raus & E. Karadimou
	April 2018	1	T. Raus & P. Dimopoulos
Askania	April 2017	1	P. Dimopoulos
	April 2018	1	E. Karadimou & A. Tourtas

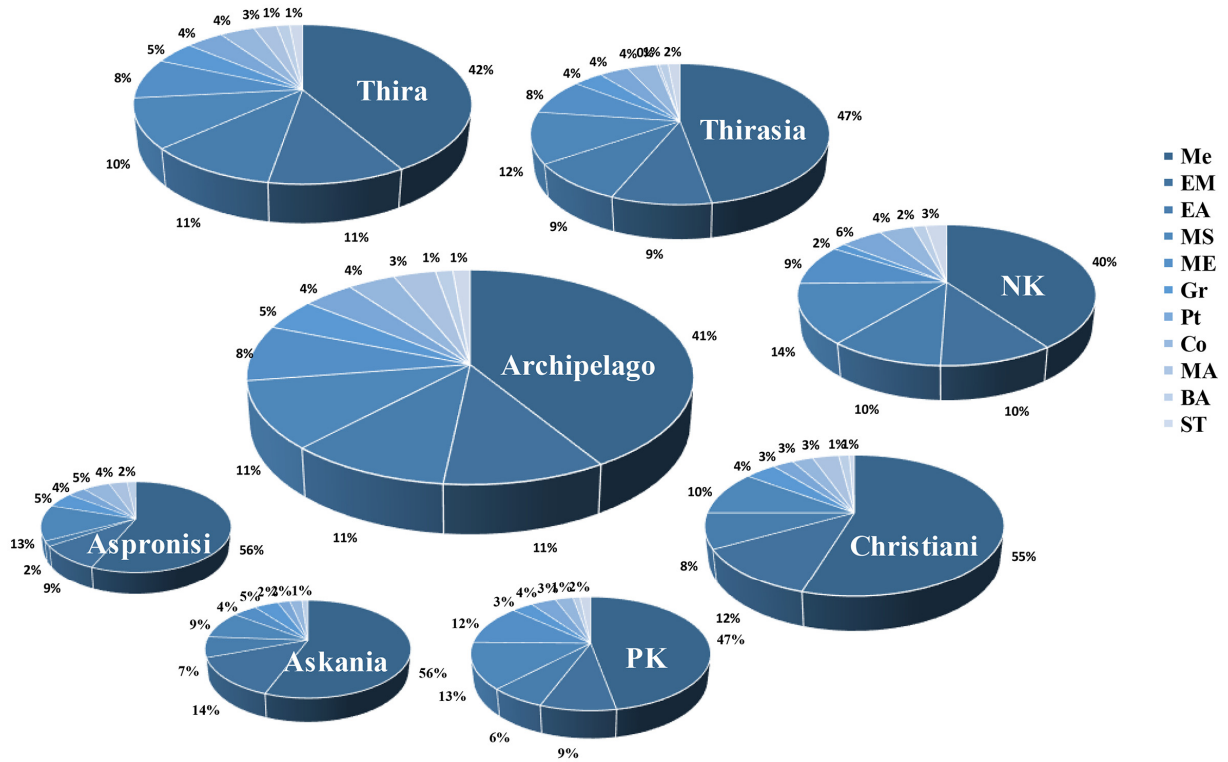
**Table S3.** The 28 functional traits analysed in this study.

**Category:** **1:** vegetative characteristics; **2:** ecological preferences (based on Ellenberg indices); **3:** regenerative characteristics. – **Sources** for information on traits: **I:** field observations; **II:** plant specimens; **III:** published botanical descriptions (Tutin & al. 1964–1980, 1993; Strid & Tan 1997, 2002; Davis 1965–1988); Pignatti 1982); **IV:** SID seed information database (Royal Botanic Gardens Kew 2019); **V:** Baseflor plant traits database (Julve 2019); **VI:** Pignatti & al. (2005); **VII:** Böhling & al. (2002); **VIII:** Dimopoulos & al. (2013, 2016). – **Habitat types** (from Dimopoulos & al. 2013): **A:** freshwater habitats (Aquatic habitats, springs and fens, reedbeds and damp tall herb vegetation, seasonally flooded depressions, damp and seepage meadows, streambanks, river and lake shores); **C:** Cliffs, rocks, walls, ravines, boulders; **G:** temperate and sub-Mediterranean Grasslands (lowland to montane dry and mesic meadows and pastures, rock outcrops and stony ground, grassy non-ruderal verges and forest edges); **H:** High mountain vegetation (subalpine and alpine grasslands, screes and rocks, scrub above the tree line); **M:** coastal habitats (Marine waters and mudflats, salt marshes, sand dunes, littoral rocks, halo-nitrophilous scrub); **P:** xeric Mediterranean Phrygana and grasslands (Mediterranean dwarf shrub formations, annual-rich pastures and lowland screes); **R:** agricultural and Ruderal habitats (fields, gardens and plantations, roadsides and trampled sites, frequently disturbed and pioneer habitats); **W:** Woodlands and scrub (broadleaved and coniferous forest, riparian and mountain forest and scrub, hedges, shady woodland margins).

Category	Functional trait	Type of variable	Classes	Sources
1	longevity	categorical	annual; perennial	III, VI
1	maximum plant height	quantitative [mm]	–	II, III
1	mean leaf length	quantitative [mm]	–	II, III
1	mean leaf width	quantitative [mm]	–	II, III
1	leaf length / width ratio	quantitative [mm]	–	calculated
1	life form	categorical	chamaephyte; geophyte; phanerophyte; therophyte; hemicryptophyte	VIII
1	growth form	categorical	biennial; bulbous; caespitose; fruticose; nanophanerophyte; parasitic; reptant; rhizomatous; rosulate; scapose; suffruticose	III, VI
1	leaf surface texture	categorical	glabrous; pubescent	II, III
1	canopy structure	categorical	no leaves; basal leaves; leafy stem; parasitic; semibasal (according to Hodgson & al. 1995)	II, III
2	Ellenberg's indicators values for soil acidity, soil nutrient content, soil humidity, continentality, soil salt content, light, temperature	ordinal	–	VII
2	habitat type	categorical	A, C, G, H, M, P, R, W	VIII
3	flowering period start	ordinal	–	I, III
3	flowering period end	ordinal	–	I, III
3	flowering period length	treated as quantitative	–	I, III
3	seed production	categorical	low (< 25 seeds per plant); medium (25–100 seeds per plant); high (> 100 seeds per plant)	I, III
3	seed weight	quantitative [g]	–	IV
3	flower size	categorical	large (>10 mm); medium (5-10 mm); small (<5 mm); inconspicuous flower ( <i>Poaceae</i> )	III
3	flower sex	categorical	unisexual; hermaphrodite	V
3	flower colour	categorical	all appearing colours	I, II, III
3	pollination type	categorical	anemogamy; autogamy; entomogamy; hydrogamy	V
3	fruit type	categorical	achene; berry; capsule; caryopsis; follicle; legume; siliqua + silicula; spore	III, V
3	dispersal mode	categorical	anemochory; autochory; zoochory; hydrochory; barochory	III, V

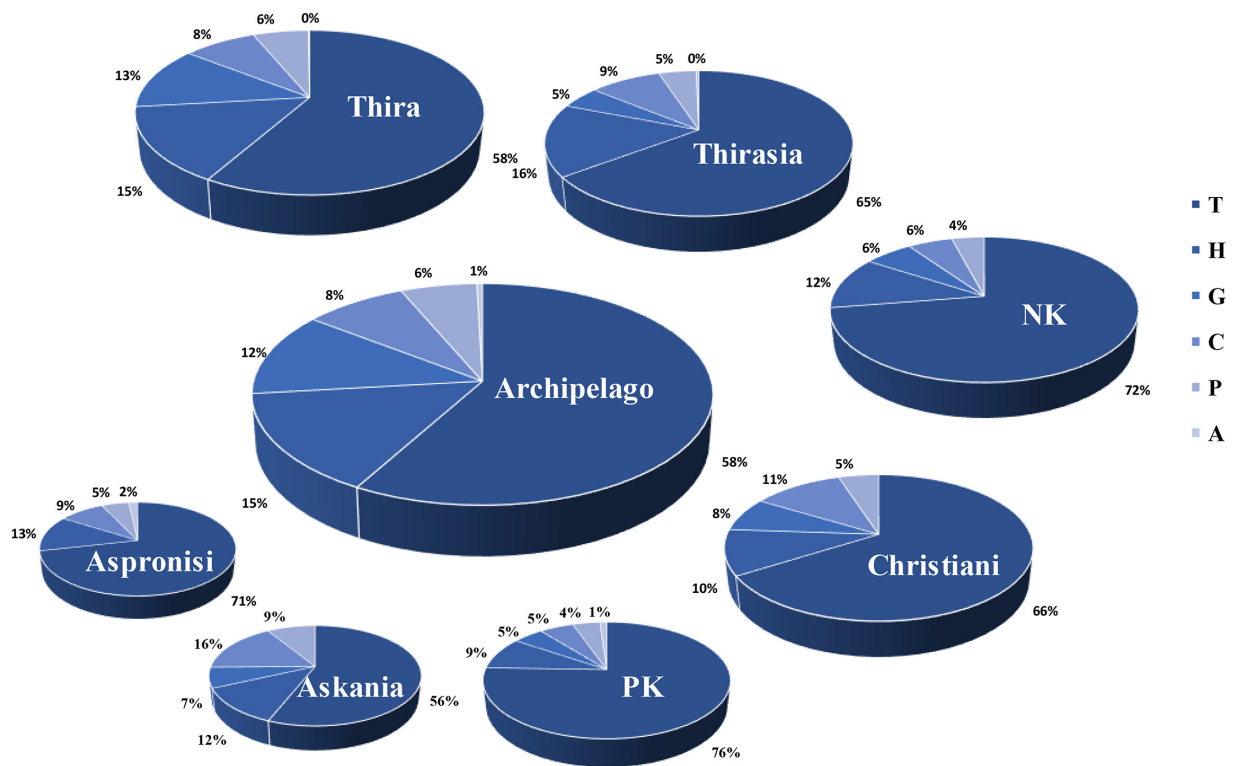


**Fig. S1.** Distribution of genera occurring with 3 or more species on the individual islands of the Santorini archipelago.

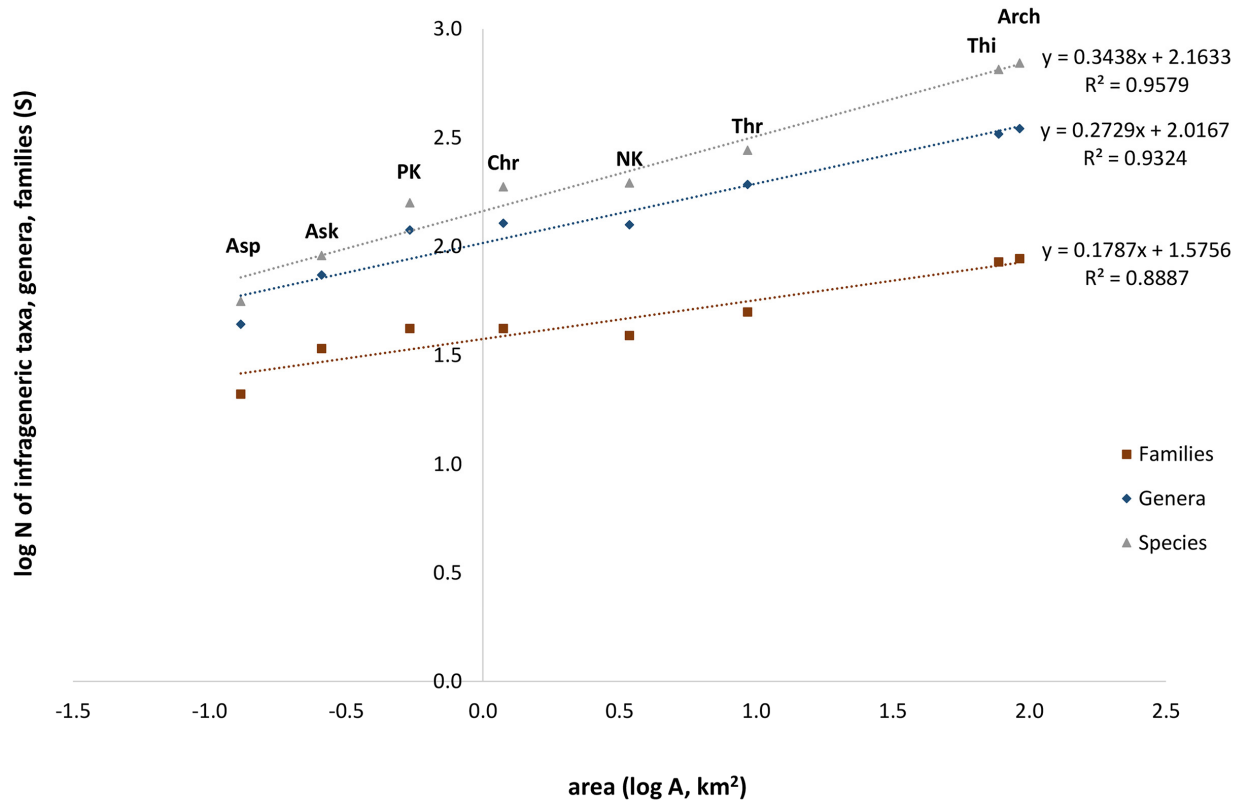


**Fig. S2.** Chorological spectra of the vascular plant taxa for the individual islands of the Santorini archipelago. – Clockwise from top: Me = Mediterranean; EM = East Mediterranean; EA = European-Southwest Asian; MS = Mediterranean-Southwest Asian; ME = Mediterranean-European; Gr = Greek endemic; Pt = Palaeotemperate; Co = Cosmopolitan; MA = Mediterranean-Atlantic; BA = Balkan-Anatolian; ST = Subtropical-Tropical. – NK = Nea Kameni; PK = Palea Kameni.

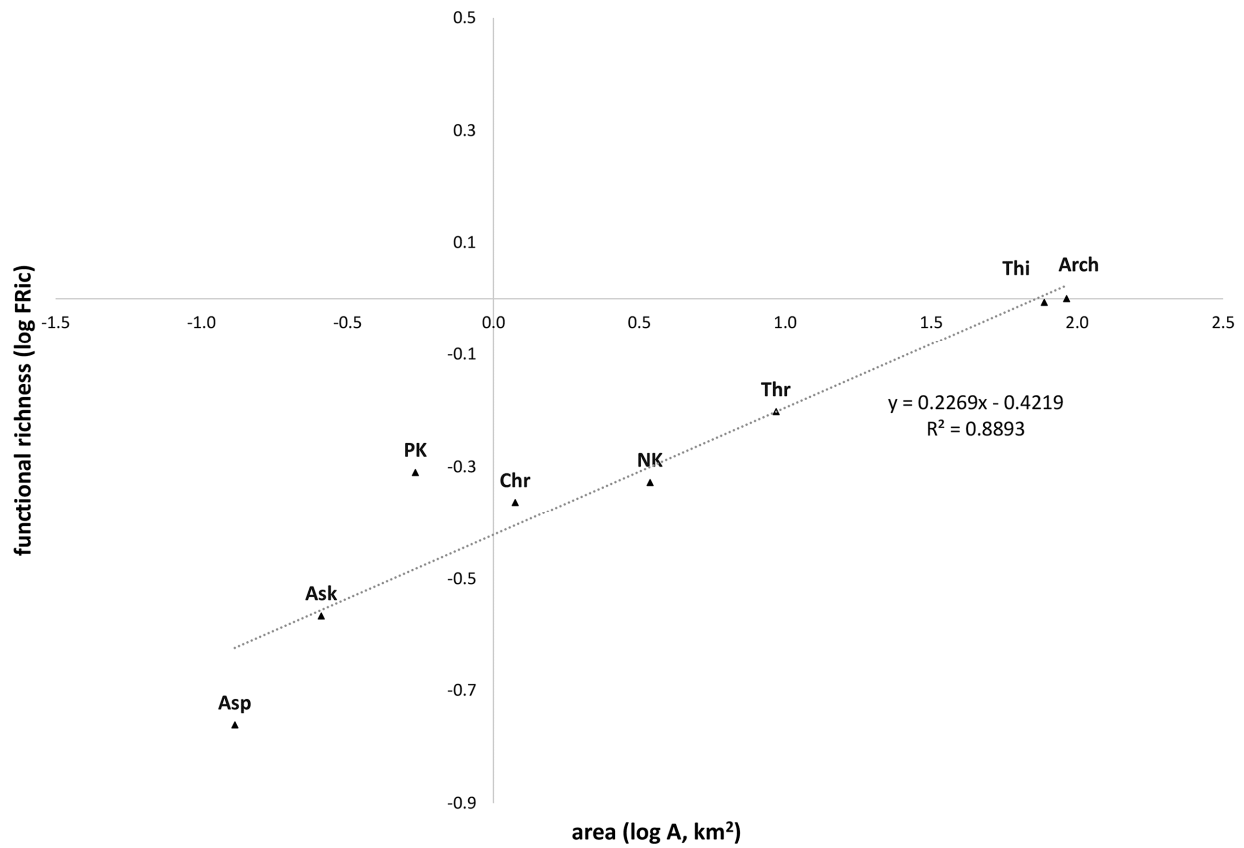




**Fig. S3.** Life-form spectra of the vascular plant taxa for the individual islands of the Santorini archipelago. – Clockwise from top: T = Therophyte; H = Hemicryptophyte; G = Geophyte; C = Chamaephyte; P = Phanerophyte; A = Aquatic. – NK = Nea Kameni; PK = Palea Kameni.



**Fig. S4.** Relationship between the three taxonomic groups (families, genera and infrageneric taxa: species + supplemental subspecies) with area for the Santorini archipelago. Equations and R-squared values for the three taxonomic groups are presented on chart ( $\log S = 0.3438 + 2.1633 \log A$ ,  $R^2 = 0.957$ , for the ISAR model). Island name abbreviations as in Fig. 3.



**Fig. S5.** Functional richness - area relationship of the Santorini archipelago. Equation and R-squared value for the IFDAR model are presented on chart ( $\log FRic = 0.226 + 0.421 \log A$ ,  $R^2 = 0.889$ ). Island name abbreviations as in Fig. 3.

## Willdenowia

Open-access online edition [bioone.org/journals/willdenowia](http://bioone.org/journals/willdenowia) 

Online ISSN 1868-6397 · Print ISSN 0511-9618 · Impact factor 1.156

Published by the Botanic Garden and Botanical Museum Berlin, Freie Universität Berlin

© 2019 The Authors · This open-access article is distributed under the CC BY 4.0 licence